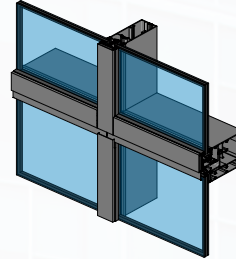


**Stick-built
Curtainwall System**

(Field Glazed)
25SD – Double Glazed
25ST – Triple Glazed



**Unitized
Curtainwall System**

(Fully Shop Glazed)
25UD – Double Glazed
25UT – Triple Glazed

ThermTek™ high performance curtainwall systems were engineered in response to the significant challenges the façade industry is facing with the increasingly stringent building energy codes. Our patent-pending solutions are versatile, thermally advanced, suitable for a wide range of façade applications, and allow for seamless transitions between systems while maintaining continuous air and water lines.

With ThermTek, higher thermal performance means more glass and more daylighting for today's buildings.

Overall System Performance

Double Glazed (1" Glass | C.O.G. 0.20)

System U-Factor 0.23
SHGC 0.32
Condensation Resistance 55

Triple Glazed (1 ¾" Glass | C.O.G. 0.11)

System U-Factor 0.14
SHGC 0.25
Condensation Resistance 70

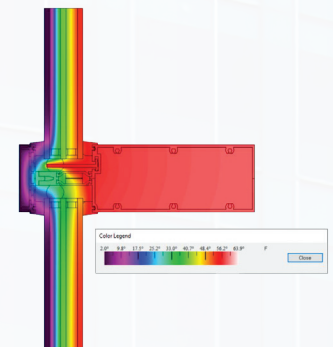
System Performance

System Profile:

3" x 9 ¾" Double Glazed
3" x 10 ½" Triple Glazed
SSG Options Available

Testing:

NFRC 100/200/500
AAMA 507
Air Performance ASTM E283 (6.24 PSF/Allowable 0.06 CFM/f²)
Static Water (15 PSF) per ASTM E331
Dynamic Water (15 PSF) per AAMA 501.1
Structural Performance per ASTM E330
Expansion Horizontal per AAMA 501.7 +¾"/-¾" Movement
Seismic Displacement per AAMA 501.4
Life Cycle Material Testing



**LEARN MORE
ABOUT THERMTEK**

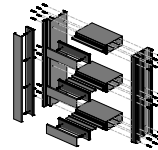


System Features

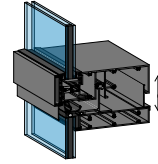
Multiple Infill Options:

- 25SD | 25UD Double Glazed 1" to 1 5/16"
- 25ST | 25UT Triple Glazed 1 3/4" x 2 1/16"

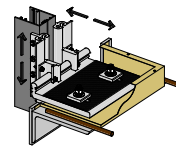
Screw Spline Concealed Fastener Assembly
Expansion Horizontal Both Stick-Built and Unitized Systems
Fully Adjustable Anchors to Structure
Captured Vertical and Horizontal Options
SSG Vertical, Horizontal and 4-Sided Options
Two Color Options (Interior and Exterior)
Custom Extrusion Cover Profiles
Window Washing Tracks
Davit Tie Backs
Sunshades
Projects Fins (Vertical and Horizontal)
Vent Window Infills
Door Infills



Screw Spline

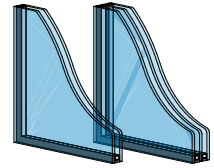


Expansion Horizontal
+3/4" / -3/4" Overall
Movement



Adjustable Anchors

Infill Options



Composite Panels
Plate Panels
Phenolic Panels
GFRC
Thin Brick
Terracotta
And More

Sustainability

ThermTek is available using low-carbon aluminum that has a minimum of 50% mixed pre- and post-consumer recycled content with the remaining primary aluminum sourced from a hydroelectric smelter.

Simple Fabrication

Stock Lengths:

- Fully Fabricated Stick
KD or shipped in semi-unitized ladders
- Fully Fabricated Unitized
KD or fully glazed unitized

Capabilities/Support

Design Assist Services
Budget/Cost Analysis
Extensive Structural Analysis
In-house NFRC Certified Thermal Analysis
Detailed Shop Drawings
Complete Submittals
Full Project Coordination
Testing and Quality Control
Comprehensive Engineering and Logistical Support
Fabrication, Assembly and Delivery

Simple Installation with Speed

Standard stick wall anchors back to structure
Custom fully adjustable slab anchors
Starter track available for both stick and unitized system options
Horizontal stack joints available for both stick and unitized system options
Fully engineered lifting lugs as required



**IBG HEADQUARTERS
& MANUFACTURING
FACILITIES**

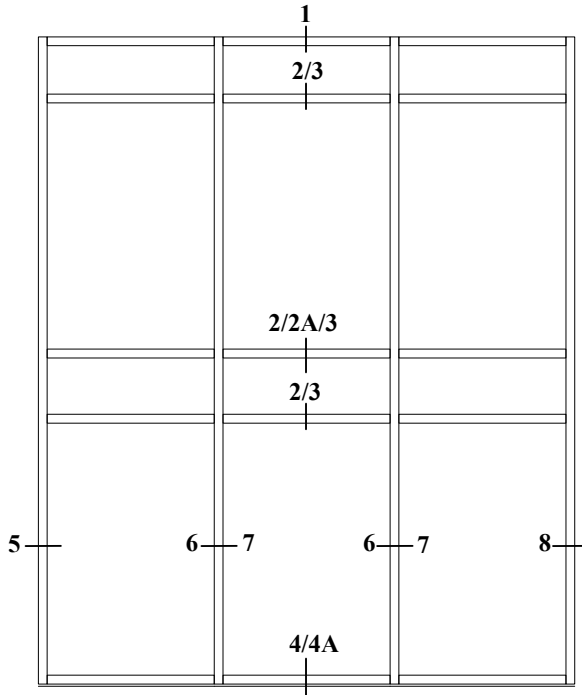
Rowley, MA

350,000 SQ/FT



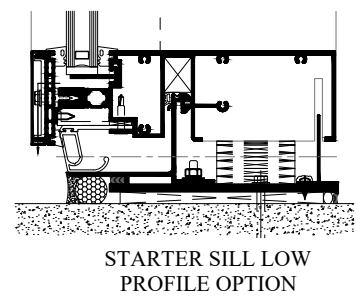
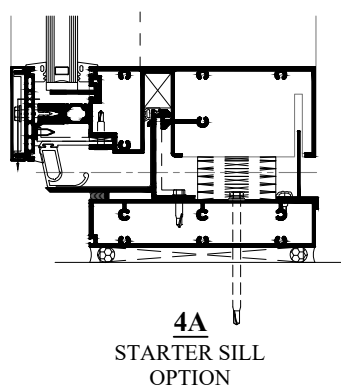
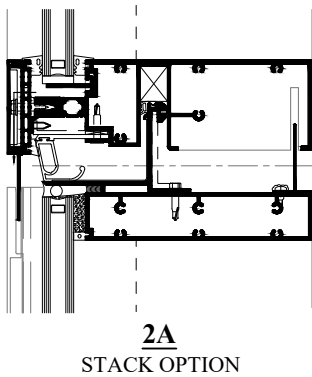
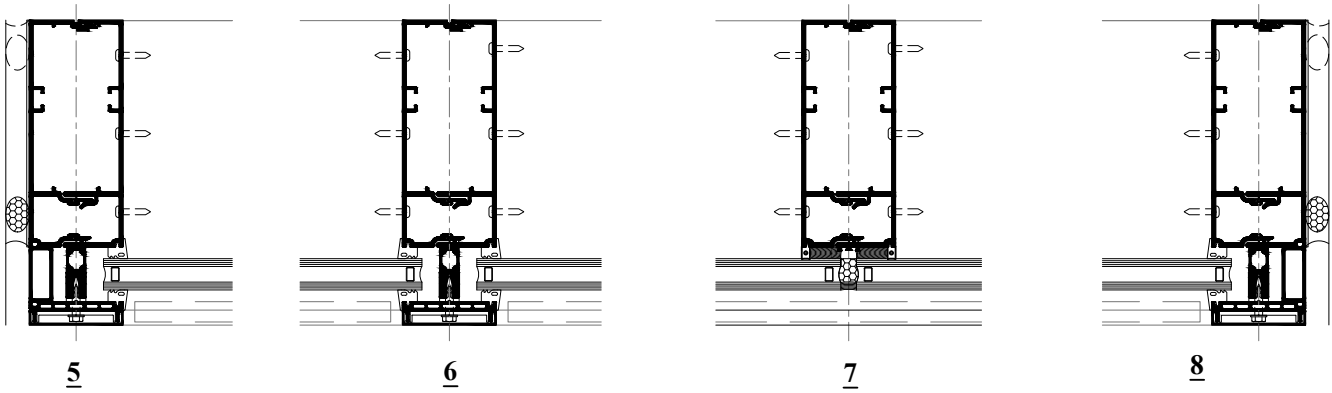
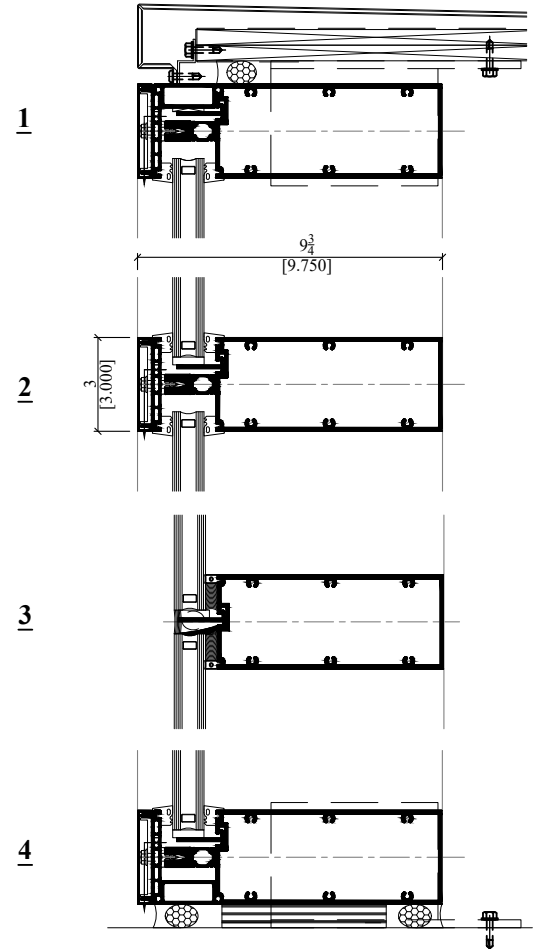
THERMTEK™ CURTAIN WALL SYSTEM (STICK)

1" INFILL DETAILS (25S-D SYSTEM)

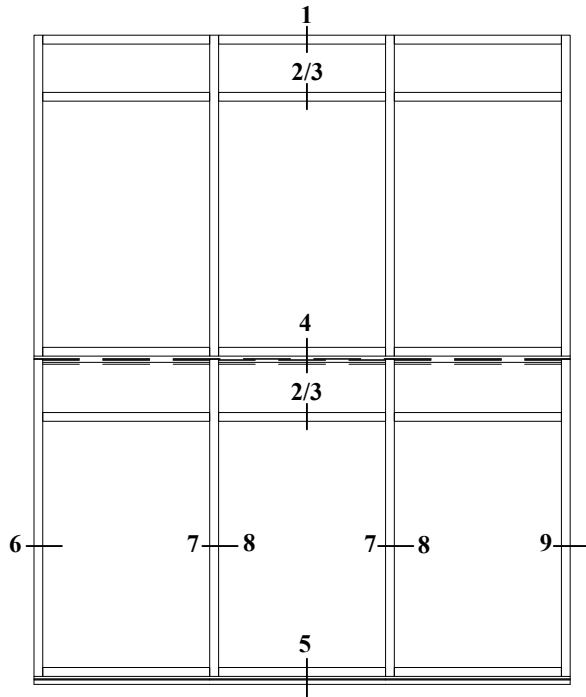


TYPICAL ELEVATION

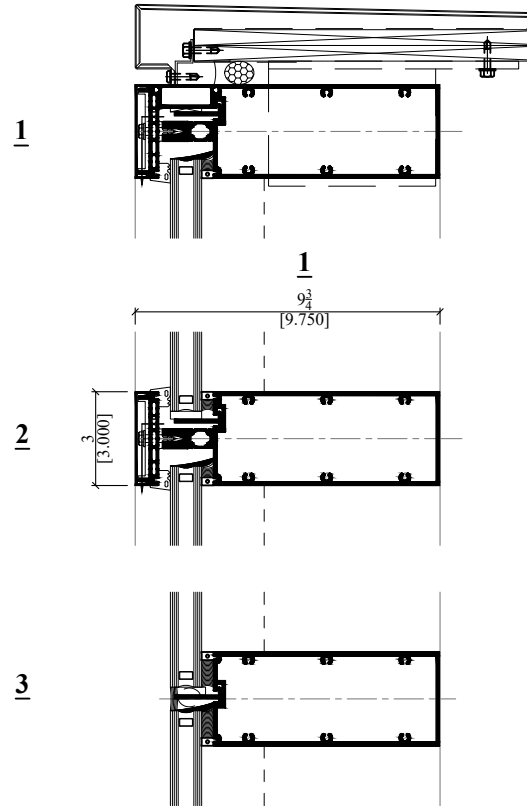
Double Glazing Shown, Triple Glazing Available



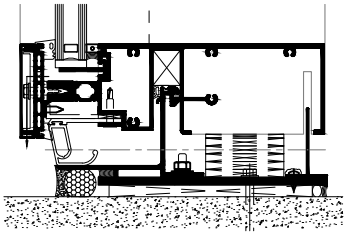
1" INFILL DETAILS (25U-D SYSTEM)



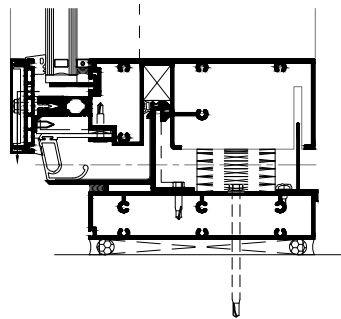
TYPICAL ELEVATION



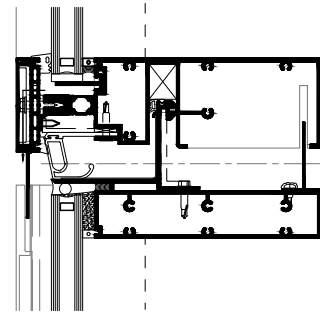
Double Glazing Shown, Triple Glazing Available



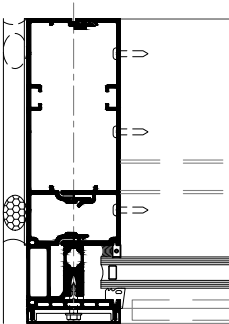
STARTER SILL LOW PROFILE OPTION



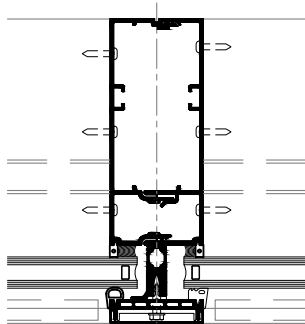
5



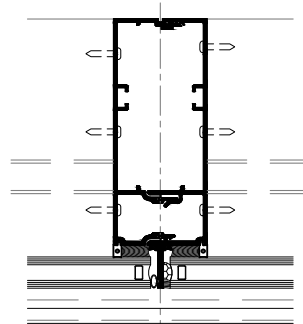
4



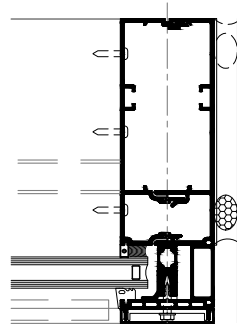
6



7



8



9