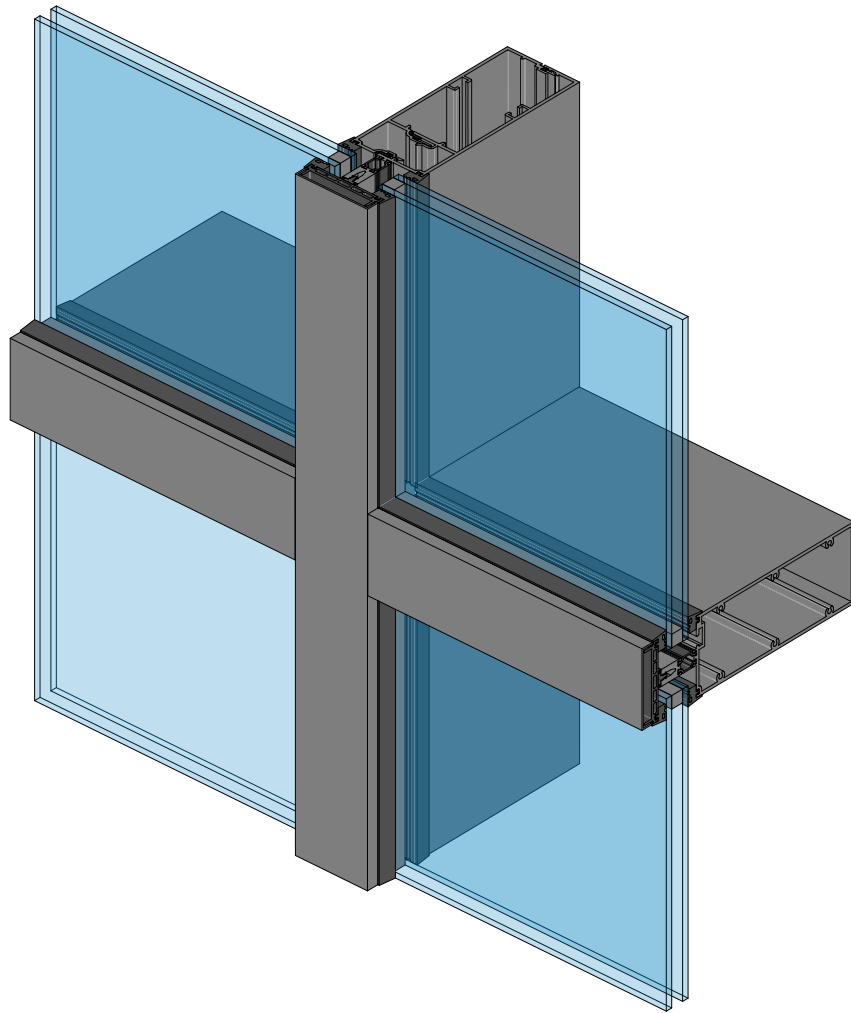


THERMTEK™

HIGH PERFORMANCE CURTAINWALL SYSTEMS



STICK BUILT CURTAINWALL SYSTEM

OCTOBER, 2025

www.THERMTEK.com

Features

Features

• System Options:

- Captured vertical and horizontal
- Vertical SSG, captured horizontal
- Vertical captured, SSG horizontal

• Standard System: (SEE ENCLOSED FOR ADDITIONAL OFFERINGS)

- Captured double glazed 3" x 9 $\frac{3}{4}$ "
- SSG double glazed 3" x 8 $\frac{5}{8}$ "
- Captured triple glazed 3" x 10 $\frac{1}{2}$ "
- SSG triple glazed 3" x 9 $\frac{3}{8}$ "

• Infill Options: (Additional custom sizes are available)

- Double glazed 1" to 1 $\frac{5}{16}$ "
- Triple glazed 1 $\frac{3}{4}$ " to 2 $\frac{1}{16}$ "

• Screw spline concealed fastener system

• Two color options in anodized or painted finishes

• System thermal performance: (4-sided captured)

Double glazed (1" glass/COG 0.19)

- System U-factor = 0.23
- SHGC = 0.32
- Condensation resistance = 55

Triple glazed (1 $\frac{3}{4}$ " glass/COG 0.10)

- System U-factor = 0.14
- SHGC = 0.25
- Condensation resistance = 70

• Supported by in house simulator thermal modeling

• Fully tested to NFRC 100/200/500 with validation (Full certification in process)

• Performance:

- Air performance (6.24 PSF/allowable 0.06 CRM/FT2) per ASTM E283
- Static water performance (15 PSF) per ASTM E331
- Dynamic water penetration (15 PSF) per AAMA 501.1
- Structural performance per ASTM E330
- Interstory horizontal displacement testing per AAMA 501.4
- Seismic displacement testing per AAMA 501.4

• Optional features:

- Custom exterior cover profiles
- Sunshades
- Vent window infills
- Door infills
- Expansion horizontal per AAMA 501.7+1"/-1" overall total allowable movement
- Vertical fins
- Window washer tie backs
- Custom adjustable anchor system to building structure

• Sustainability:

Developed with a focus on sustainable facade design, the THERMTEK™ curtainwall system is available using low-carbon aluminum, which has a minimum 50% mixed pre and post-consumer recycled content, with the remaining primary aluminum sourced from a hydroelectric smelter.

Architects - Most extrusions illustrated in this catalog are standard products for **THERMTEK™**. These concepts have been expanded and modified to afford you freedom. Some miscellaneous details are non-standard and are intended to demonstrate how the system can be modified to expand design flexibility. Please contact **THERMTEK™** for further assistance

PICTORIAL VIEWS.....3,4

1" INFILL DETAILS

 CAPTURED5

 7 ½" OPTION.....6

 SSG (VERTICAL)7

 SSG (HORIZONTAL)8

 CORNERS (CAPTURED).....9

 CORNERS (SSG).....10

 COVERS.....11

 VERTICAL ATTACHMENTS.....12

 WINDOW WASHER.....13

 DOORS.....14,15

 VENT16

1 ¾" INFILL DETAILS

 CAPTURED17

 8 ¼" OPTION.....18

 SSG (VERTICAL)19

 SSG (HORIZONTAL)20

 CORNERS (CAPTURED).....21

 CORNERS (SSG).....22

 VENT23

STANDARD ANCHORS.....24,25

ADJUSTABLE ANCHORS.....26,27

MULLION ANALYSIS.....28,29,30

THERMAL PERFORMANCE.....31-55

Laws and building and safety codes governing the design and use of glazed entrance, window, and curtain wall products vary widely. **THERMTEK™** does not control the selection of product configurations, operating hardware, or glazing materials, and assumes no responsibility therefor.

THERMTEK™ reserves the right to change configuration without prior notice when deemed necessary for product improvement.

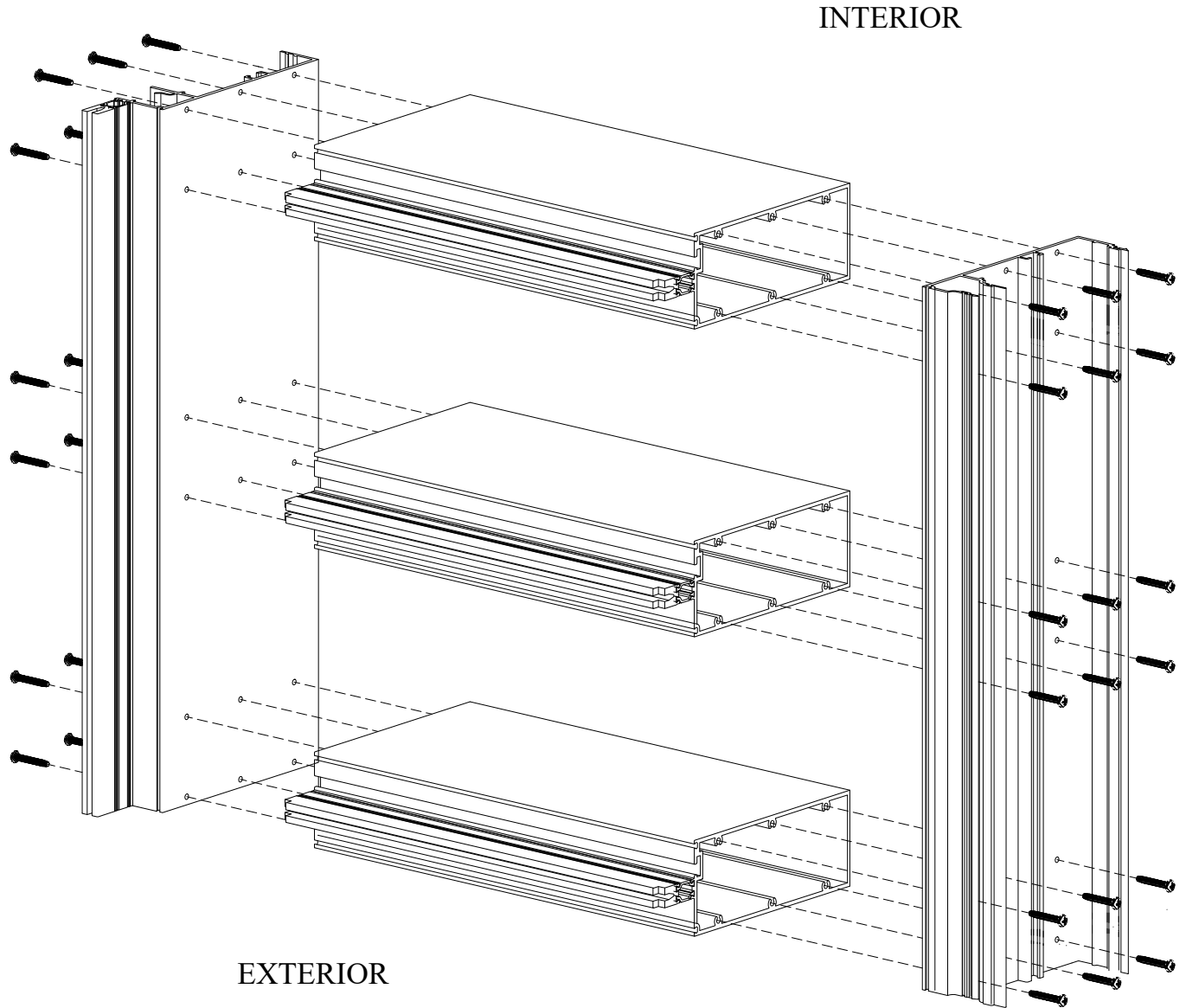
™**THERMTEK.COM**

PICTORIAL VIEW

Laws and building and safety codes governing the design and use of glazed entrance, window, and curtain wall products vary widely. THERMTEK™ does not control the selection of product configurations, operating hardware, or glazing materials, and assumes no responsibility therefor.

THERMTEK™ reserves the right to change configuration without prior notice when deemed necessary for product improvement.

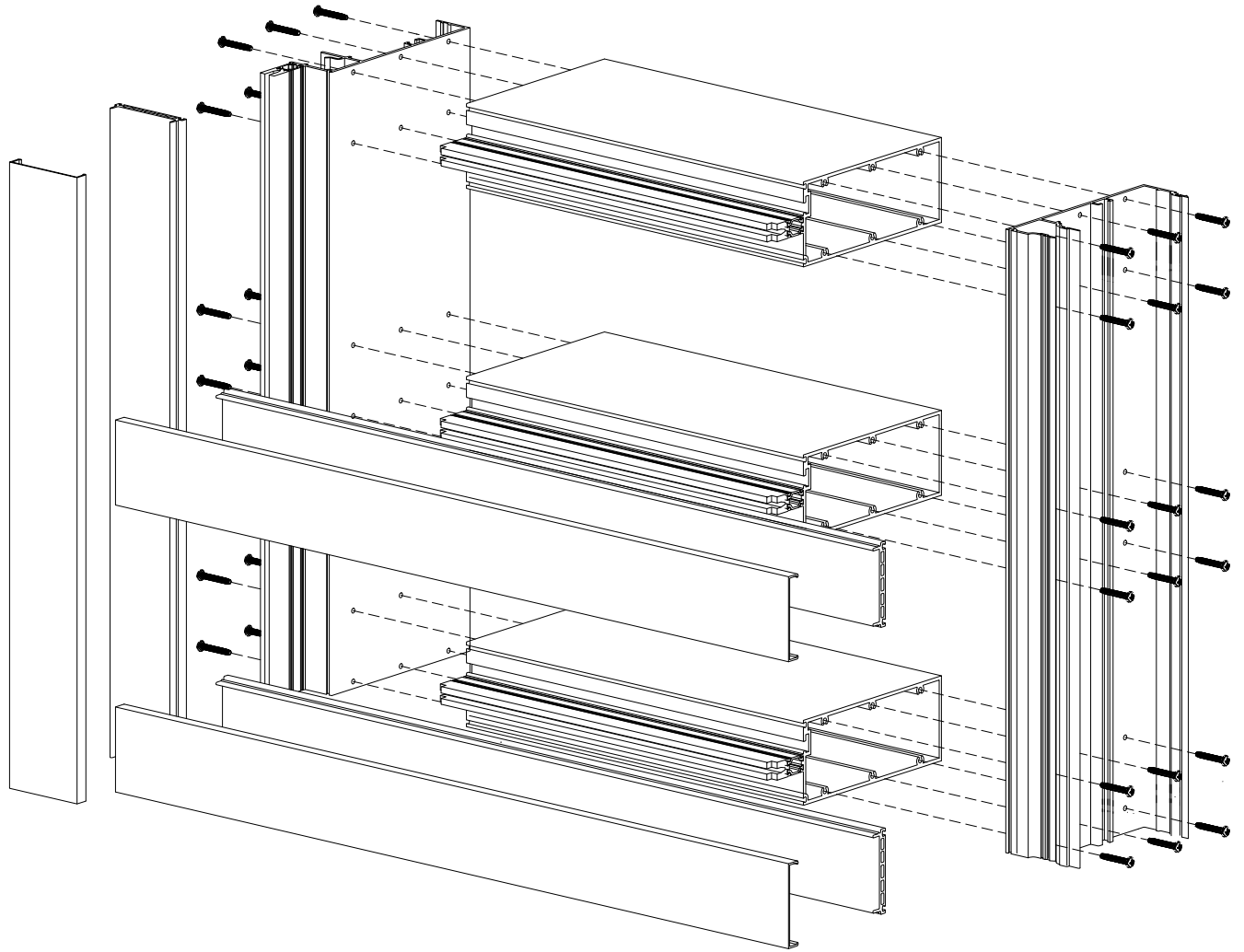
THERMTEK.COM



EXTERIOR

INTERIOR

TYPICAL BACK MEMBER UNIT
(CAPTURED SYSTEM)



TYPICAL ASSEMBLY

(CAPTURED SYSTEM)

Laws and building and safety codes governing the design and use of glazed entrance, window, and curtain wall products vary widely. THERMTEK™ does not control the selection of product configurations, operating hardware, or glazing materials, and assumes no responsibility therefor.

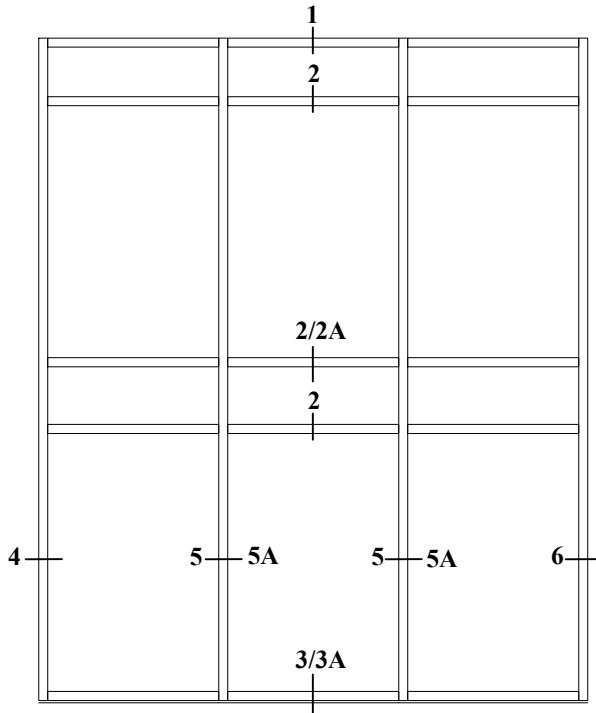
THERMTEK™ reserves the right to change configuration without prior notice when deemed necessary for product improvement.

™THERMTEK.COM

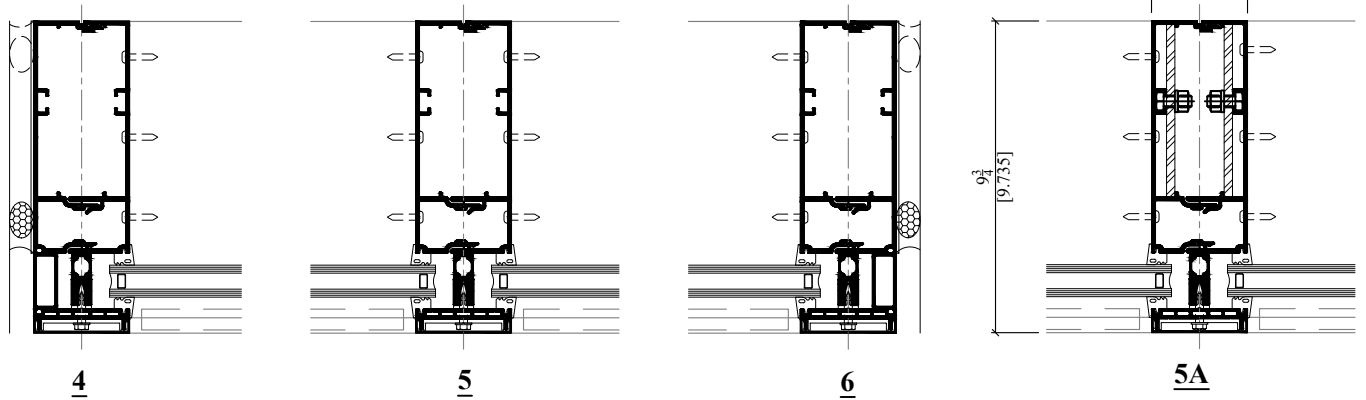
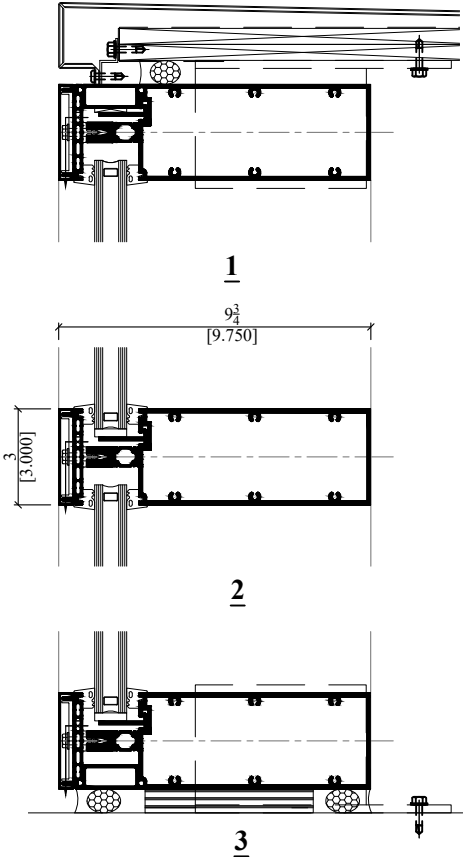
1" INFILL DETAILS (CAPTURED SYSTEM)

Additional information and CAD details are available at THERMTEK.COM

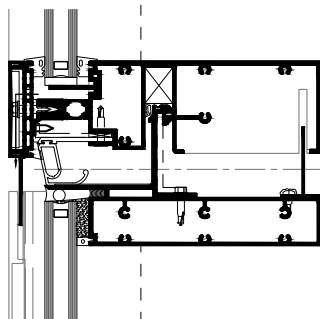
*INSTALLER NOTE: Installer is responsible for all required compatibility review and approvals with the structural silicone manufacturer and the insulating glass unit manufacturer.



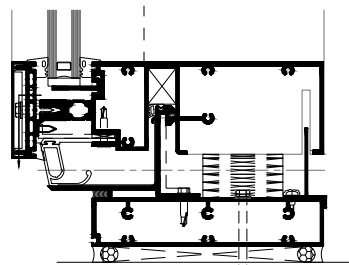
TYPICAL ELEVATION
(CAPTURED SYSTEM)



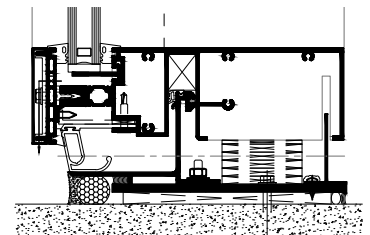
OPTIONAL STEEL
REINFORCING AS REQUIRED



2A
STACK OPTION



3A
STARTER SILL
OPTION



STARTER SILL LOW
PROFILE OPTION

Laws and building and safety codes governing the design and use of glazed entrance, window, and curtain wall products vary widely. THERMTEK™ does not control the selection of product configurations, operating hardware, or glazing materials, and assumes no responsibility therefor.

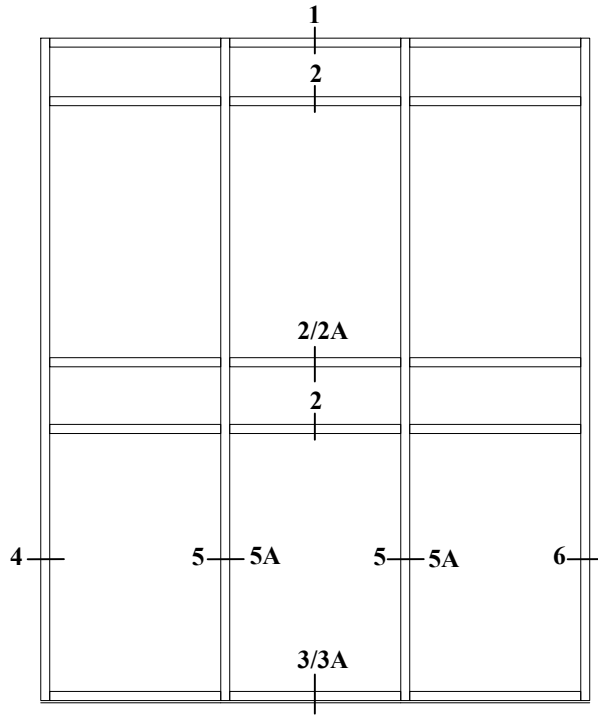
THERMTEK™ reserves the right to change configuration without prior notice when deemed necessary for product improvement.

™THERMTEK.COM

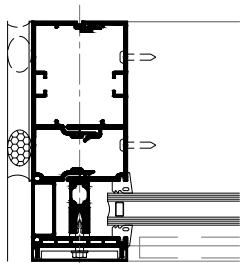
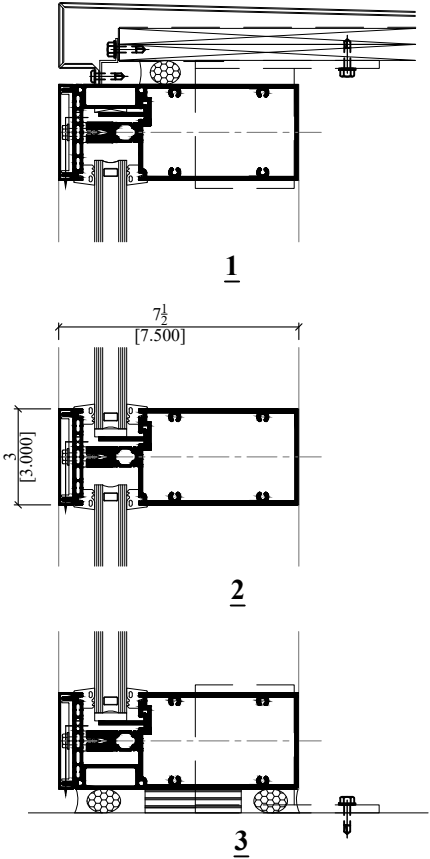
1" INFILL DETAILS (CAPTURED 7 1/2" SYSTEM)

Additional information and CAD details are available at THERMTEK.COM

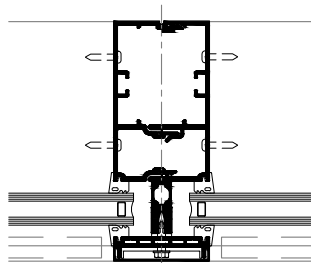
*INSTALLER NOTE: Installer is responsible for all required compatibility review and approvals with the structural silicone manufacturer and the insulating glass unit manufacturer.



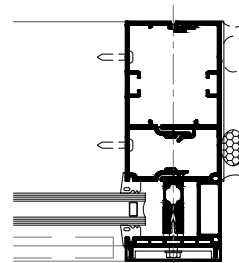
TYPICAL ELEVATION
(CAPTURED SYSTEM)



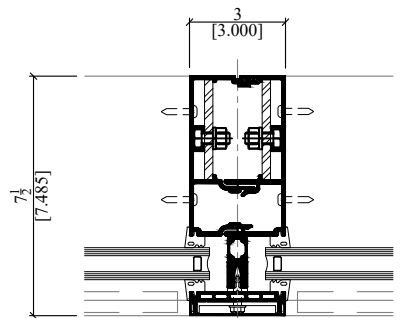
4



5

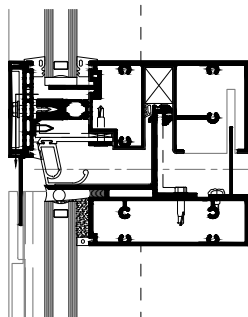


6

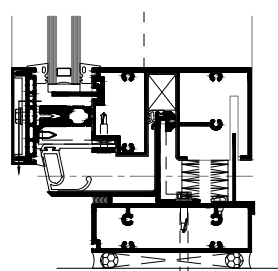


5A

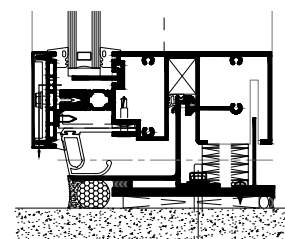
OPTIONAL STEEL
REINFORCING AS REQUIRED



2A
STACK OPTION



3A
STARTER SILL
OPTION

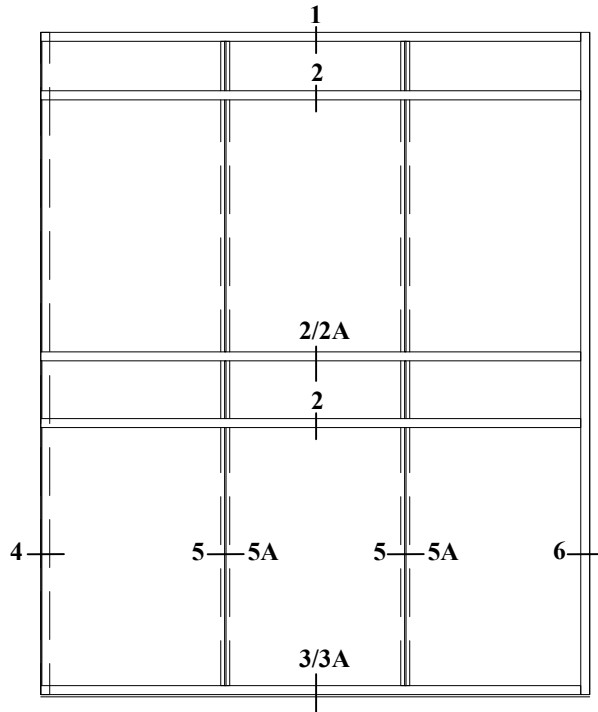


STARTER SILL LOW
PROFILE OPTION

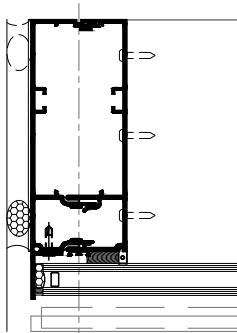
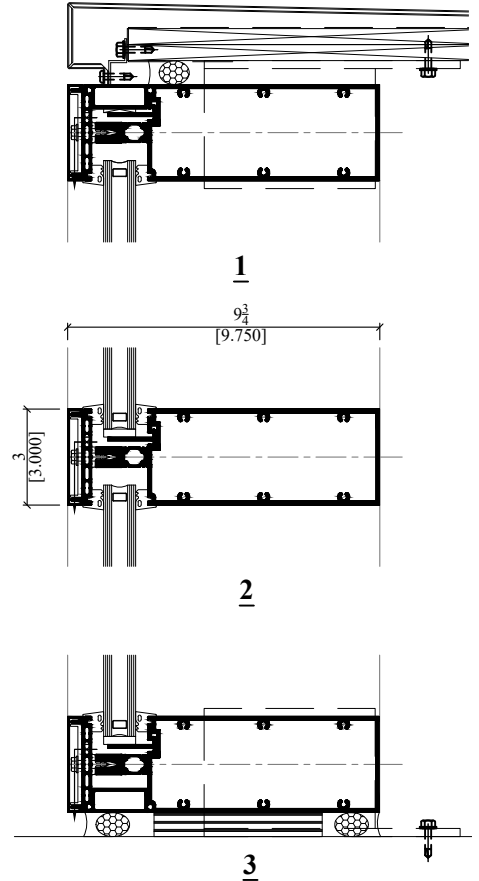
1" INFILL DETAILS (VERTICAL SSG)

Additional information and CAD details are available at THERMTEK.COM

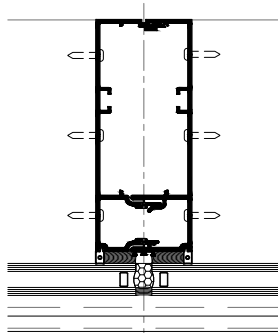
*INSTALLER NOTE: Installer is responsible for all required compatibility review and approvals with the structural silicone manufacturer and the insulating glass unit manufacturer.



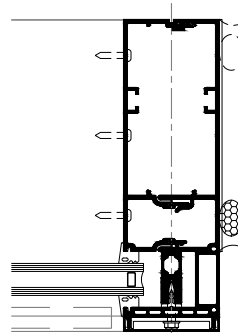
TYPICAL ELEVATION
(VERTICAL SSG)



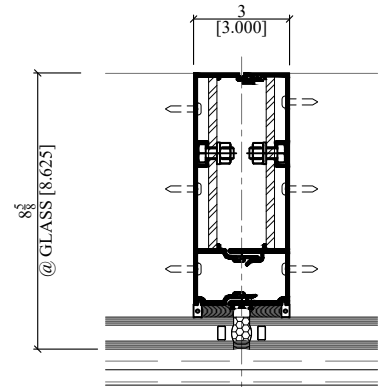
4



5

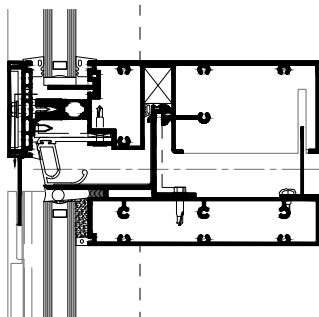


6

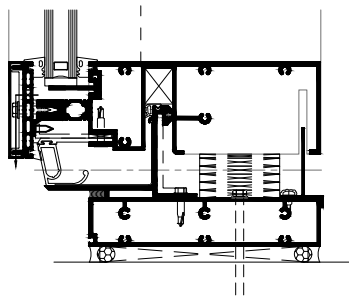


5A

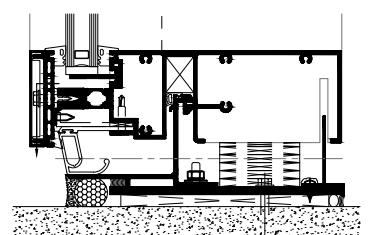
OPTIONAL STEEL
REINFORCING AS REQUIRED



2A
STACK OPTION



3A
STARTER SILL
OPTION



STARTER SILL LOW
PROFILE OPTION

Laws and building and safety codes governing the design and use of glazed entrance, window, and curtain wall products vary widely. THERMTEK™ does not control the selection of product configurations, operating hardware, or glazing materials, and assumes no responsibility therefor.

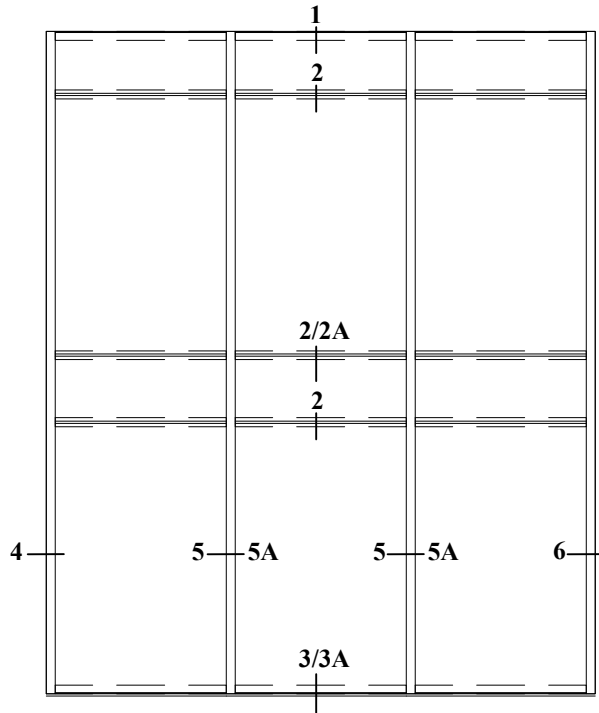
THERMTEK™ reserves the right to change configuration without prior notice when deemed necessary for product improvement.

™THERMTEK.COM

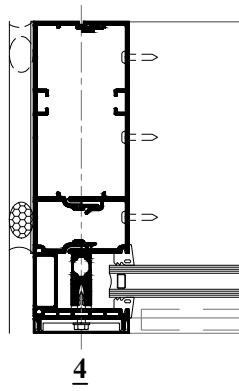
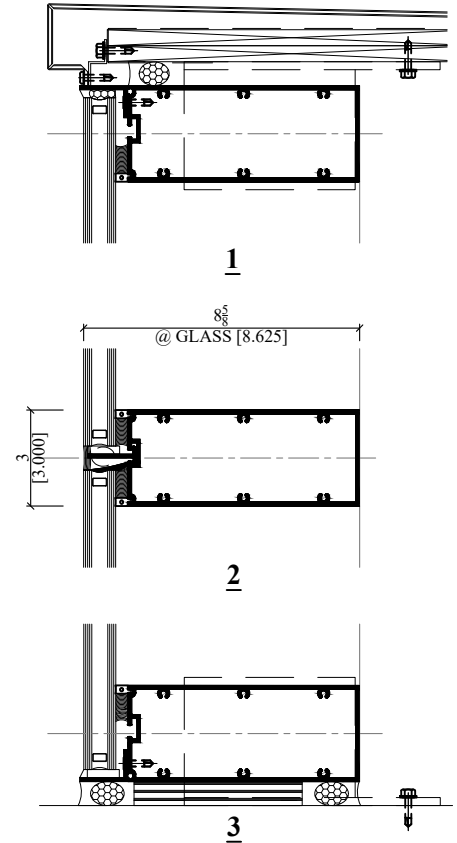
1 INFILL DETAILS (HORIZONTAL SSG)

Additional information and CAD details are available at THERMTEK.COM

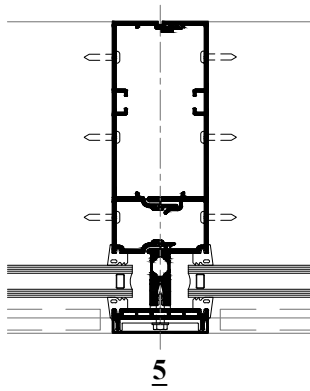
*INSTALLER NOTE: Installer is responsible for all required compatibility review and approvals with the structural silicone manufacturer and the insulating glass unit manufacturer.



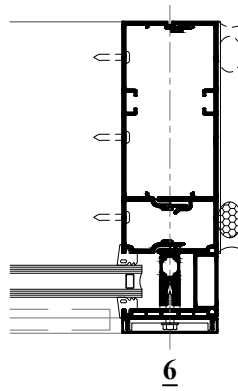
TYPICAL ELEVATION
(HORIZONTAL SSG)



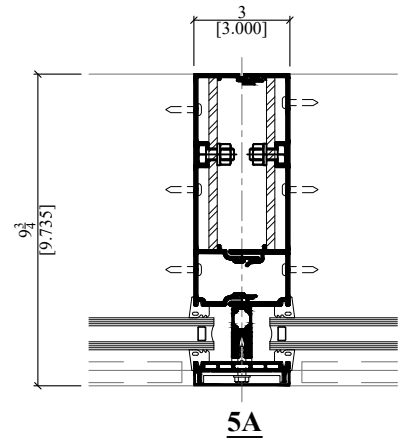
4



5

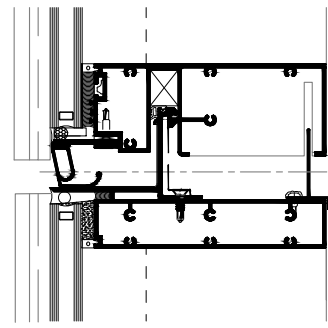


6

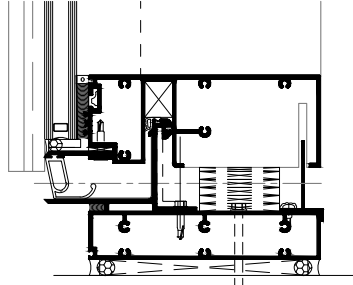


5A

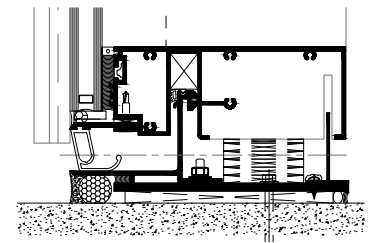
OPTIONAL STEEL
REINFORCING AS REQUIRED



2A
STACK OPTION



3A
STARTER SILL
OPTION



STARTER SILL LOW
PROFILE OPTION

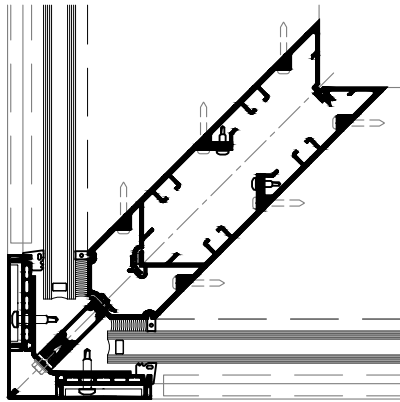
Laws and building and safety codes governing the design and use of glazed entrance, window, and curtain wall products vary widely. THERMTEK™ does not control the selection of product configurations, operating hardware, or glazing materials, and assumes no responsibility therefor.

THERMTEK™ reserves the right to change configuration without prior notice when deemed necessary for product improvement.

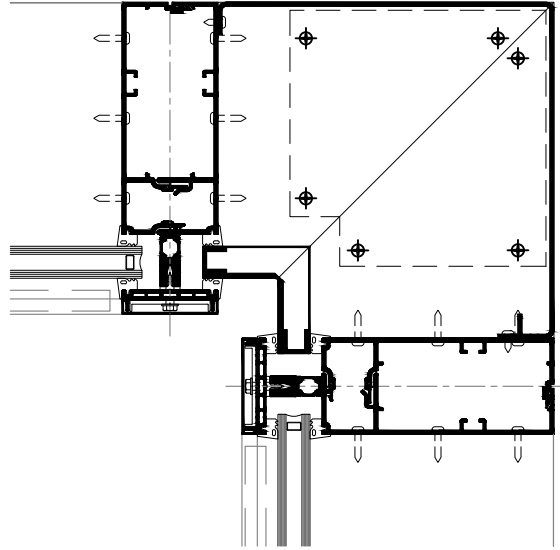
THERMTEK.COM

1" INFILL DETAILS (CAPTURED CORNERS)

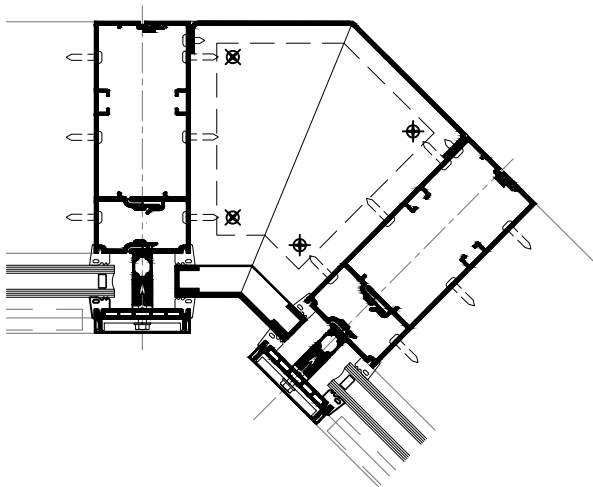
Additional information and CAD details are available at THERMTEK.COM



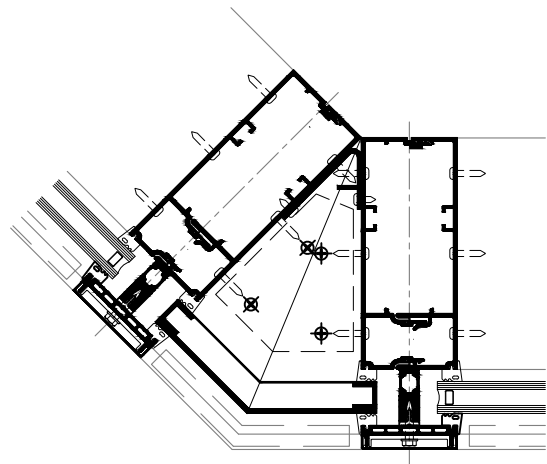
90° OUTSIDE CORNER
(CAPTURED)



90° INSIDE CORNER
(CAPTURED)



135° INSIDE CORNER
(CAPTURED)



135° OUTSIDE CORNER
(CAPTURED)

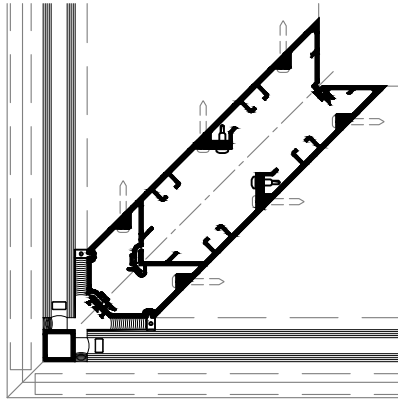
*INSTALLER NOTE: Installer is responsible for all required compatibility review and approvals with the structural silicone manufacturer and the insulating glass unit manufacturer.

Laws and building and safety codes governing the design and use of glazed entrance, window, and curtain wall products vary widely. THERMTEK™ does not control the selection of product configurations, operating hardware, or glazing materials, and assumes no responsibility therefor.

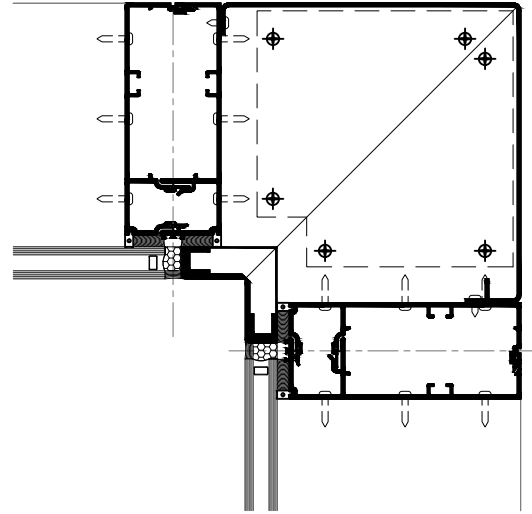
THERMTEK™ reserves the right to change configuration without prior notice when deemed necessary for product improvement.
THERMTEK.COM

1" INFILL DETAILS (SSG CORNERS)

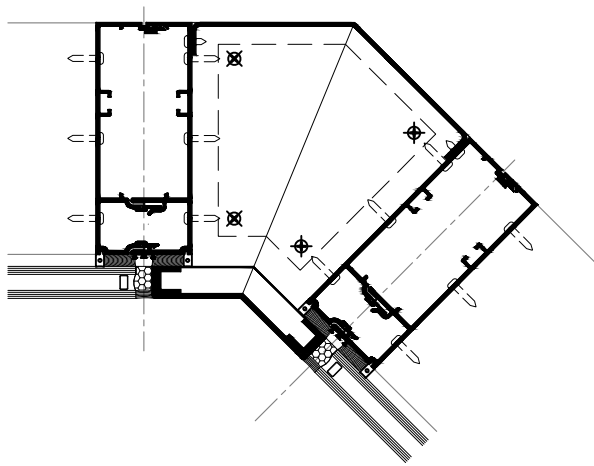
Additional information and CAD details are available at THERMTEK.COM



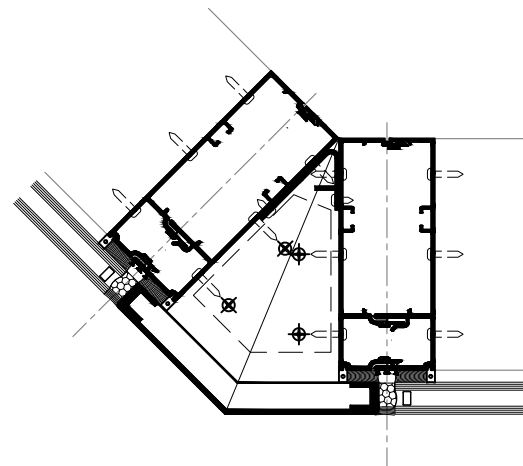
90° OUTSIDE CORNER (SSG)



90° INSIDE CORNER (SSG)



135° INSIDE CORNER (SSG)



135° OUTSIDE CORNER (SSG)

*INSTALLER NOTE: Installer is responsible for all required compatibility review and approvals with the structural silicone manufacturer and the insulating glass unit manufacturer.

Laws and building and safety codes governing the design and use of glazed entrance, window, and curtain wall products vary widely. THERMTEK™ does not control the selection of product configurations, operating hardware, or glazing materials, and assumes no responsibility therefor.

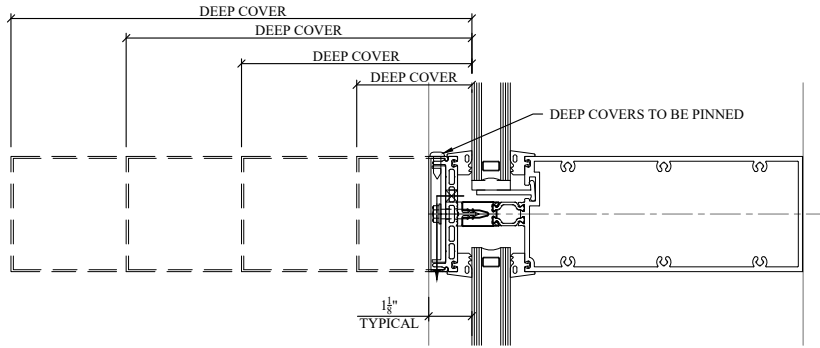
THERMTEK™ reserves the right to change configuration without prior notice when deemed necessary for product improvement.
™THERMTEK.COM

COVERS

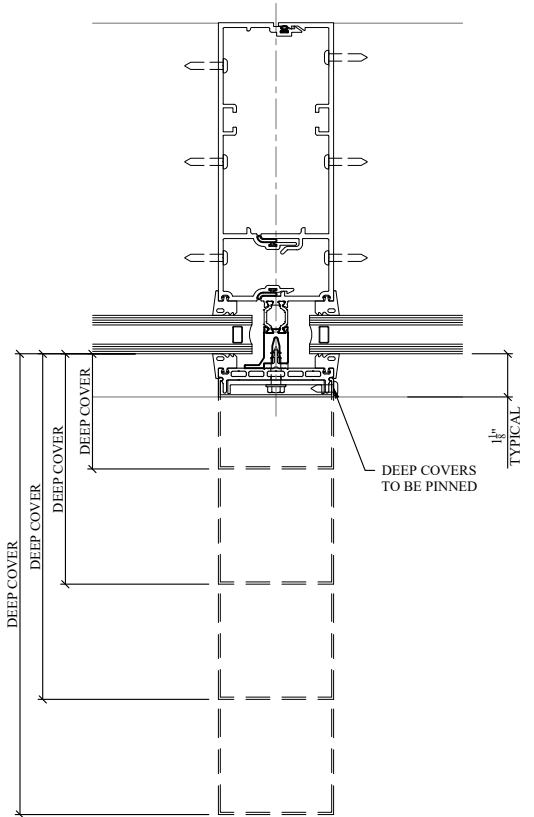
Additional information and CAD details are available at THERMTEK.COM

Laws and building and safety codes governing the design and use of glazed entrance, window, and curtain wall products vary widely. THERMTEK™ does not control the selection of product configurations, operating hardware, or glazing materials, and assumes no responsibility therefor.

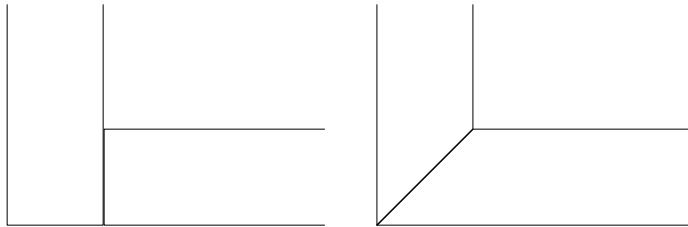
THERMTEK™ reserves the right to change configuration without prior notice when deemed necessary for product improvement.
™THERMTEK.COM



HORIZONTAL COVER DEPTH



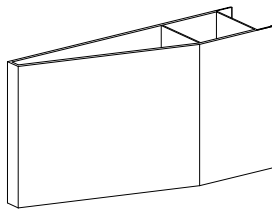
VERTICAL COVER DEPTH



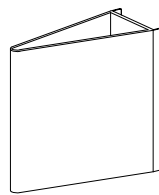
BUTT JOINT

PICTURE FRAME

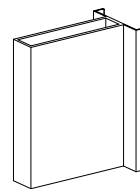
COVER FABRICATION



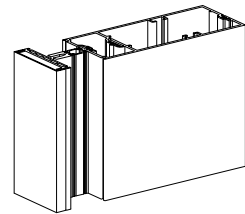
DEEP SLOPED COVER



POINTED COVER



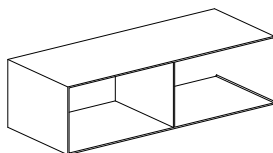
CENTER FIN COVER



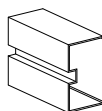
STANDARD COVER ON VERTICAL

VARIETY OF COVER SHAPE OPTIONS FOR HORIZONTAL AND VERTICAL APPLICATIONS.

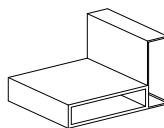
NOTE: NOT LIMITED TO OPTIONS SHOWN



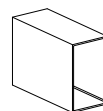
DEEP SQUARE COVER



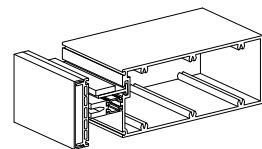
REVEAL COVER



OFFSET FIN COVER



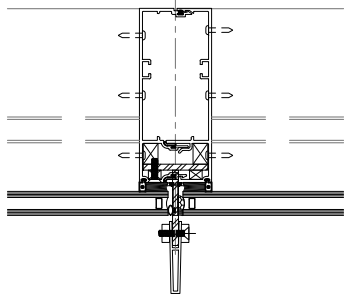
EXTENDED COVER



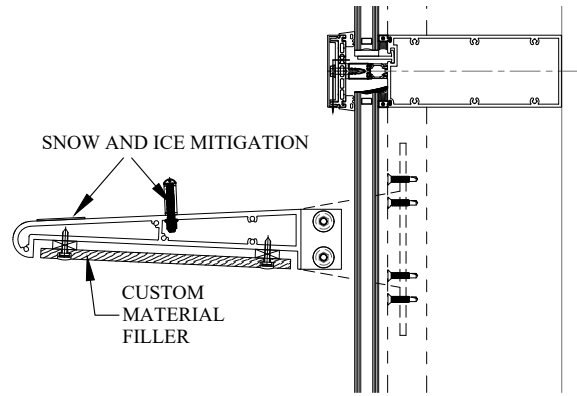
STANDARD COVER ON HORIZONTAL

VERTICAL ATTACHMENTS

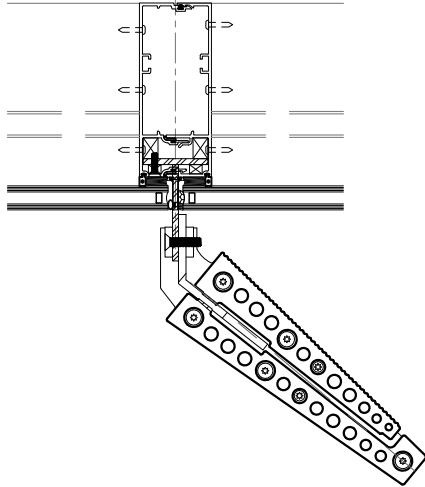
Additional information and CAD details are available at THERMTEK.COM



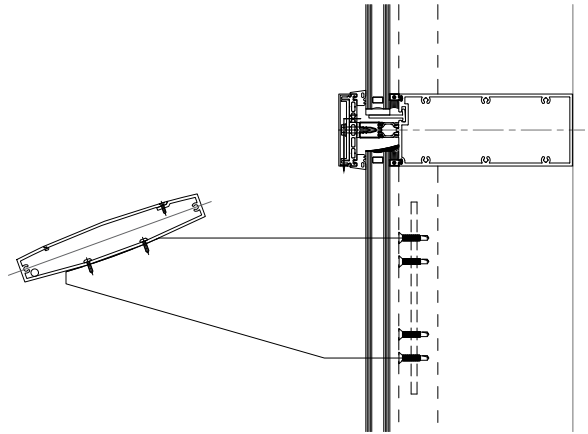
VERTICAL ALUM. FINS



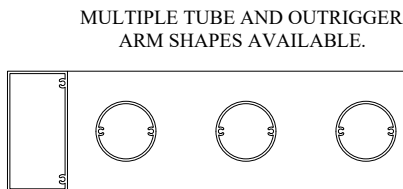
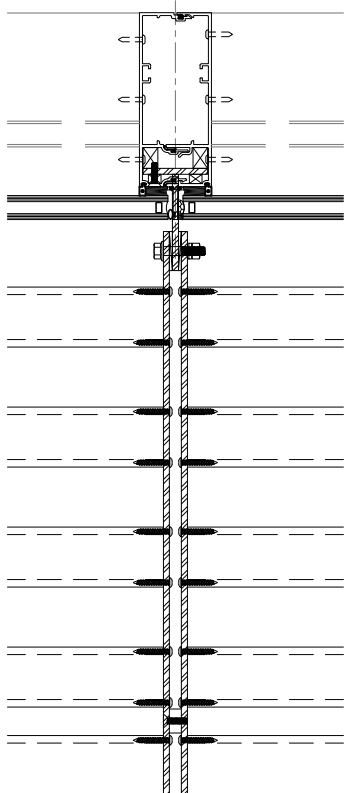
SUNSHADE w/CUSTOM SOFFIT



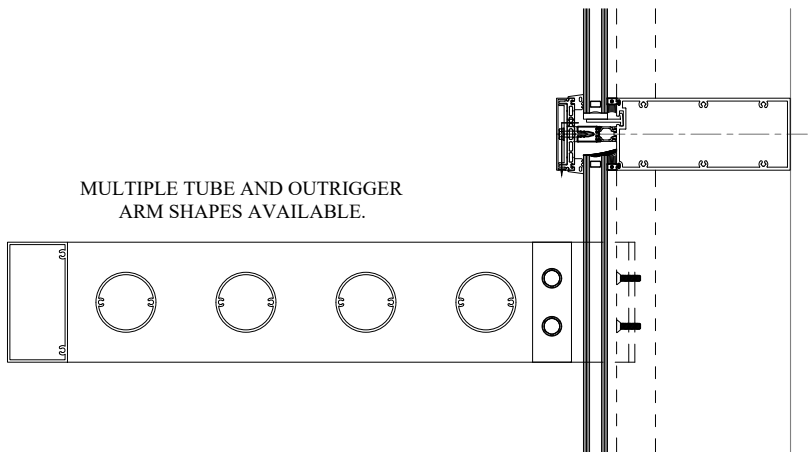
VERTICAL TERRACOTTA FINS



SINGLE BLADE SUNSHADE



HORIZONTAL SUNSHADES



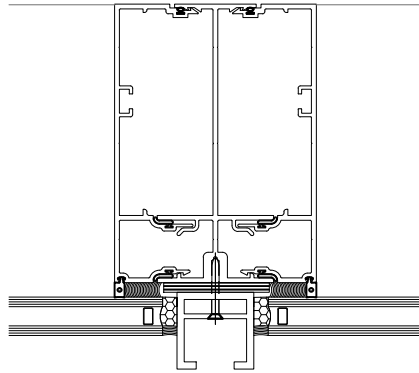
NOTE: Attachments do not penetrate air and water lines.
Attachment and bracket will vary per job conditions and calculations.

Laws and building and safety codes governing the design and use of glazed entrance, window, and curtain wall products vary widely. THERMTEK™ does not control the selection of product configurations, operating hardware, or glazing materials, and assumes no responsibility therefor.

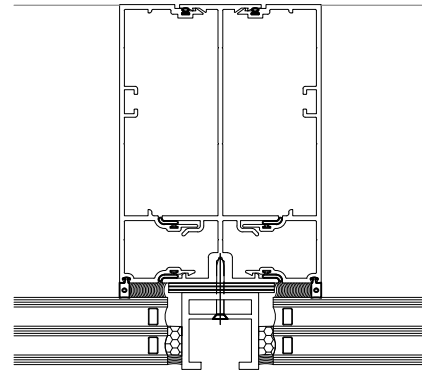
THERMTEK™ reserves the right to change configuration without prior notice when deemed necessary for product improvement.
™THERMTEK.COM

WINDOW WASHER

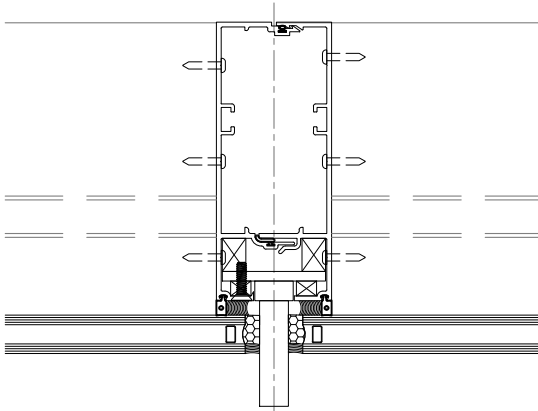
Additional information and CAD details are available at THERMTEK.COM



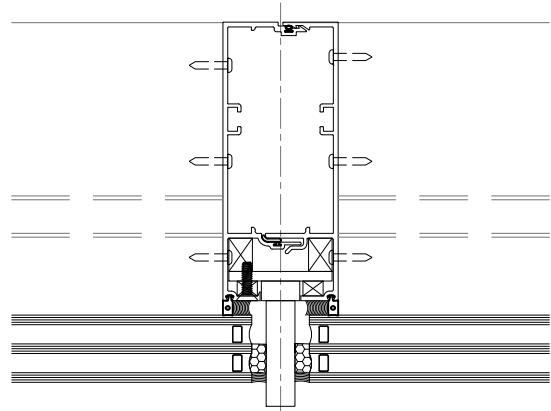
WINDOW WASHER CHANNEL
DOUBLE GLAZED



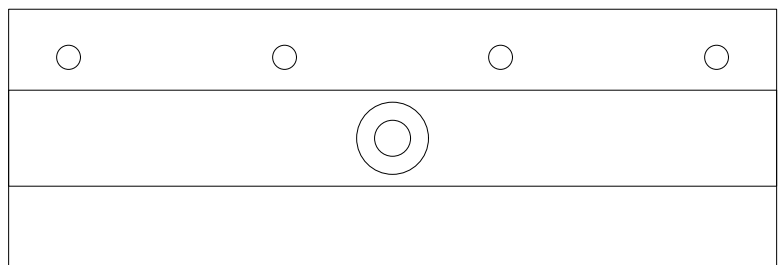
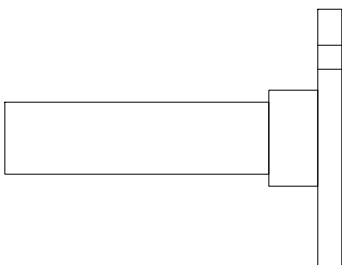
WINDOW WASHER CHANNEL
TRIPLE GLAZED



WINDOW WASHER PIN
DOUBLE GLAZED



WINDOW WASHER PIN
TRIPLE GLAZED



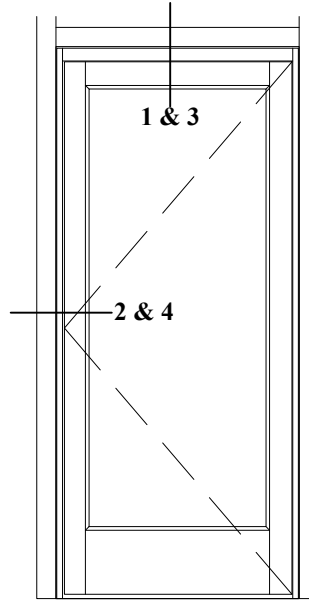
WINDOW WASHER PIN
BRACKET

Laws and building and safety codes governing the design and use of glazed entrance, window, and curtain wall products vary widely. THERMTEK™ does not control the selection of product configurations, operating hardware, or glazing materials, and assumes no responsibility therefor.

THERMTEK™ reserves the right to change configuration without prior notice when deemed necessary for product improvement.

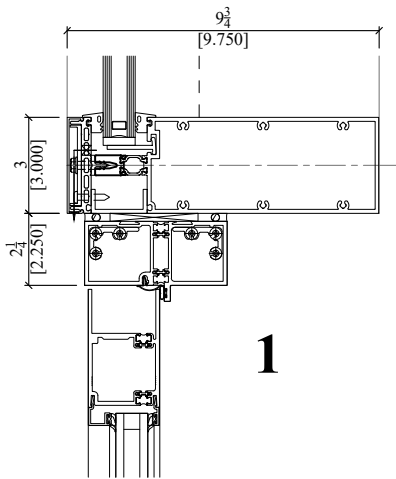
™THERMTEK.COM

Additional information and CAD details are available at THERMTEK.COM

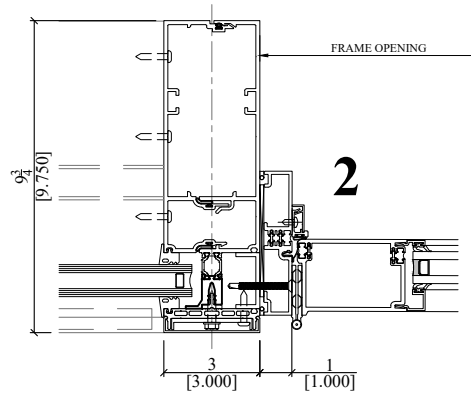


NOTE: 350T THERMAL DOOR SHOWN. MULTIPLE TYPES OF KAWNEER DOORS MAY BE USED WITH THIS FRAMING SYSTEM.

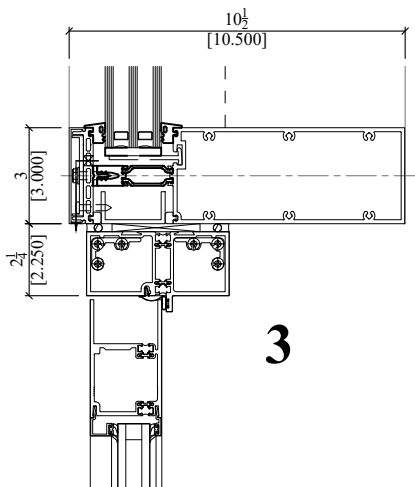
ELEVATION IS NUMBER KEYED TO DETAILS



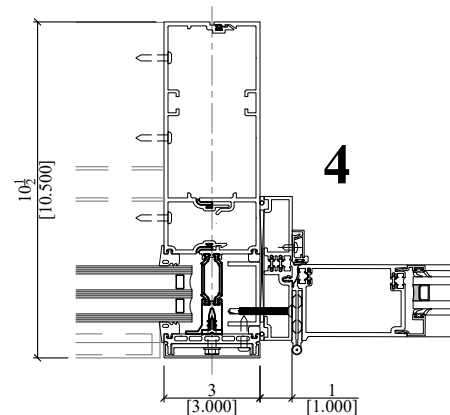
DOOR HEAD @ 1" GLASS



DOOR JAMB @ 1" GLASS



DOOR HEAD @ 1 3/4" GLASS



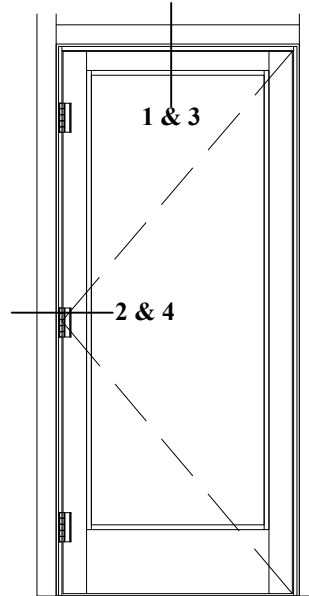
DOOR JAMB @ 1 3/4" GLASS

Laws and building and safety codes governing the design and use of glazed entrance, window, and curtain wall products vary widely. THERMTEK™ does not control the selection of product configurations, operating hardware, or glazing materials, and assumes no responsibility therefor.

THERMTEK™ reserves the right to change configuration without prior notice when deemed necessary for product improvement.

™THERMTEK.COM

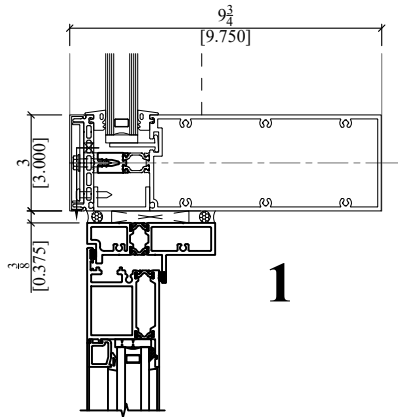
Additional information and CAD details are available at THERMTEK.COM



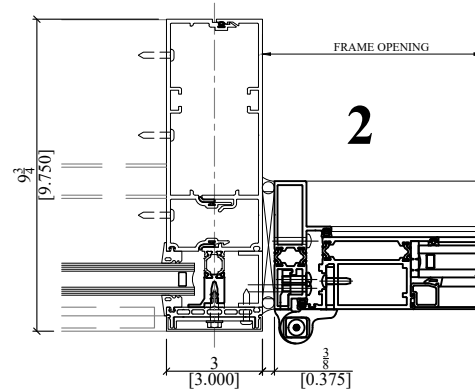
NOTE: 2000T TERRACE DOOR REQUIRES MIN. 38 1/4" FRAME OPENING

NOTE: 2000T TERRACE DOOR SHOWN. MULTIPLE TYPES OF KAWNEER DOORS MAY BE USED WITH THIS FRAMING SYSTEM.

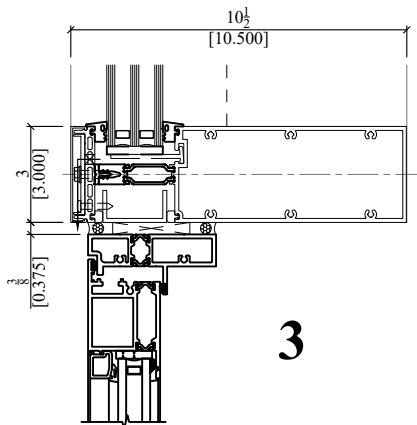
ELEVATION IS NUMBER KEYED TO DETAILS



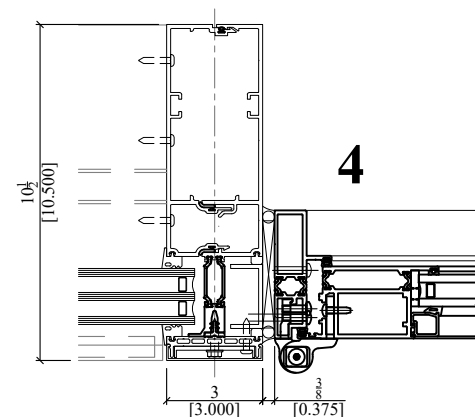
DOOR HEAD @ 1" GLASS



DOOR JAMB @ 1" GLASS



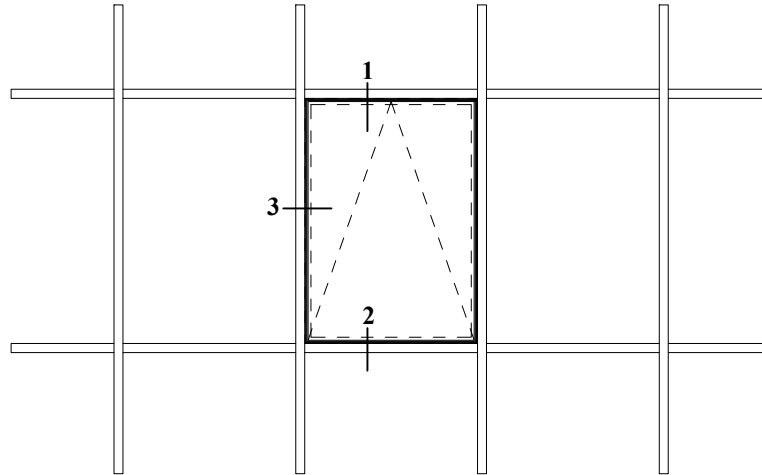
DOOR HEAD @ 1 3/4" GLASS



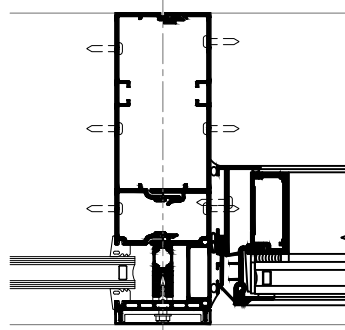
DOOR JAMB @ 1 3/4" GLASS

1" INFILL DETAILS (VENT)

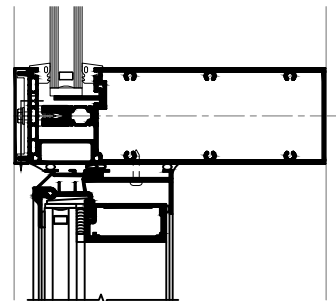
Additional information and CAD details are available at THERMTEK.COM



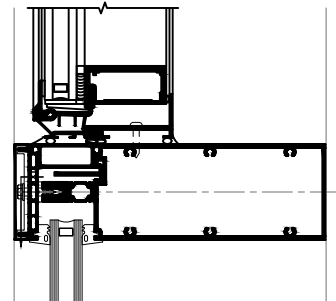
VENT ELEVATION



3.) JAMB



1.) HEAD



2.) SILL

Project-out Glassvent UT window shown
Casement window similar

*INSTALLER NOTE: Installer is responsible for all required compatibility review and approvals with the structural silicone manufacturer and the insulating glass unit manufacturer.

Laws and building and safety codes governing the design and use of glazed entrance, window, and curtain wall products vary widely. THERMTEK™ does not control the selection of product configurations, operating hardware, or glazing materials, and assumes no responsibility therefor.

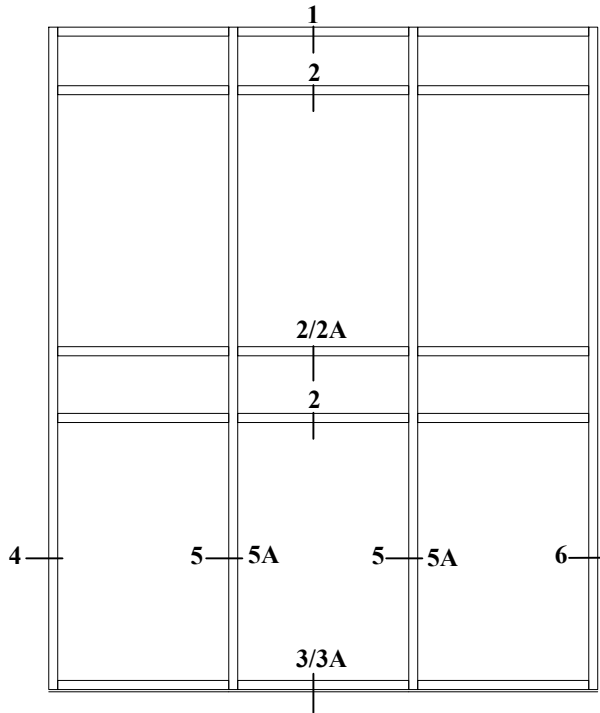
THERMTEK™ reserves the right to change configuration without prior notice when deemed necessary for product improvement.

THERMTEK.COM

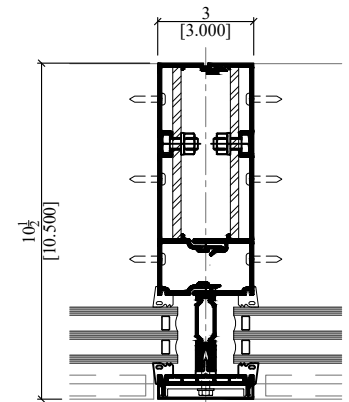
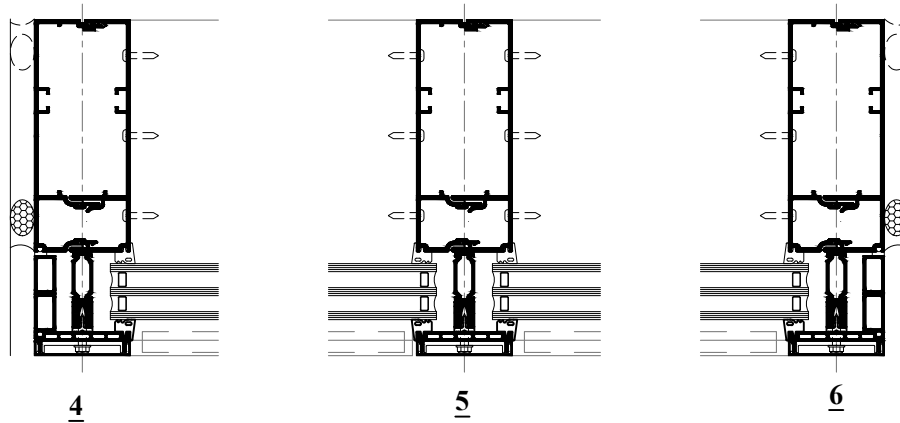
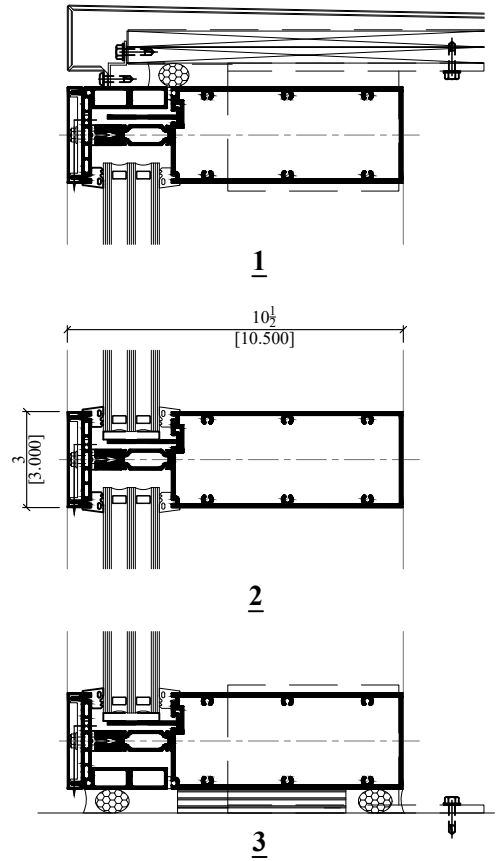
1 3/4" INFILL DETAILS (CAPTURED SYSTEM)

Additional information and CAD details are available at THERMTEK.COM

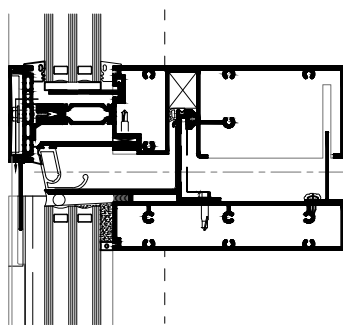
*INSTALLER NOTE: Installer is responsible for all required compatibility review and approvals with the structural silicone manufacturer and the insulating glass unit manufacturer.



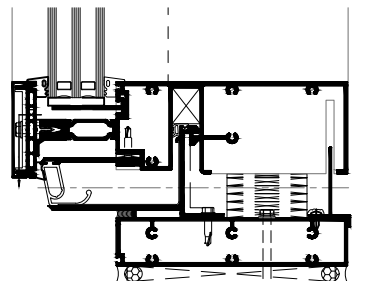
TYPICAL ELEVATION
(CAPTURED SYSTEM)



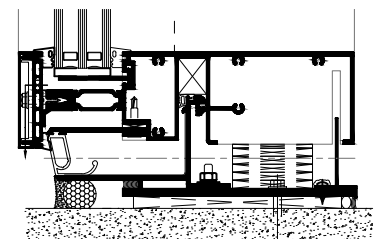
OPTIONAL STEEL
REINFORCING AS REQUIRED



2A
STACK OPTION



3A
STARTER SILL
OPTION



STARTER SILL LOW
PROFILE OPTION

Laws and building and safety codes governing the design and use of glazed entrance, window, and curtain wall products vary widely. THERMTEK™ does not control the selection of product configurations, operating hardware, or glazing materials, and assumes no responsibility therefor.

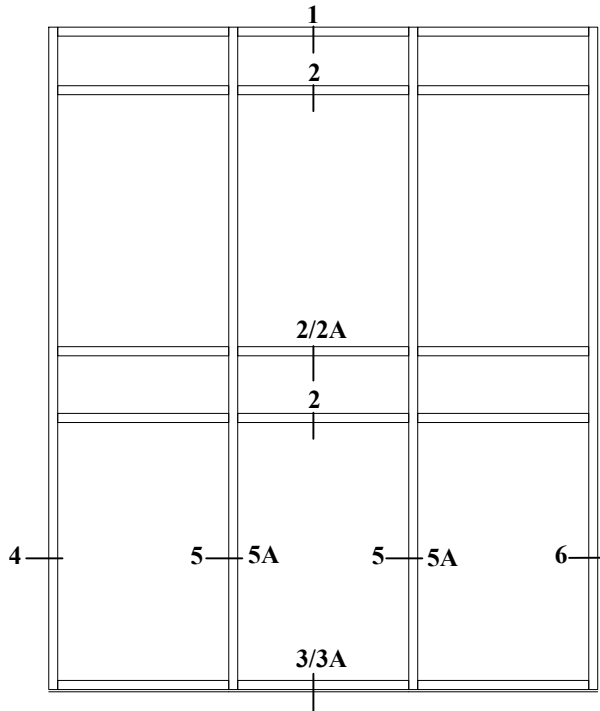
THERMTEK™ reserves the right to change configuration without prior notice when deemed necessary for product improvement.

™THERMTEK.COM

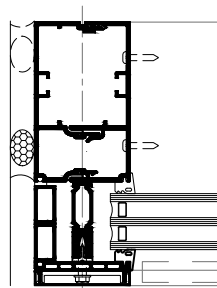
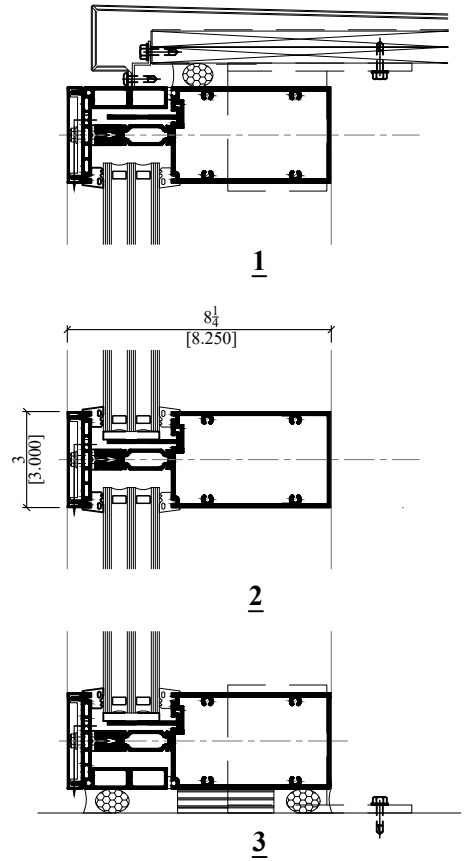
1 3/4" INFILL DETAILS (CAPTURED 8 1/4" SYSTEM)

Additional information and CAD details are available at THERMTEK.COM

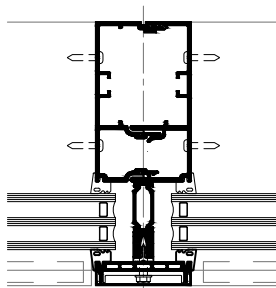
*INSTALLER NOTE: Installer is responsible for all required compatibility review and approvals with the structural silicone manufacturer and the insulating glass unit manufacturer.



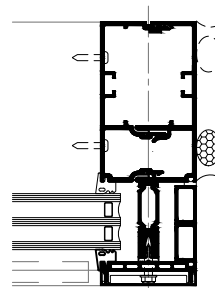
TYPICAL ELEVATION
(CAPTURED SYSTEM)



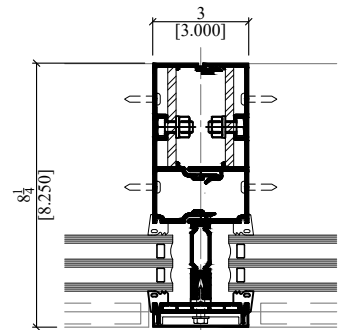
4



5

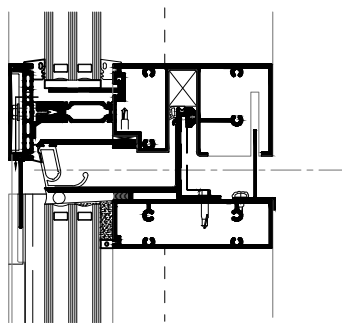


6



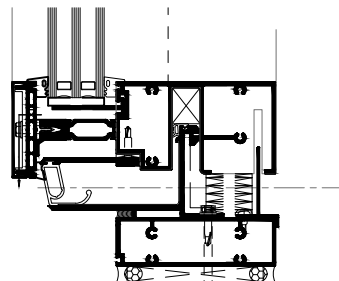
5A

OPTIONAL STEEL
REINFORCING AS REQUIRED



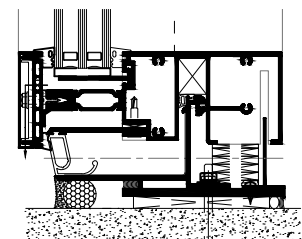
2A

STACK OPTION



3A

STARTER SILL
OPTION



STARTER SILL LOW
PROFILE OPTION

THERMTEK™
HIGH PERFORMANCE CURTAINWALL SYSTEMS

Laws and building and safety codes governing the design and use of glazed entrance, window, and curtain wall products vary widely. THERMTEK™ does not control the selection of product configurations, operating hardware, or glazing materials, and assumes no responsibility therefor.

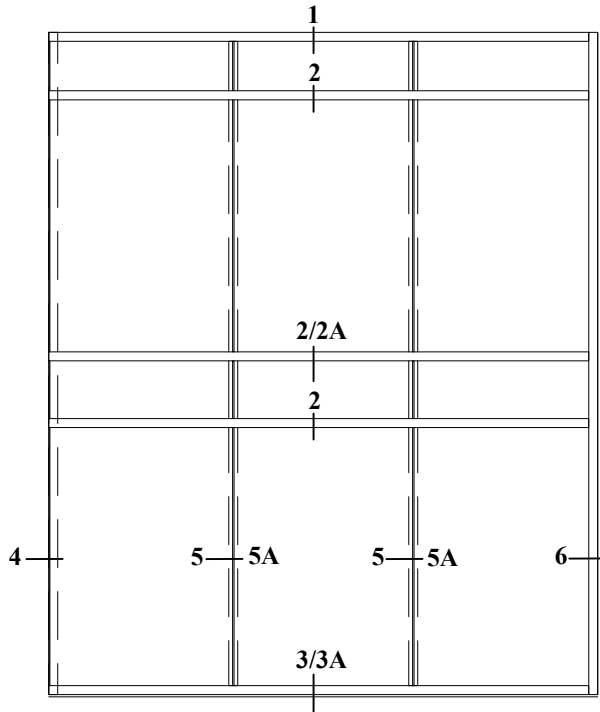
THERMTEK™ reserves the right to change configuration without prior notice when deemed necessary for product improvement.

™THERMTEK.COM

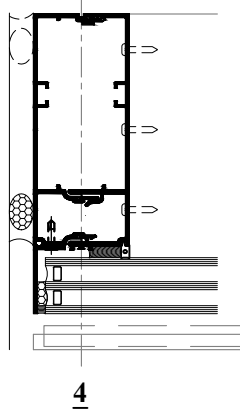
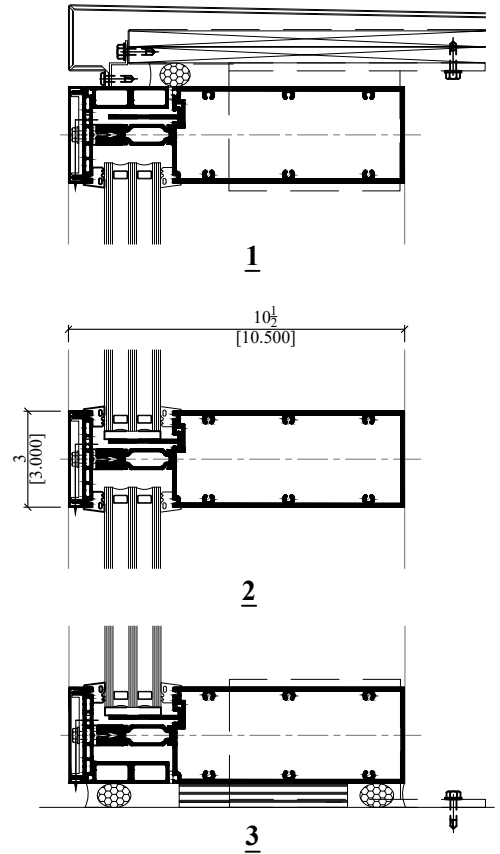
1 3/4" INFILL DETAILS (VERTICAL SSG)

Additional information and CAD details are available at THERMTEK.COM

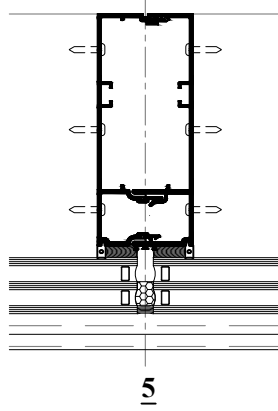
*INSTALLER NOTE: Installer is responsible for all required compatibility review and approvals with the structural silicone manufacturer and the insulating glass unit manufacturer.



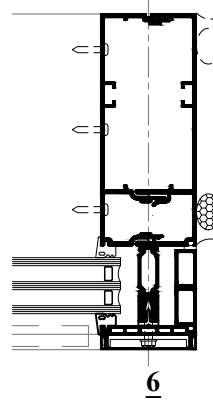
TYPICAL ELEVATION
(VERTICAL SSG)



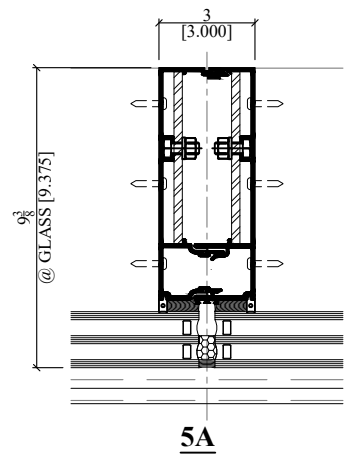
4



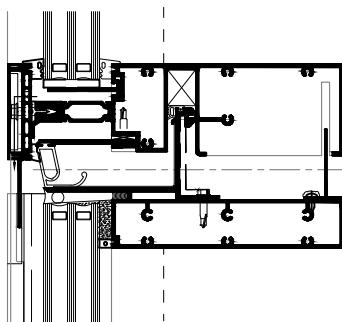
5



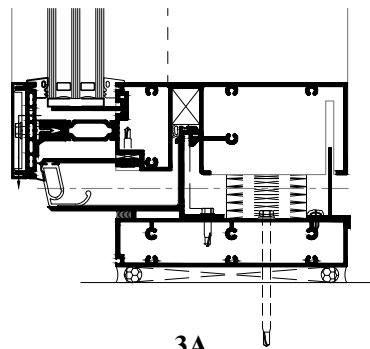
6



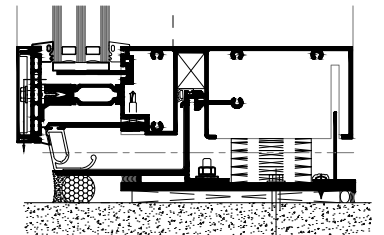
5A
OPTIONAL STEEL
REINFORCING AS REQUIRED



2A
STACK OPTION



3A
STARTER SILL
OPTION



STARTER SILL LOW
PROFILE OPTION

Laws and building and safety codes governing the design and use of glazed entrance, window, and curtain wall products vary widely. THERMTEK™ does not control the selection of product configurations, operating hardware, or glazing materials, and assumes no responsibility therefor.

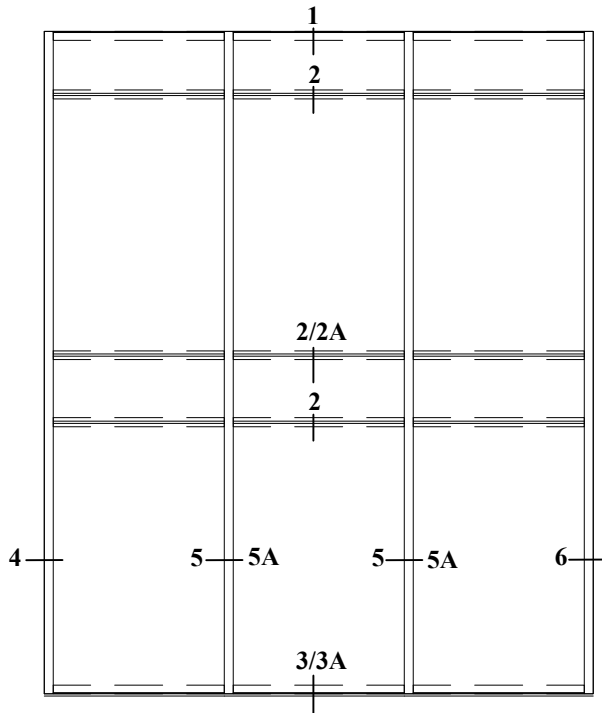
THERMTEK™ reserves the right to change configuration without prior notice when deemed necessary for product improvement.

™THERMTEK.COM

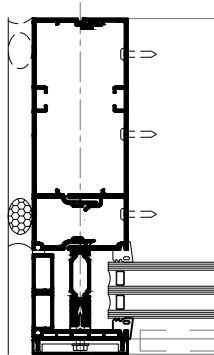
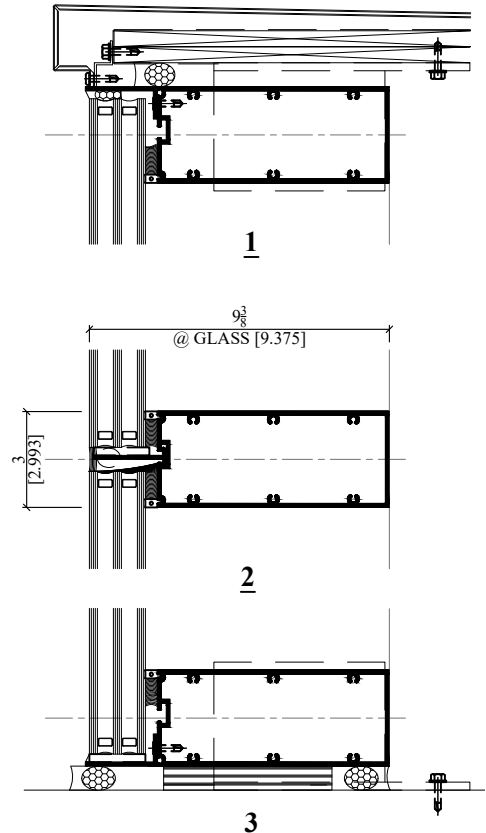
1 3/4" INFILL DETAILS (HORIZONTAL SSG)

Additional information and CAD details are available at THERMTEK.COM

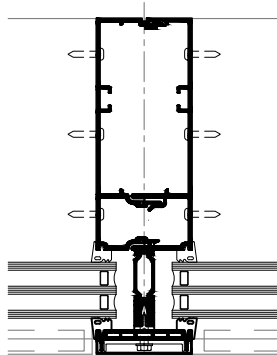
*INSTALLER NOTE: Installer is responsible for all required compatibility review and approvals with the structural silicone manufacturer and the insulating glass unit manufacturer.



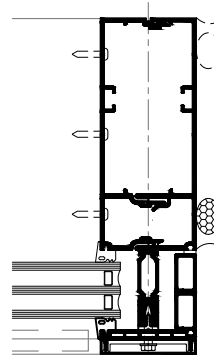
TYPICAL ELEVATION
(HORIZONTAL SSG)



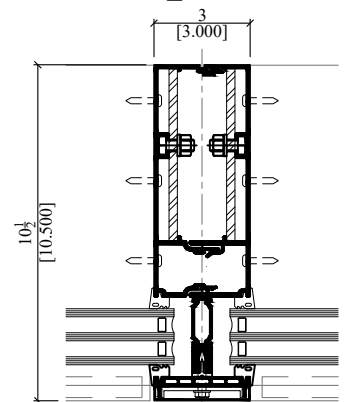
4



5

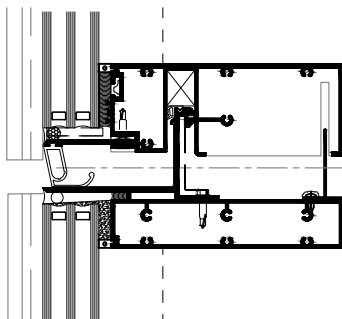


6

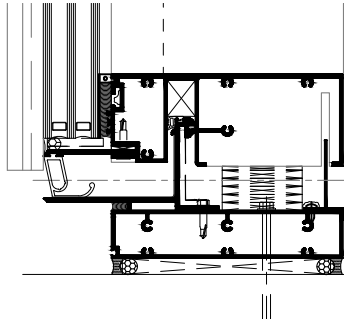


5A

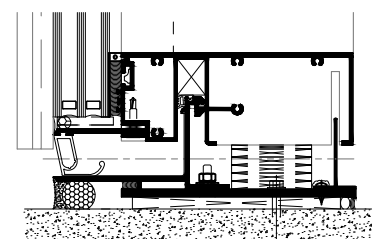
OPTIONAL STEEL
REINFORCING AS REQUIRED



2A
STACK OPTION



3A
STARTER SILL
OPTION



STARTER SILL LOW
PROFILE OPTION

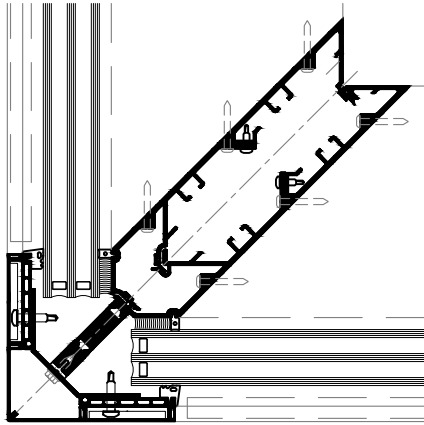
Laws and building and safety codes governing the design and use of glazed entrance, window, and curtain wall products vary widely. THERMTEK™ does not control the selection of product configurations, operating hardware, or glazing materials, and assumes no responsibility therefor.

THERMTEK™ reserves the right to change configuration without prior notice when deemed necessary for product improvement.

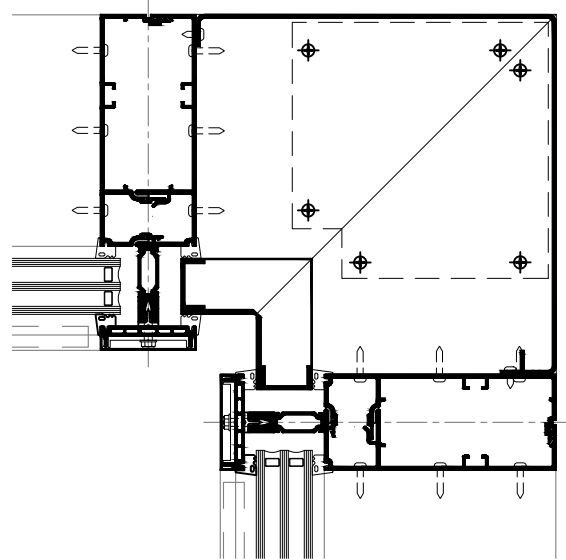
™THERMTEK.COM

1 3/4" INFILL DETAILS (CAPTURED CORNERS)

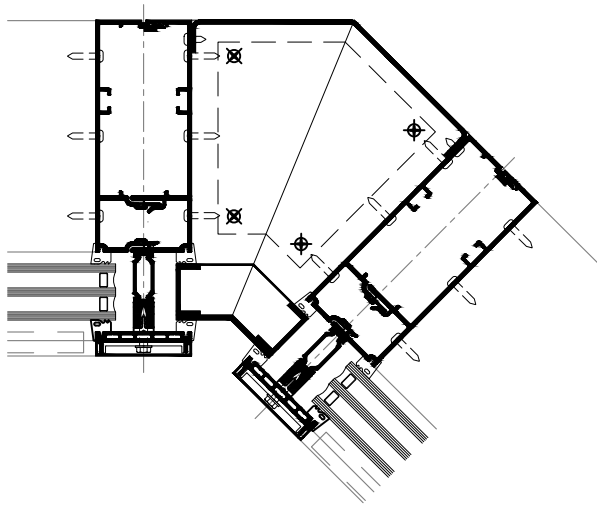
Additional information and CAD details are available at THERMTEK.COM



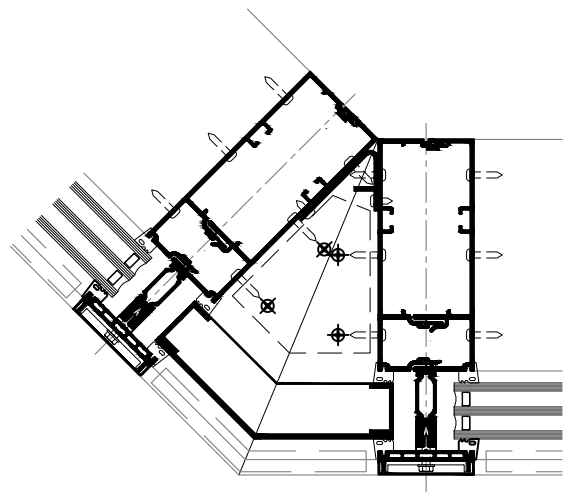
90° OUTSIDE CORNER
(CAPTURED)



90° INSIDE CORNER
(CAPTURED)



135° INSIDE CORNER
(CAPTURED)



135° OUTSIDE CORNER
(CAPTURED)

*INSTALLER NOTE: Installer is responsible for all required compatibility review and approvals with the structural silicone manufacturer and the insulating glass unit manufacturer.

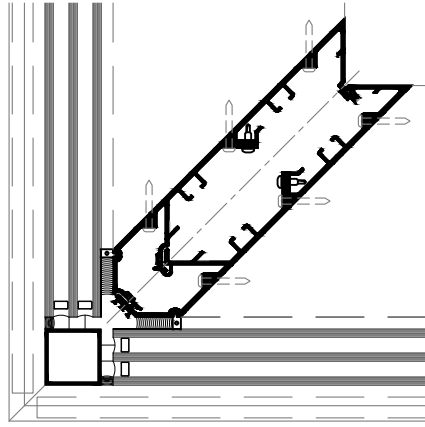
Laws and building and safety codes governing the design and use of glazed entrance, window, and curtain wall products vary widely. THERMTEK™ does not control the selection of product configurations, operating hardware, or glazing materials, and assumes no responsibility therefor.

THERMTEK™ reserves the right to change configuration without prior notice when deemed necessary for product improvement.

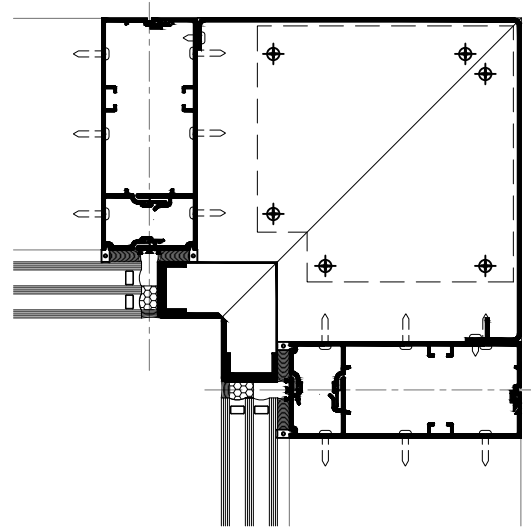
THERMTEK.COM

1 3/4" INFILL DETAILS (SSG CORNERS)

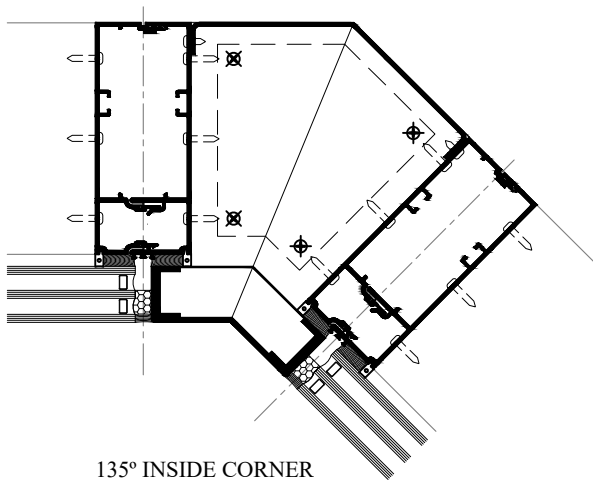
Additional information and CAD details are available at THERMTEK.COM



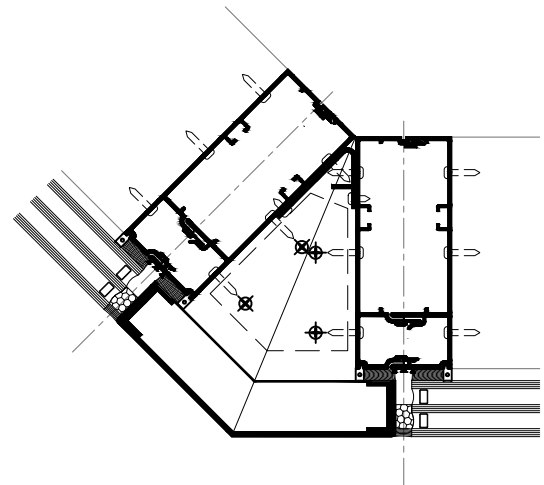
90° OUTSIDE CORNER (SSG)



90° INSIDE CORNER (SSG)



135° INSIDE CORNER (SSG)



135° OUTSIDE CORNER (SSG)

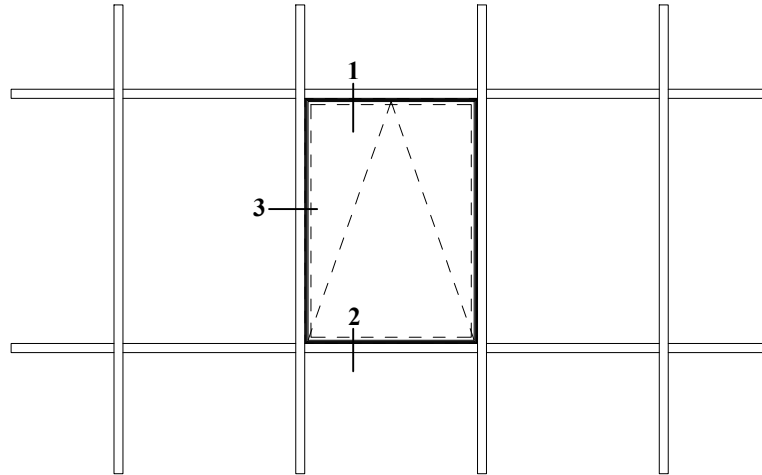
*INSTALLER NOTE: Installer is responsible for all required compatibility review and approvals with the structural silicone manufacturer and the insulating glass unit manufacturer.

Laws and building and safety codes governing the design and use of glazed entrance, window, and curtain wall products vary widely. THERMTEK™ does not control the selection of product configurations, operating hardware, or glazing materials, and assumes no responsibility therefor.

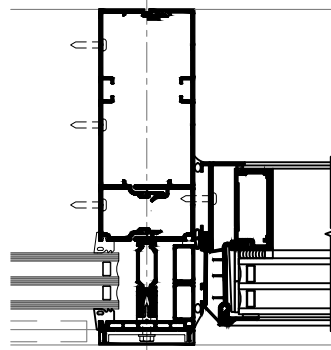
THERMTEK™ reserves the right to change configuration without prior notice when deemed necessary for product improvement.
™THERMTEK.COM

1 3/4" INFILL DETAILS (VENT)

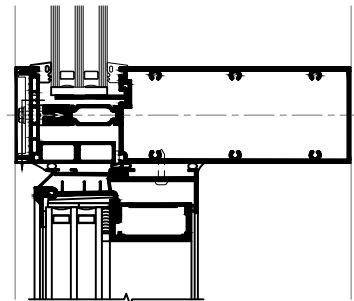
Additional information and CAD details are available at THERMTEK.COM



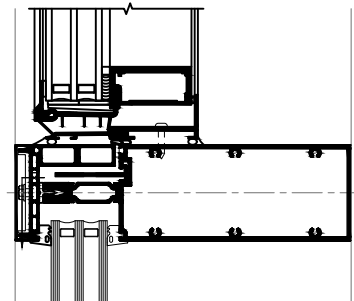
VENT ELEVATION



3.) JAMB



1.) HEAD



2.) SILL

Project-out Glassvent UT window shown
Casement window similar

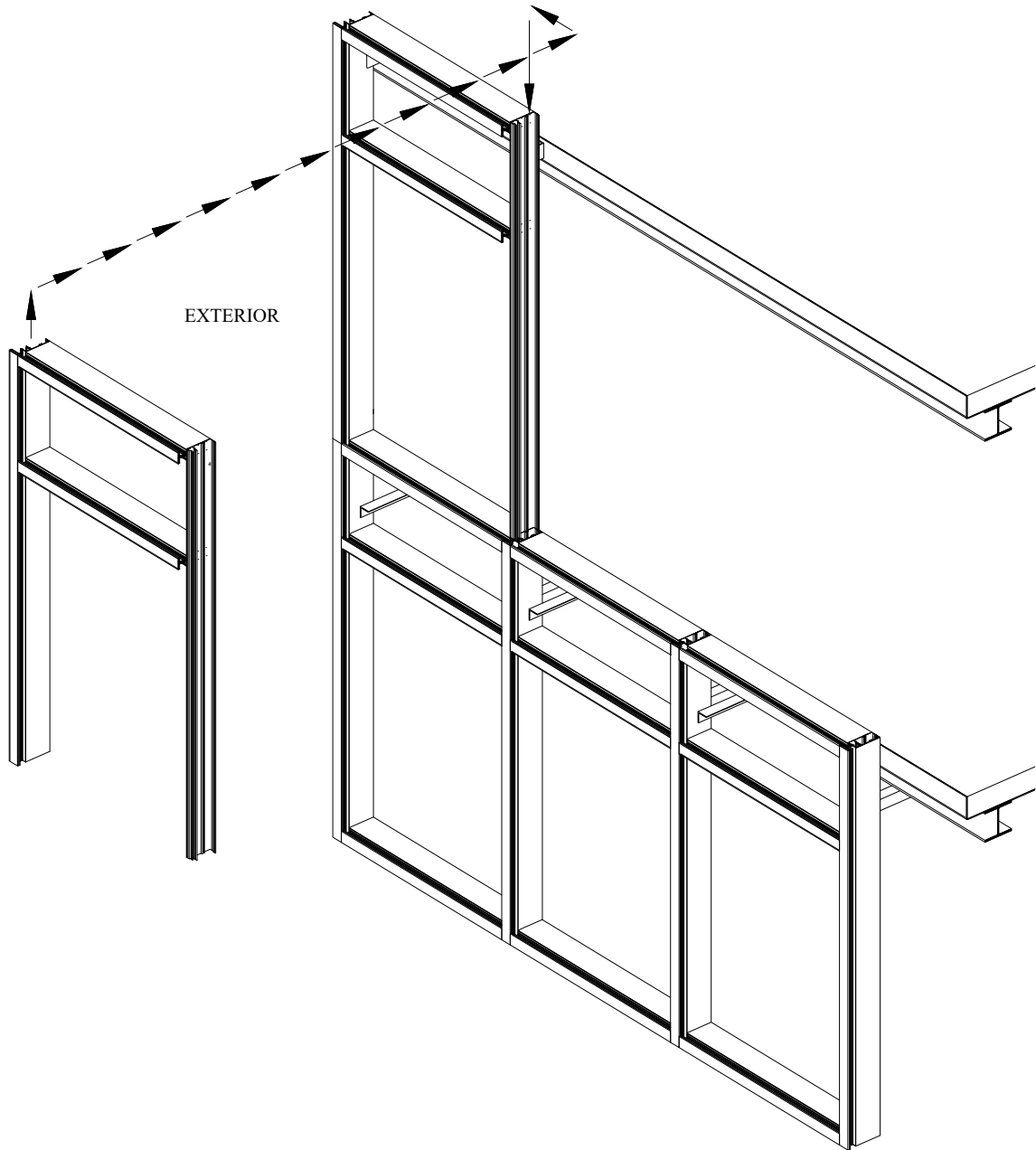
*INSTALLER NOTE: Installer is responsible for all required compatibility review and approvals with the structural silicone manufacturer and the insulating glass unit manufacturer.

Laws and building and safety codes governing the design and use of glazed entrance, window, and curtain wall products vary widely. THERMTEK™ does not control the selection of product configurations, operating hardware, or glazing materials, and assumes no responsibility therefor.

THERMTEK™ reserves the right to change configuration without prior notice when deemed necessary for product improvement.

THERMTEK.COM

PICTORIAL VIEW

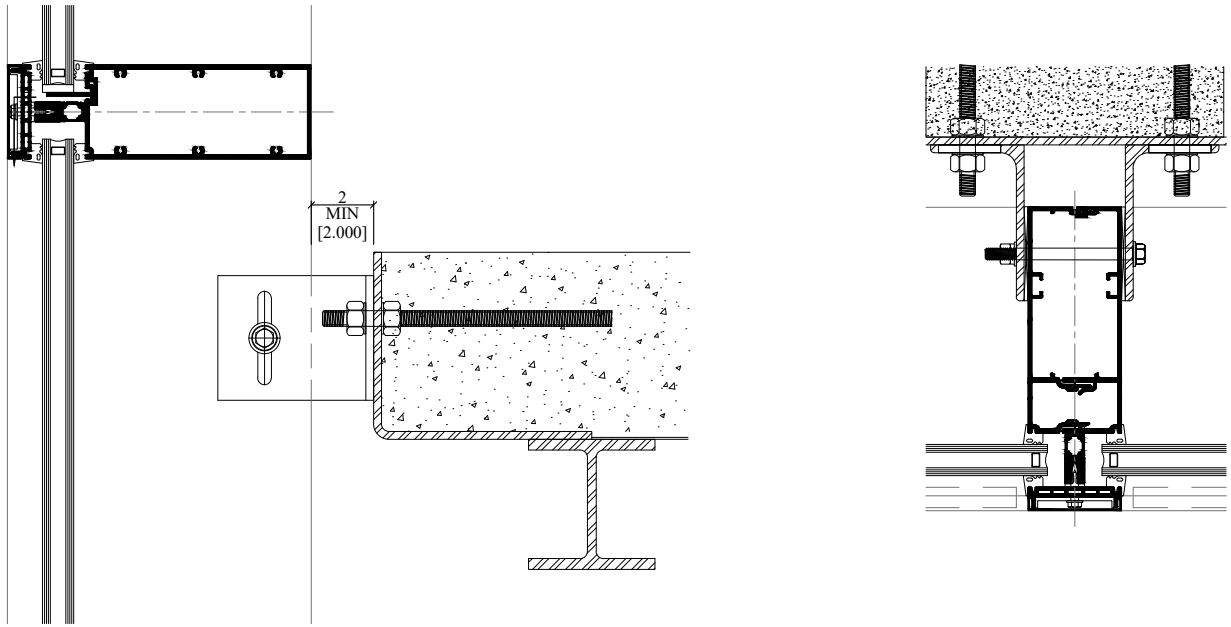


STANDARD ANCHORS

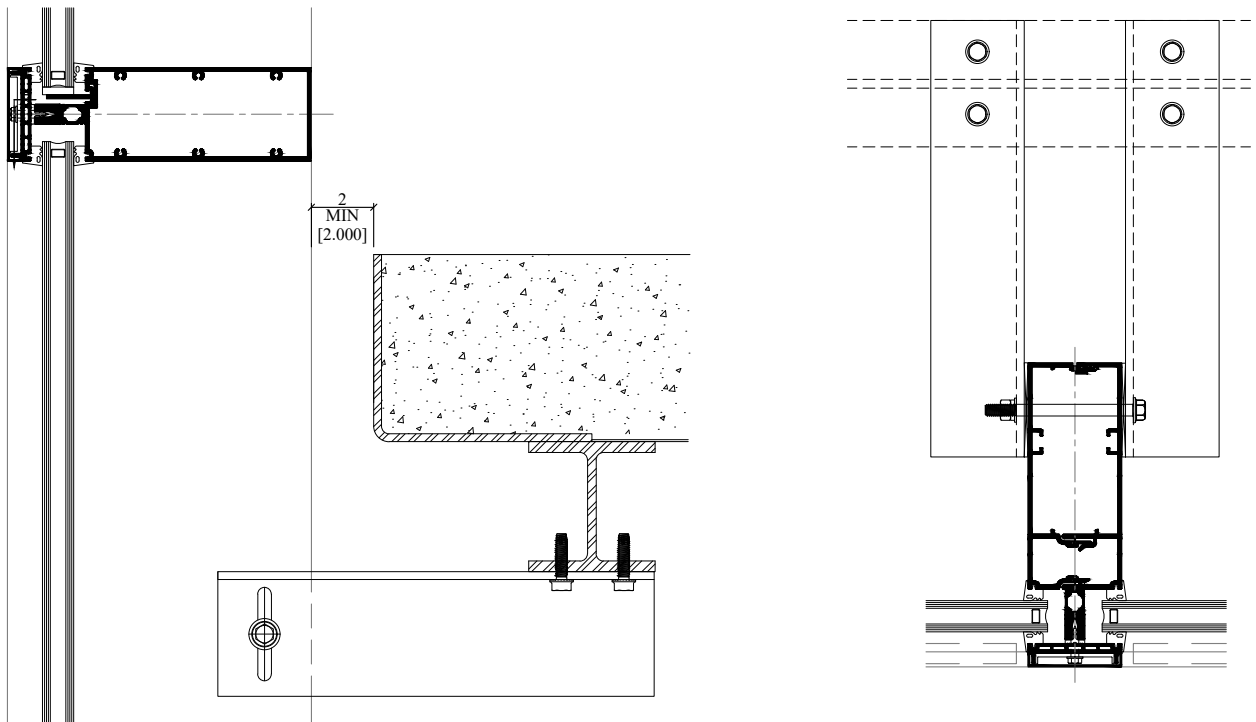
Laws and building and safety codes governing the design and use of glazed entrance, window, and curtain wall products vary widely. THERMTEK™ does not control the selection of product configurations, operating hardware, or glazing materials, and assumes no responsibility therefor.

THERMTEK™ reserves the right to change configuration without prior notice when deemed necessary for product improvement.
THERMTEK.COM

STANDARD ANCHORS



ANCHORING TO FLOOR SLAB

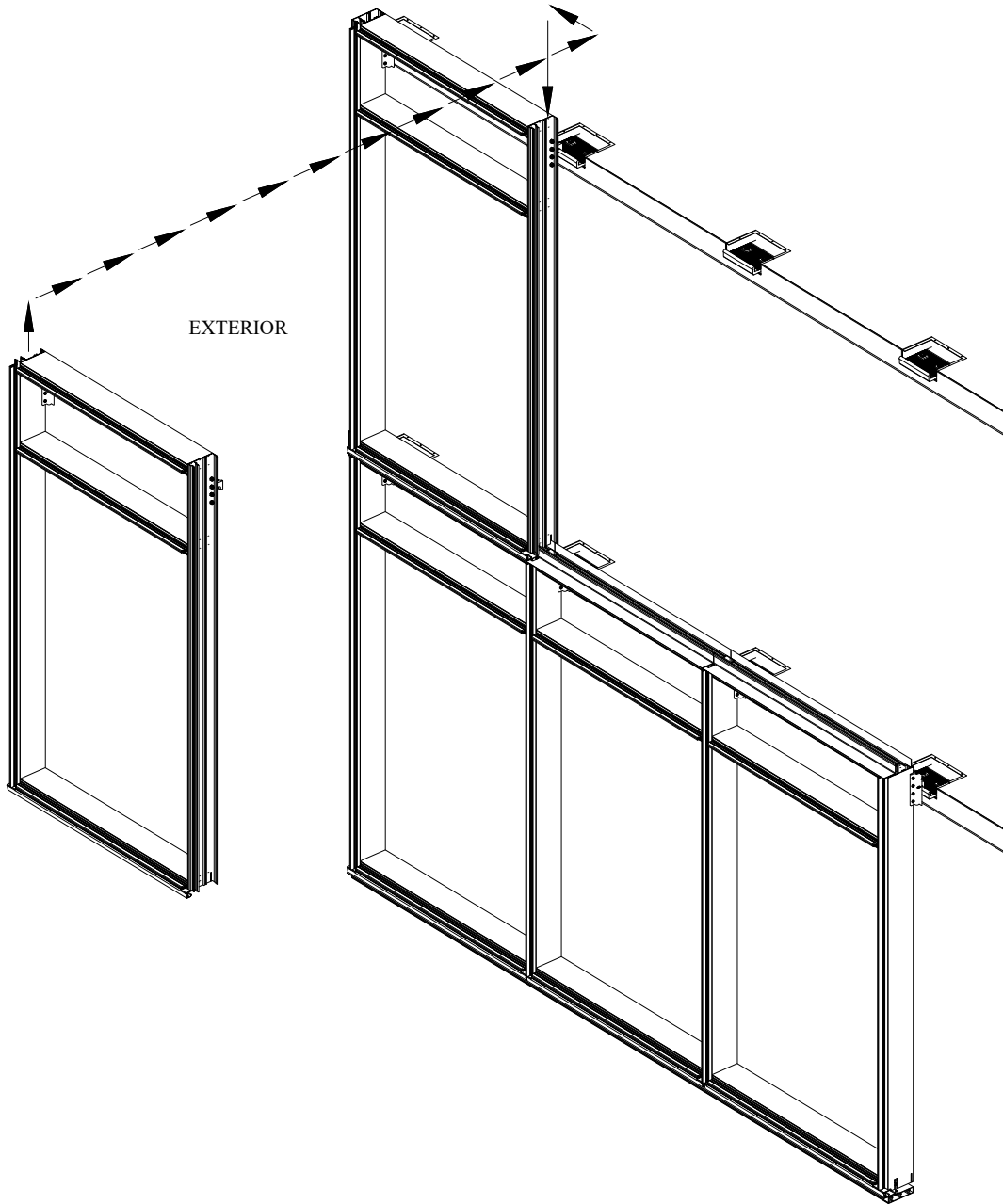


ANCHORING TO STEEL

Laws and building and safety codes governing the design and use of glazed entrance, window, and curtain wall products vary widely. THERMTEK™ does not control the selection of product configurations, operating hardware, or glazing materials, and assumes no responsibility therefor.

THERMTEK™ reserves the right to change configuration without prior notice when deemed necessary for product improvement.
THERMTEK.COM

PICTORIAL VIEW



EXTERIOR

OPTIONAL
ADJUSTABLE ANCHOR
(EMBEDS)

Laws and building and safety codes governing the design and use of glazed entrance, window, and curtain wall products vary widely. THERMTEK™ does not control the selection of product configurations, operating hardware, or glazing materials, and assumes no responsibility therefor.

THERMTEK™ reserves the right to change configuration without prior notice when deemed necessary for product improvement.

™THERMTEK.COM

ADJUSTABLE ANCHOR

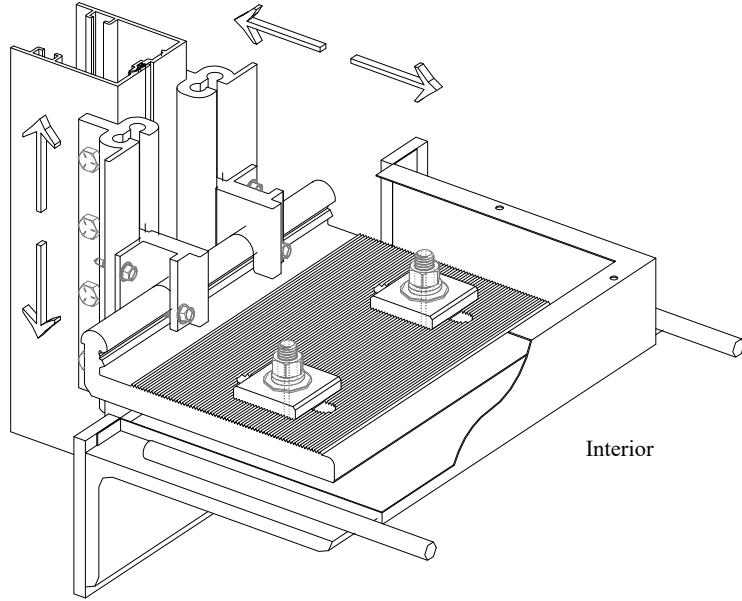
Additional information and CAD details are available at THERMTEK.COM

Laws and building and safety codes governing the design and use of glazed entrance, window, and curtain wall products vary widely. THERMTEK™ does not control the selection of product configurations, operating hardware, or glazing materials, and assumes no responsibility therefor.

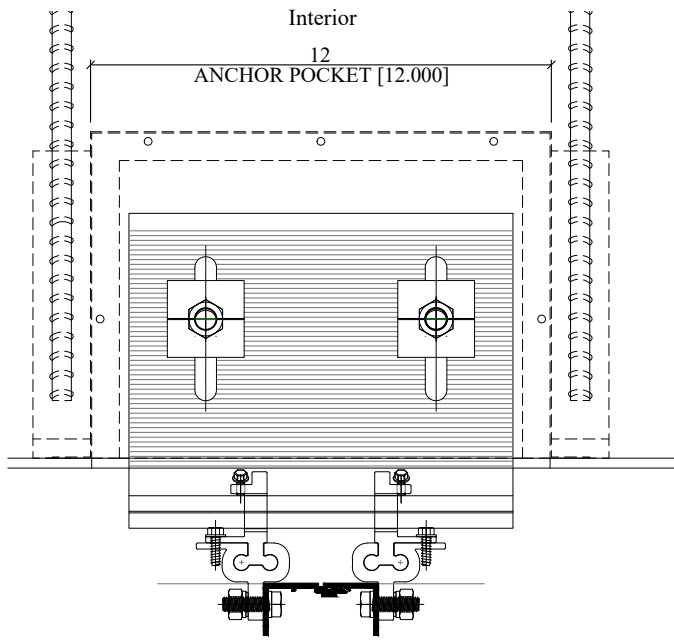
THERMTEK™ reserves the right to change configuration without prior notice when deemed necessary for product improvement.

THERMTEK.COM

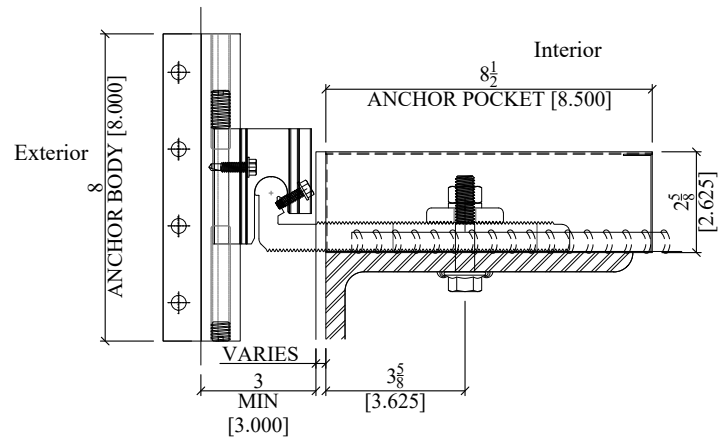
Exterior



Interior



Anchor Plan



Anchor Section

OPTIONAL ADJUSTABLE ANCHOR (EMBEDS)

Additional information and CAD details are available at THERMTEK.COM

WIND LOAD CHARTS

Mullions are designed for deflection limitations in accordance with AAMA TIR-A11 of L/175 up to 13'-6" and L/240 + $\frac{1}{4}$ " above 13'-6". These are for mullions WITH HORIZONTALS and are based on engineering calculations for stress and deflection. allowable wind load stress for 13,400psi PER THE 2020 ALUMINUM DESIGN MANUAL FOR 6063-T6 ALUMINUM AND AN UNBRACED LENGTH OF 120". Wind load charts contained herein are based upon nominal wind load utilized in allowable stress design. For special situations not covered by these, contact THERMTEK.COM.

Laws and building and safety codes governing the design and use of glazed entrance, window, and curtain wall products vary widely. THERMTEK™ does not control the selection of product configurations, operating hardware, or glazing materials, and assumes no responsibility therefor.

THERMTEK™ reserves the right to change configuration without prior notice when deemed necessary for product improvement.

™THERMTEK.COM

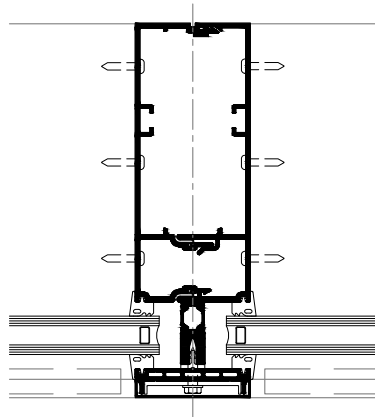
MULLION ANALYSIS

Additional information and CAD details are available at THERMTEK.COM

Laws and building and safety codes governing the design and use of glazed entrance, window, and curtain wall products vary widely. THERMTEK™ does not control the selection of product configurations, operating hardware, or glazing materials, and assumes no responsibility therefor.

THERMTEK™ reserves the right to change configuration without prior notice when deemed necessary for product improvement.

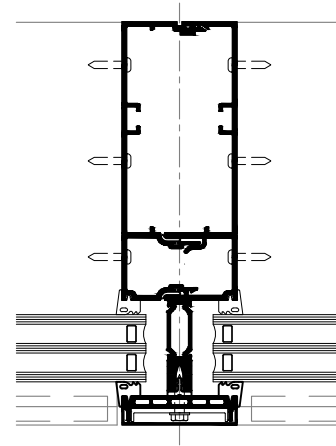
™THERMTEK.COM



846IBG273 846IBG277
CAPTURED STICK DOUBLE
GLAZED

$$I = 21.516 \text{ in}^4$$

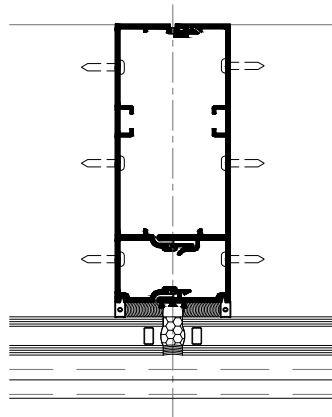
$$S = 5.153 \text{ in}^3$$



846IBG273 846IBG292
CAPTURED STICK TRIPLE
GLAZED

$$I = 21.516 \text{ in}^4$$

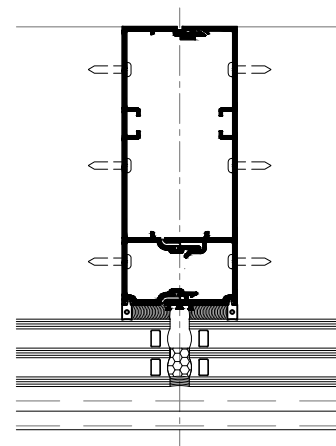
$$S = 5.153 \text{ in}^3$$



846IBG273 846IBG274
SSG STICK DOUBLE
GLAZED

$$I = 21.516 \text{ in}^4$$

$$S = 5.153 \text{ in}^3$$



846IBG273 846IBG274
SSG STICK TRIPLE
GLAZED

$$I = 21.516 \text{ in}^4$$

$$S = 5.153 \text{ in}^3$$

*INSTALLER NOTE: Installer is responsible for all required compatibility review and approvals with the structural silicone manufacturer and the insulating glass unit manufacturer.

MULLION ANALYSIS

Additional information and CAD details are available at THERMTEK.COM

Laws and building and safety codes governing the design and use of glazed entrance, window, and curtain wall products vary widely. THERMTEK™ does not control the selection of product configurations, operating hardware, or glazing materials, and assumes no responsibility therefor.

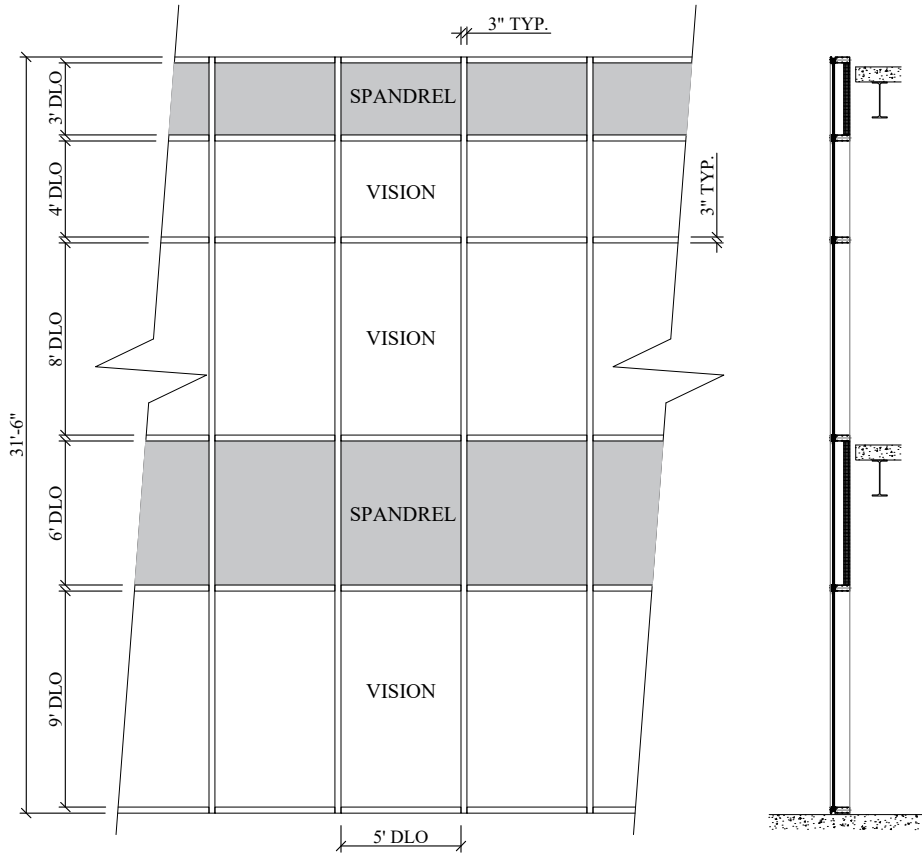
THERMTEK™ reserves the right to change configuration without prior notice when deemed necessary for product improvement.
THERMTEK.COM

Curtain Wall Frame No.	Condition	Mullion	Moment	Section	Span	Lb	Allowable Stress (ksi)	Tributary	Wind	Rmax	Mmax	Stress	Δaxt	Δaxl - N/175	Reinforcing				
		Shape #	of Inertia	Modulus	Height			Width	Load	Wind	Wind	in Al	Dimensions	Relative	Sx	Stress			
			(in4)	(in3)	(in)			(in)	(psf)	(kips)	(k-in)	(ksi)		(in)	(in)	(t)	(d)	lx (in4)	(in3)
CW Summary (Simple Spans)																			
10' Span	Interior	846IBG273/274	21.208	5.164	120.00	120.00	13.40	60.00	30.0	0.75	22.5	4.36	0.16	0.69	0	0.00000	0.00	0.00	0.00
	Interior	846IBG273/274	21.208	5.164	120.00	120.00	13.40	60.00	40.0	1.00	30.0	5.81	0.21	0.69	0	0.00000	0.00	0.00	0.00
	Interior	846IBG273/274	21.208	5.164	120.00	120.00	13.40	60.00	50.0	1.25	37.5	7.26	0.27	0.69	0	0.00000	0.00	0.00	0.00
	Interior	846IBG273/274	21.208	5.164	120.00	120.00	13.40	60.00	60.0	1.50	45.0	8.71	0.32	0.69	0	0.00000	0.00	0.00	0.00
	Interior	846IBG273/274	21.208	5.164	120.00	120.00	13.40	60.00	70.0	1.75	52.5	10.17	0.37	0.69	0	0.00000	0.00	0.00	0.00
	Interior	846IBG273/274	21.208	5.164	120.00	120.00	13.40	60.00	80.0	2.00	60.0	11.62	0.42	0.69	0	0.00000	0.00	0.00	0.00
	Interior	846IBG273/274	21.208	5.164	120.00	120.00	13.40	60.00	90.0	2.25	67.5	13.07	0.48	0.69	0	0.00000	0.00	0.00	0.00
12' Span	Interior	846IBG273/274	21.208	5.164	144.00	120.00	13.40	60.00	30.0	0.90	32.4	6.27	0.33	0.82	0	0.00000	0.00	0.00	0.00
	Interior	846IBG273/274	21.208	5.164	144.00	120.00	13.40	60.00	40.0	1.20	43.2	8.37	0.44	0.82	0	0.00000	0.00	0.00	0.00
	Interior	846IBG273/274	21.208	5.164	144.00	120.00	13.40	60.00	50.0	1.50	54.0	10.46	0.55	0.82	0	0.00000	0.00	0.00	0.00
	Interior	846IBG273/274	21.208	5.164	144.00	120.00	13.40	60.00	60.0	1.80	64.8	12.55	0.66	0.82	0	0.00000	0.00	0.00	0.00
	Interior	846IBG273/274	21.208	5.164	144.00	120.00	13.40	60.00	70.0	2.10	75.6	14.64	0.77	0.82	5/8	5.00000	18.88	2.60	13.67
	Interior	846IBG273/274	21.208	5.164	144.00	120.00	13.40	60.00	80.0	2.40	86.4	16.73	0.88	0.82	5/8	5.00000	18.88	2.60	15.63
	Interior	846IBG273/274	21.208	5.164	144.00	120.00	13.40	60.00	90.0	2.70	97.2	18.82	0.99	0.82	5/8	5.00000	18.88	2.60	17.58
14' Span	Interior	846IBG273/274	21.208	5.164	168.00	120.00	13.40	60.00	30.0	1.05	44.1	8.54	0.61	0.95	0	0.00000	0.00	0.00	0.00
	Interior	846IBG273/274	21.208	5.164	168.00	120.00	13.40	60.00	40.0	1.40	58.8	11.39	0.82	0.95	0	0.00000	0.00	0.00	0.00
	Interior	846IBG273/274	21.208	5.164	168.00	120.00	13.40	60.00	50.0	1.75	73.5	14.24	0.99	0.95	5/8	5.00000	18.88	2.60	13.29
	Interior	846IBG273/274	21.208	5.164	168.00	120.00	13.40	60.00	60.0	2.10	88.2	17.09	1.16	0.95	5/8	5.00000	18.88	2.60	15.95
	Interior	846IBG273/274	21.208	5.164	168.00	120.00	13.40	60.00	70.0	2.45	102.9	19.94	1.33	0.95	5/8	5.00000	18.88	2.60	18.61
	Interior	846IBG273/274	21.208	5.164	168.00	120.00	13.40	60.00	80.0	2.80	117.6	22.79	1.50	0.95	5/8	5.00000	18.88	2.60	21.27
	Interior	846IBG273/274	21.208	5.164	168.00	120.00	13.40	60.00	90.0	3.15	132.3	25.64	1.67	0.95	1	5.00000	30.21	4.17	18.66
16' Span	Interior	846IBG273/274	21.208	5.164	192.00	120.00	13.40	60.00	30.0	1.20	57.6	11.15	1.04	1.05	0	0.00000	0.00	0.00	0.00
	Interior	846IBG273/274	21.208	5.164	192.00	120.00	13.40	60.00	40.0	1.60	76.8	14.93	0.74	1.05	5/8	5.00000	18.88	2.60	13.89
	Interior	846IBG273/274	21.208	5.164	192.00	120.00	13.40	60.00	50.0	2.00	96.0	18.71	0.92	1.05	5/8	5.00000	18.88	2.60	17.36
	Interior	846IBG273/274	21.208	5.164	192.00	120.00	13.40	60.00	60.0	2.40	115.2	22.49	1.01	1.05	3/4	5.00000	22.66	3.13	19.04
	Interior	846IBG273/274	21.208	5.164	192.00	120.00	13.40	60.00	70.0	2.80	134.4	26.27	1.00	1.05	1	5.00000	30.21	4.17	18.95
	Interior	846IBG273/274	21.208	5.164	192.00	120.00	13.40	60.00	80.0	3.20	153.6	29.99	0.94	1.05	See Note 1		41.81	6.17	16.52
1. Reinforcing is a 1"x5" # a 3/4"x4" Bar																			
20' Span	Interior	846IBG273/274	21.208	5.164	240.00	120.00	13.40	60.00	30.0	1.50	90.0	8.43	1.23	1.25	3/4	5.00000	22.66	3.13	14.88
	Interior	846IBG273/274	21.208	5.164	240.00	120.00	13.40	60.00	40.0	2.00	120.0	7.82	1.14	1.25	See Note 1		41.81	6.17	12.90
1. Reinforcing is a 1"x5" # a 3/4"x4" Bar																			

*INSTALLER NOTE: Installer is responsible for all required compatibility review and approvals with the structural silicone manufacturer and the insulating glass unit manufacturer.

THERMAL CHARTS

GENERIC PROJECT SPECIFIED U-FACTOR EXAMPLE CALCULATION
 (Percent of glass vary on specific products depending on sitelines)
 (Based on single bay of curtain wall)



Vision Area

- Example Glass U-factor = 0.20 Btu/(ft² · h · °F)
- Vision Area = 5(9+8+4) = 105.0ft²
- Total Area (Vision) = 5'-3" (9'-4 1/2"+8'-3"+4'-3") = 114.84ft²
- Percentage of vision glass = (Vision Area ÷ Total Area) 100
 = (105÷114.84)100 =91.4%

Spandrel Area

- Example Spandrel R-value = 15 (ft² · h · °F)/Btu
- Spandrel Area = 5(6+3) = 45ft²
- Total Area (Spandrel) = 5'-3" (6'-3"+3'-3") = 49.875ft²
- Percentage of Spandrel = (Spandrel Area ÷ Total Area)100
 = (45÷49.875)100 =90.2%

Laws and building and safety codes governing the design and use of glazed entrance, window, and curtain wall products vary widely. THERMTEK™ does not control the selection of product configurations, operating hardware, or glazing materials, and assumes no responsibility therefor.

THERMTEK™ reserves the right to change configuration without prior notice when deemed necessary for product improvement.

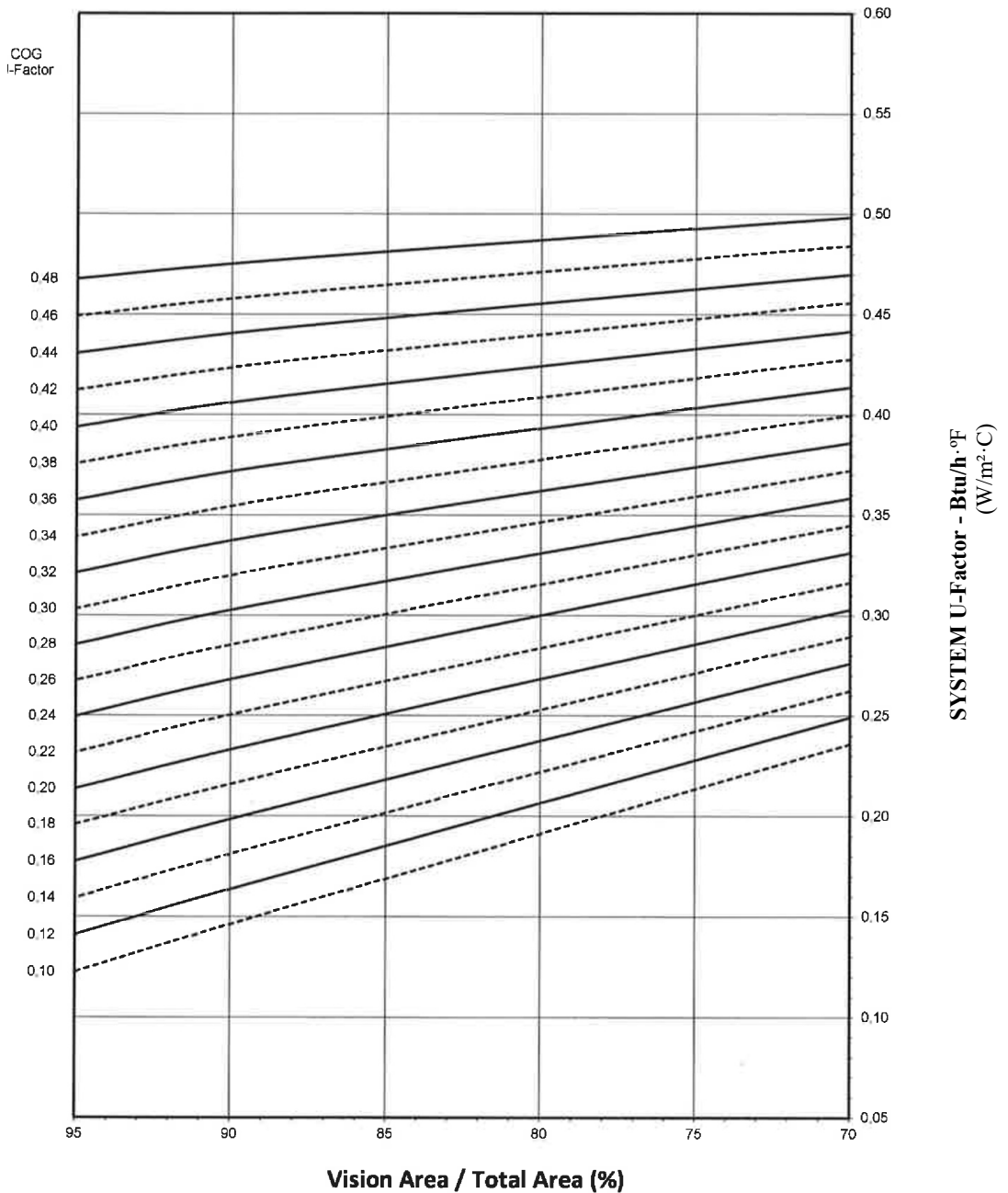
THERMTEK.COM

THERMAL CHARTS

**4 SIDED CAPTURED
1" DOUBLE GLAZED - WARM EDGE GLASS SPACER**

Note:
Values in parentheses are metric.
COG = Center of glass.
Charts are generated per AAMA 507

SYSTEM U-FACTOR vs PERCENT OF GLASS AREA



Notes for system U-factor, SHGC and VT charts:
For glass values that are not listed, linear interpolation is permitted.
Glass properties are based on center of glass values and are obtained from your glass supplier.

Laws and building and safety codes governing the design and use of glazed entrance, window, and curtain wall products vary widely. THERMTEK™ does not control the selection of product configurations, operating hardware, or glazing materials, and assumes no responsibility therefor.

THERMTEK™ reserves the right to change configuration without prior notice when deemed necessary for product improvement.

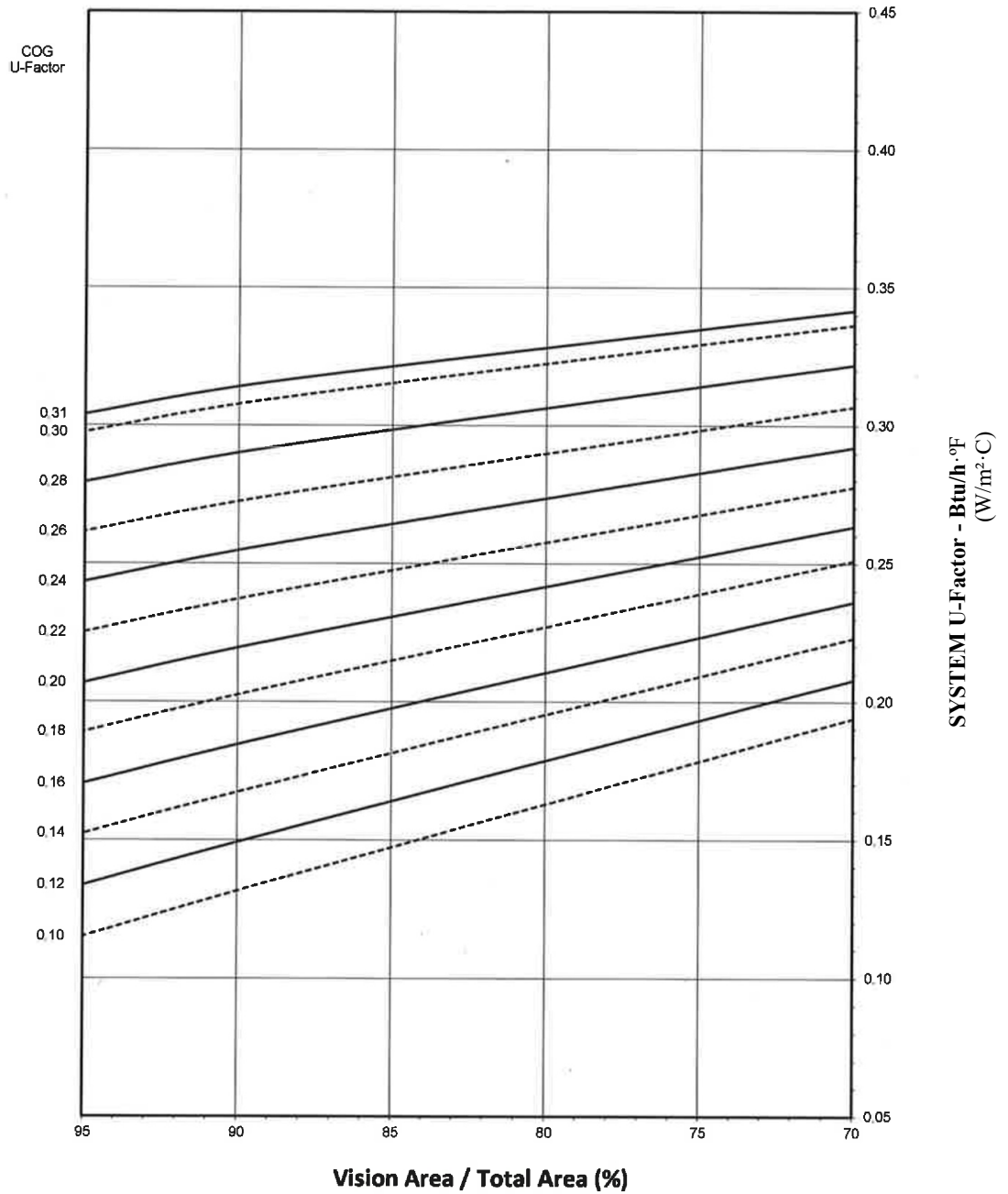
™THERMTEK.COM

THERMAL CHARTS

**4 SIDED CAPTURED
1 3/4" TRIPLE GLAZED - WARM EDGE GLASS SPACER**

Note:
Values in parentheses are metric.
COG = Center of glass.
Charts are generated per AAMA 507

SYSTEM U-FACTOR vs PERCENT OF GLASS AREA

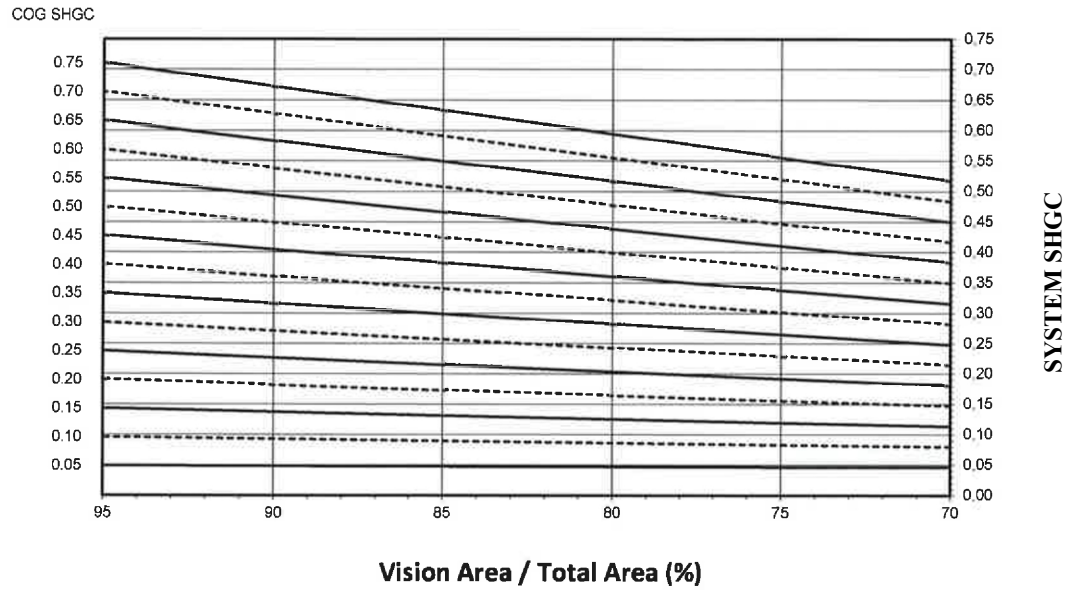


Notes for system U-factor, SHGC and VT charts:
For glass values that are not listed, linear interpolation is permitted.
Glass properties are based on center of glass values and are obtained from your glass supplier.

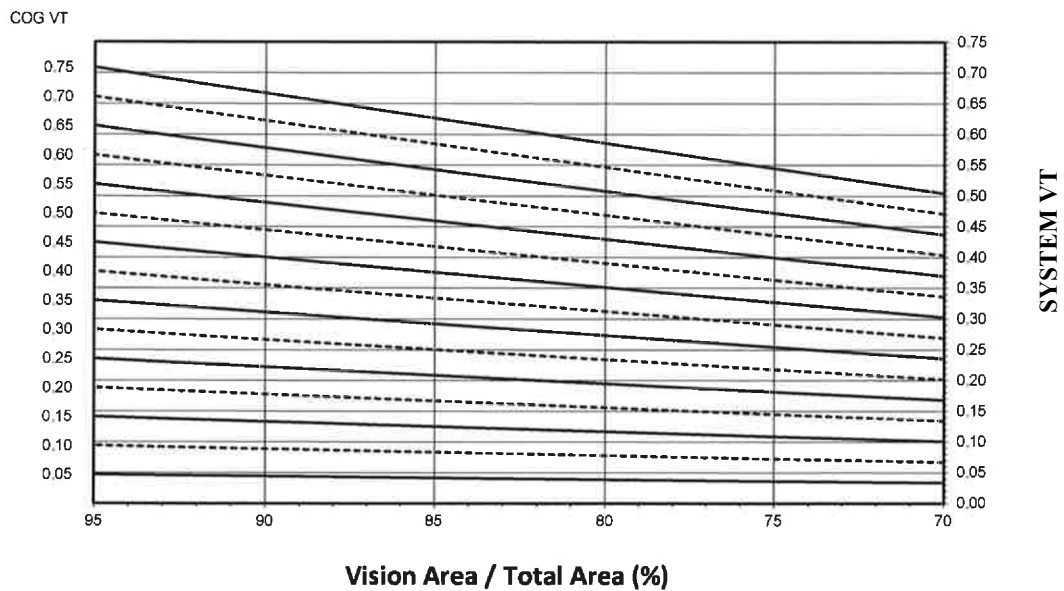
THERMAL CHARTS

4 SIDED CAPTURED
1" DOUBLE GLAZED - WARM EDGE GLASS SPACER

SYSTEM SOLAR HEAT GAIN COEFFICIENT (SHGC) vs. PERCENT OF VISION AREA



SYSTEM VISIBLE TRANSMITTANCE (VT) vs. PERCENT OF VISION AREA

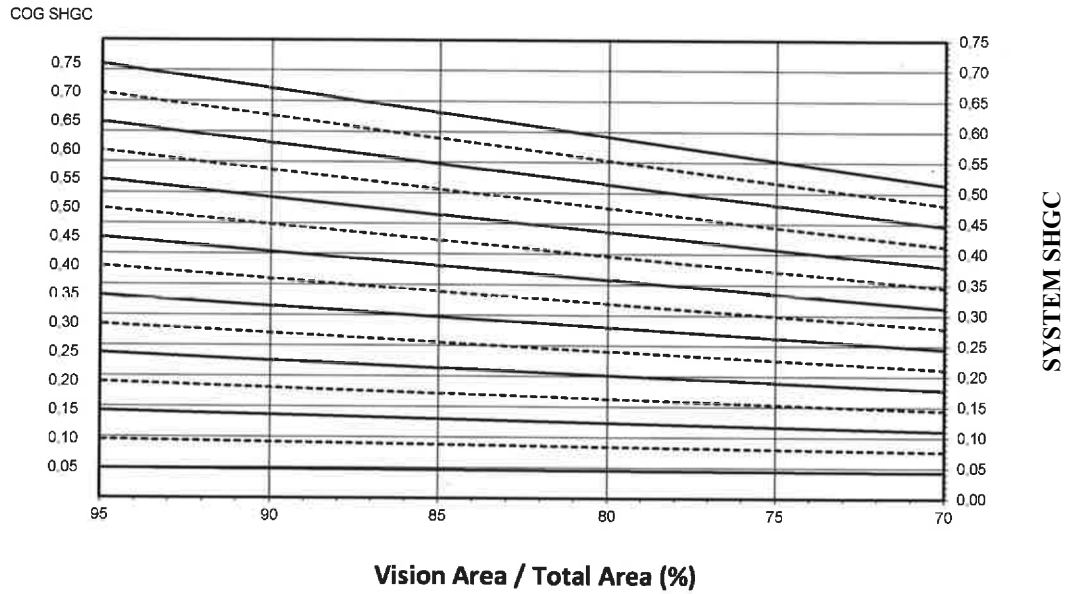


CHARTS ARE GENERATED PER AAMA 507

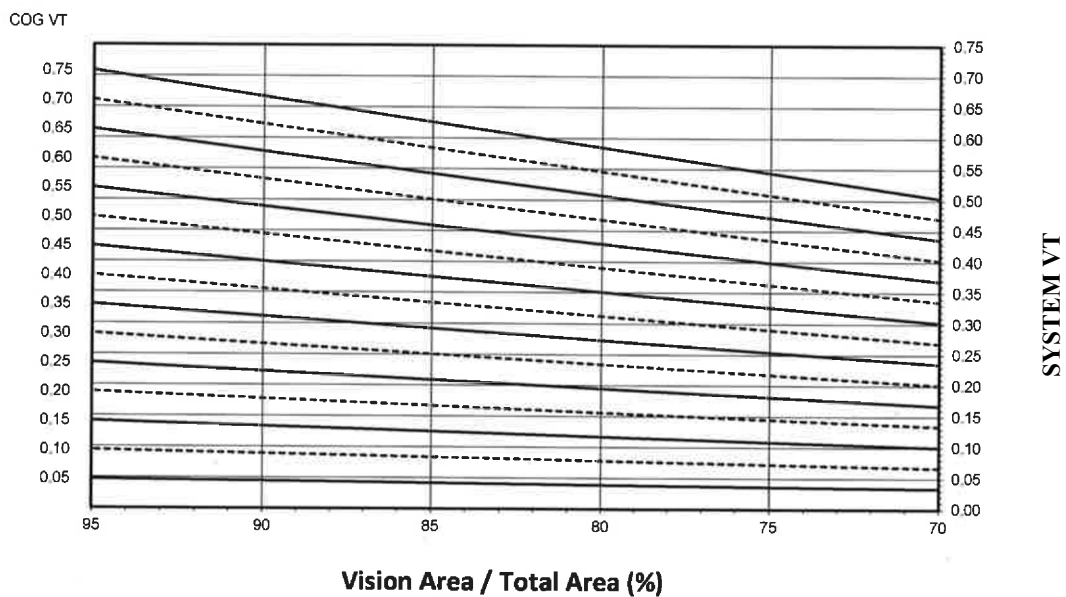
THERMAL CHARTS

4 SIDED CAPTURED
1 3/4" TRIPLE GLAZED - WARM EDGE GLASS SPACER

SYSTEM SOLAR HEAT GAIN COEFFICIENT (SHGC) vs. PERCENT OF VISION AREA



SYSTEM VISIBLE TRANSMITTANCE (VT) vs. PERCENT OF VISION AREA



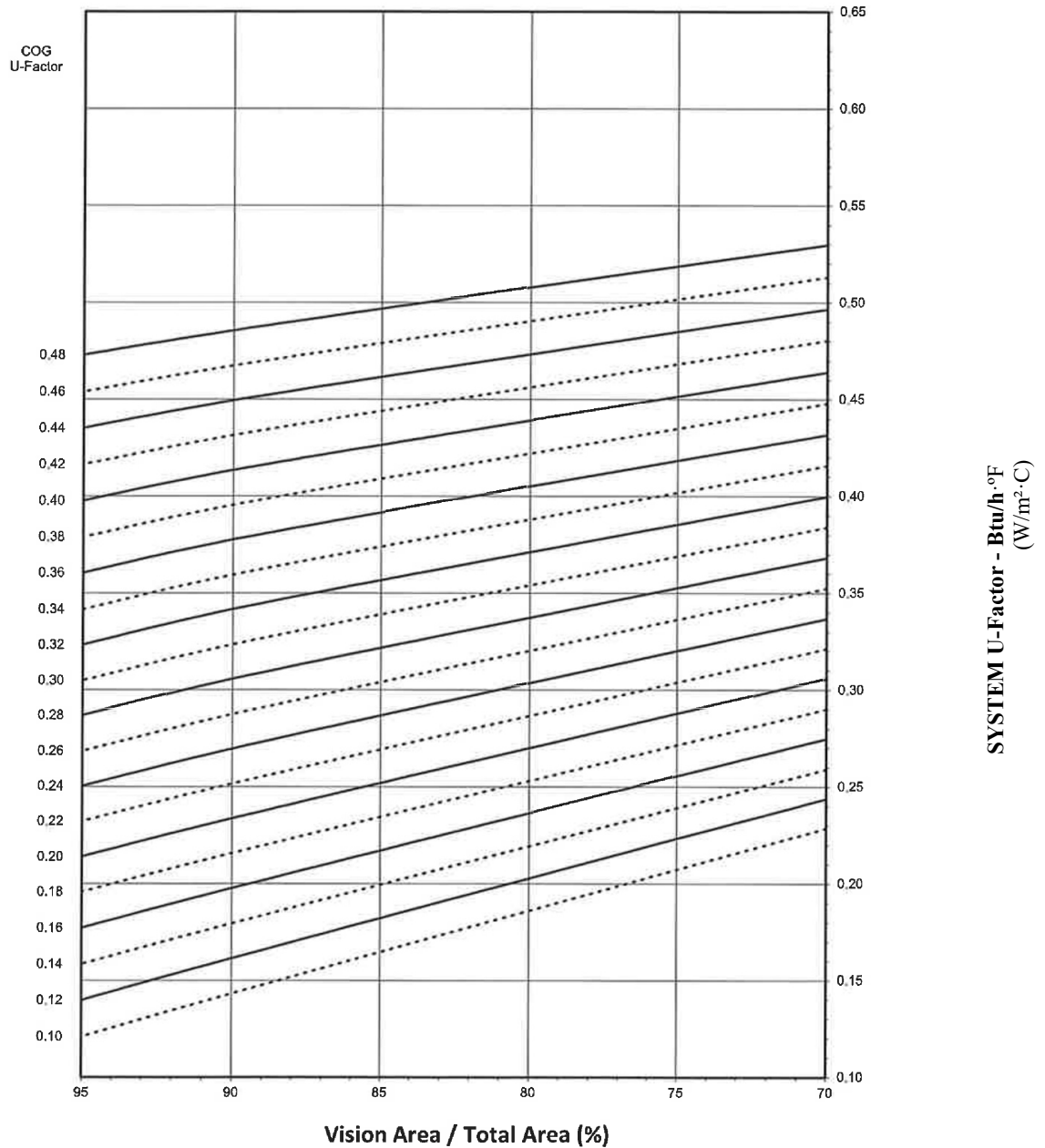
CHARTS ARE GENERATED PER AAMA 507

THERMAL CHARTS

**VERTICAL SSG
1" DOUBLE GLAZED - WARM EDGE GLASS SPACER**

Note:
Values in parentheses are metric.
COG = Center of glass.
Charts are generated per AAMA 507

SYSTEM U-FACTOR vs PERCENT OF GLASS AREA



Laws and building and safety codes governing the design and use of glazed entrance, window, and curtain wall products vary widely. THERMTEK™ does not control the selection of product configurations, operating hardware, or glazing materials, and assumes no responsibility therefor.

THERMTEK™ reserves the right to change configuration without prior notice when deemed necessary for product improvement.
THERMTEK.COM

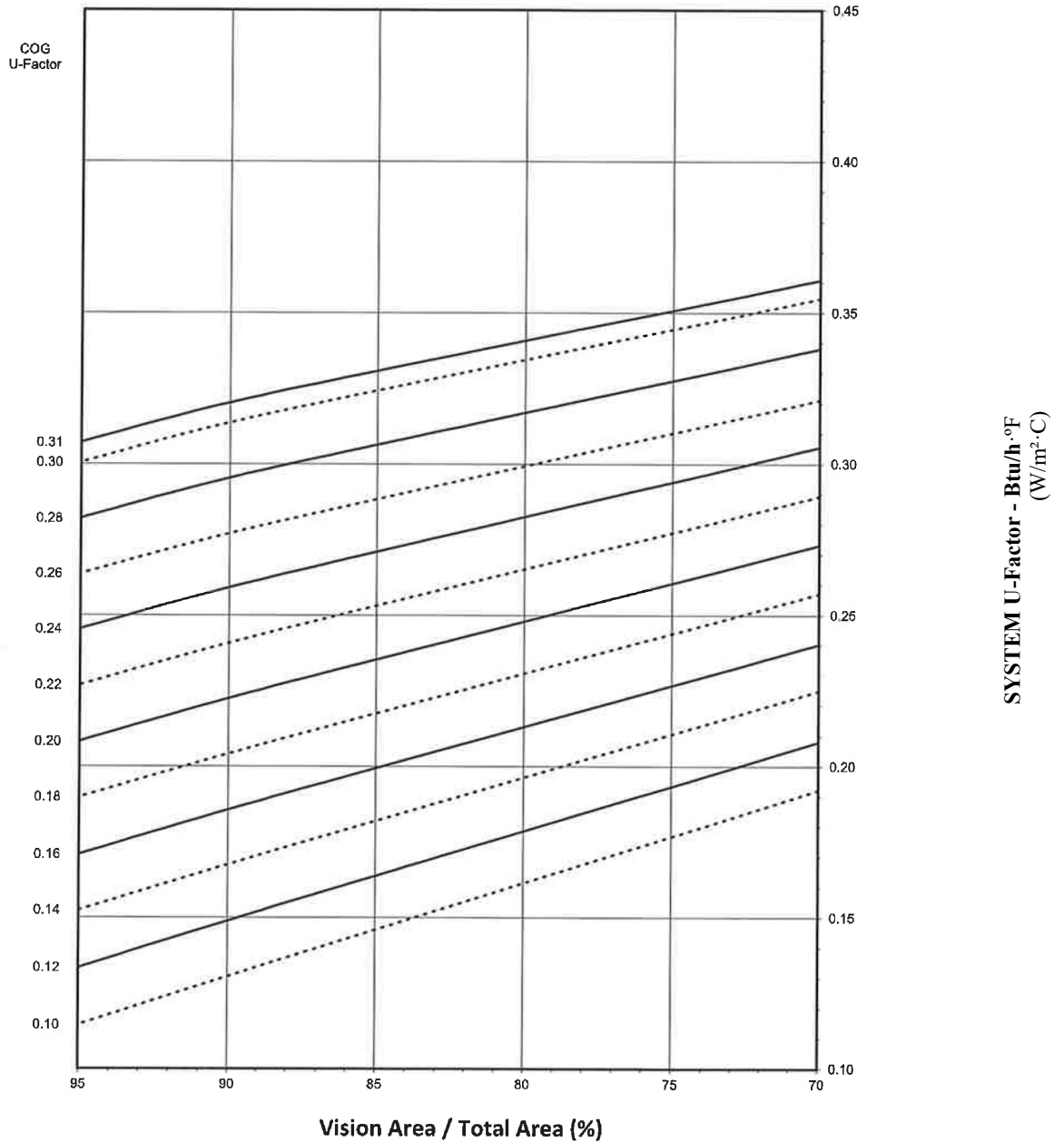
Notes for system U-factor, SHGC and VT charts:
For glass values that are not listed, linear interpolation is permitted.
Glass properties are based on center of glass values and are obtained from your glass supplier.

THERMAL CHARTS

**VERTICAL SSG
1 3/4" TRIPLE GLAZED - WARM EDGE GLASS SPACER**

Note:
Values in parentheses are metric.
COG = Center of glass.
Charts are generated per AAMA 507

SYSTEM U-FACTOR vs PERCENT OF GLASS AREA



Notes for system U-factor, SHGC and VT charts:
For glass values that are not listed, linear interpolation is permitted.
Glass properties are based on center of glass values and are obtained from your glass supplier.

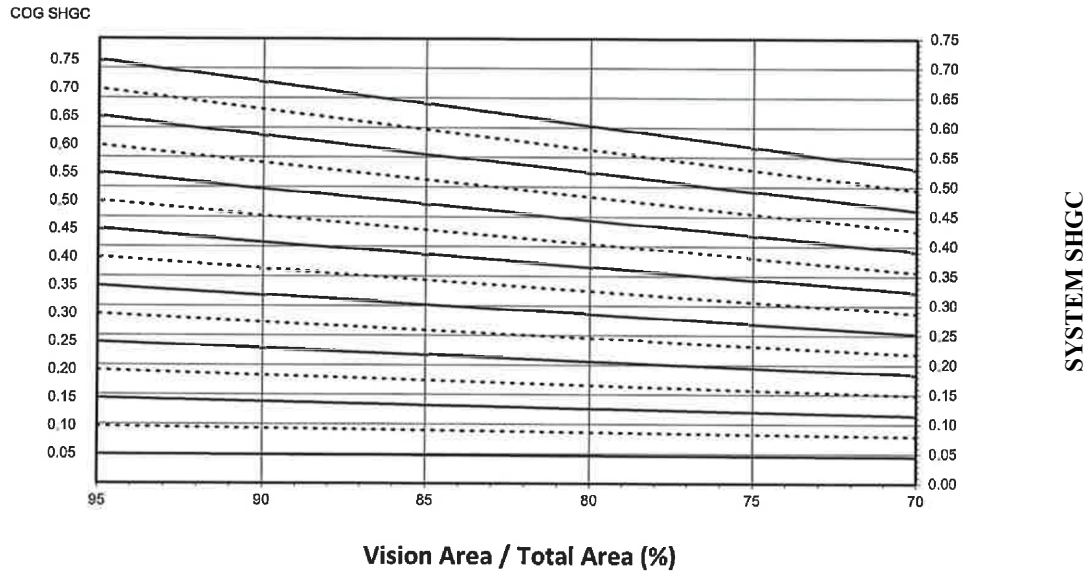
Laws and building and safety codes governing the design and use of glazed entrance, window, and curtain wall products vary widely. THERMTEK™ does not control the selection of product configurations, operating hardware, or glazing materials, and assumes no responsibility therefor.

THERMTEK™ reserves the right to change configuration without prior notice when deemed necessary for product improvement.
THERMTEK.COM

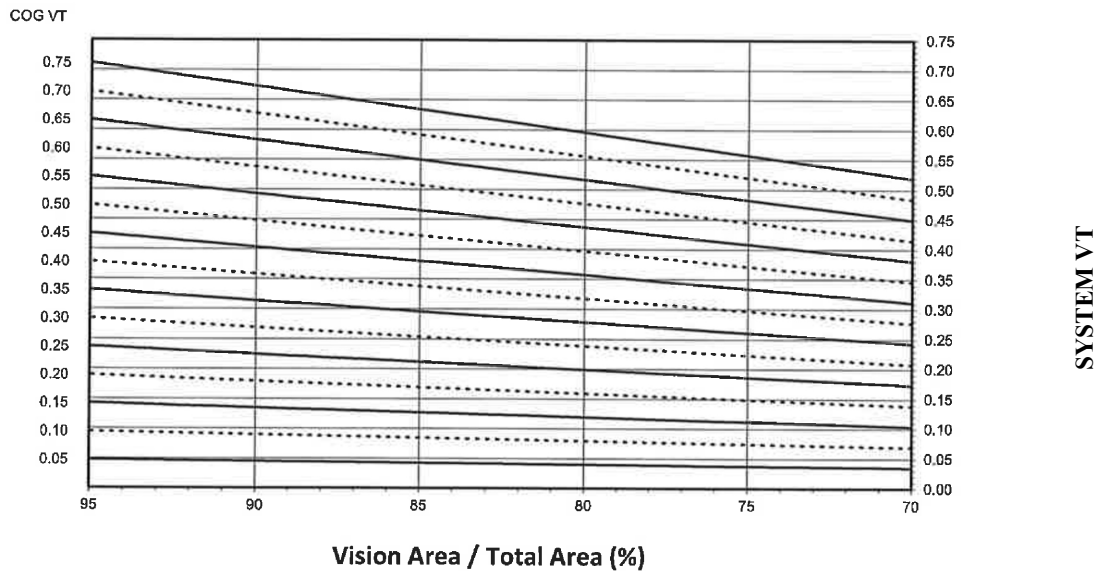
THERMAL CHARTS

**VERTICAL SSG
1" DOUBLE GLAZED - WARM EDGE GLASS SPACER**

SYSTEM SOLAR HEAT GAIN COEFFICIENT (SHGC) vs. PERCENT OF VISION AREA



SYSTEM VISIBLE TRANSMITTANCE (VT) vs. PERCENT OF VISION AREA



CHARTS ARE GENERATED PER AAMA 507

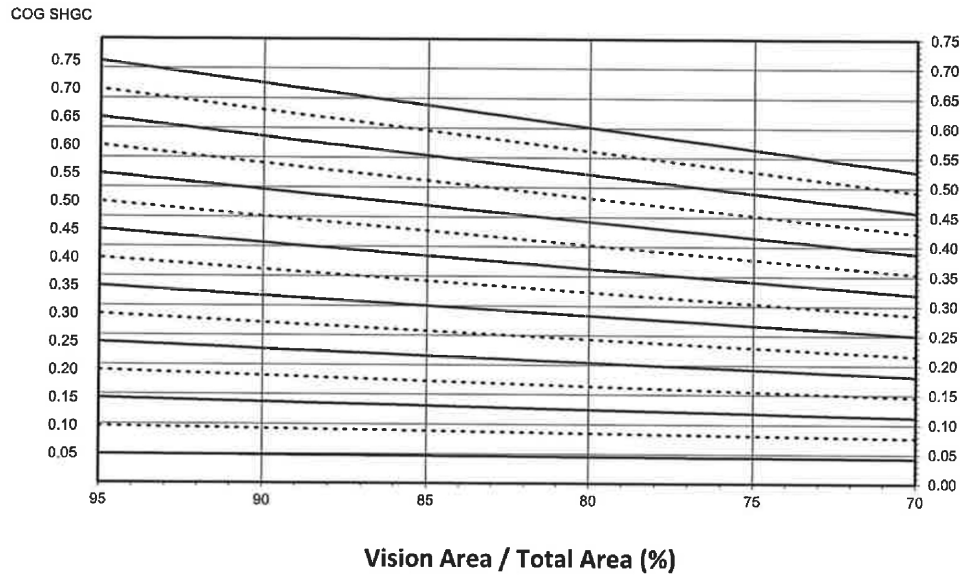
Laws and building and safety codes governing the design and use of glazed entrance, window, and curtain wall products vary widely. THERMTEK™ does not control the selection of product configurations, operating hardware, or glazing materials, and assumes no responsibility therefor.

THERMTEK™ reserves the right to change configuration without prior notice when deemed necessary for product improvement.
™THERMTEK.COM

THERMAL CHARTS

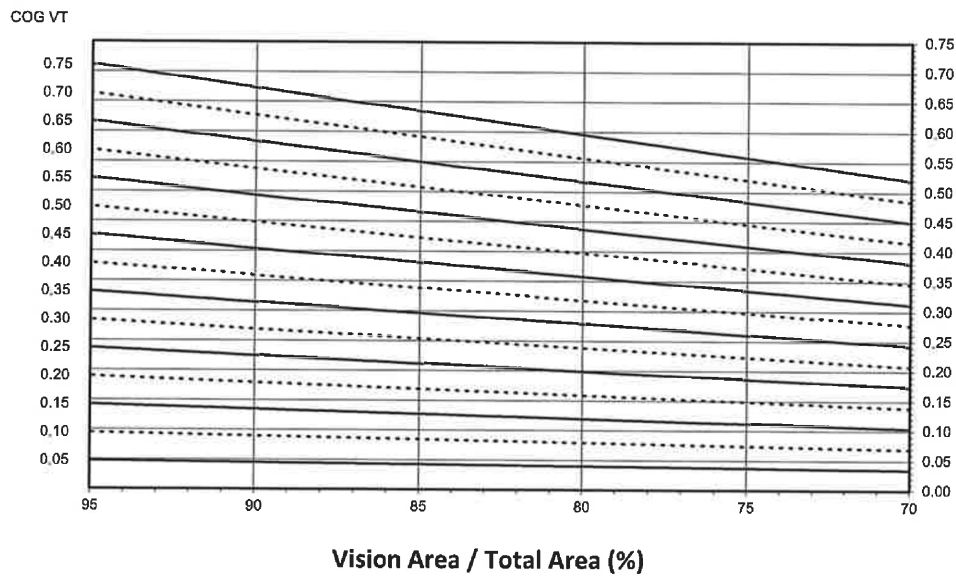
VERTICAL SSG 1 3/4" TRIPLE GLAZED - WARM EDGE GLASS SPACER

SYSTEM SOLAR HEAT GAIN COEFFICIENT (SHGC) vs. PERCENT OF VISION AREA



SYSTEM SHGC

SYSTEM VISIBLE TRANSMITTANCE (VT) vs. PERCENT OF VISION AREA



SYSTEM VT

CHARTS ARE GENERATED PER AAMA 507

Laws and building and safety codes governing the design and use of glazed entrance, window, and curtain wall products vary widely. THERMTEK™ does not control the selection of product configurations, operating hardware, or glazing materials, and assumes no responsibility therefor.

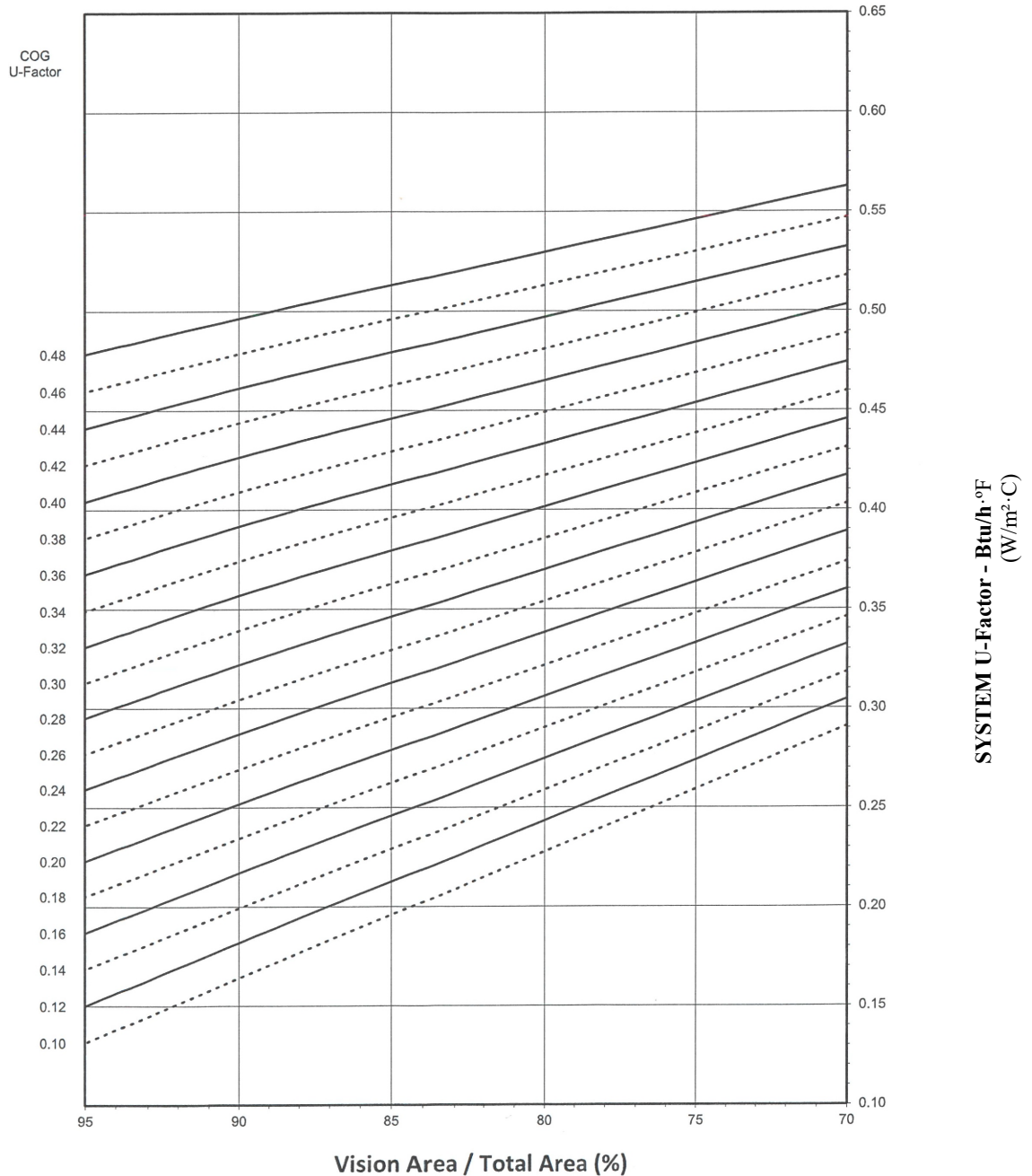
THERMTEK™ reserves the right to change configuration without prior notice when deemed necessary for product improvement.
THERMTEK.COM

THERMAL CHARTS

**HORIZONTAL SSG
1" DOUBLE GLAZED - WARM EDGE GLASS SPACER**

Note:
 Values in parentheses are metric.
 COG = Center of glass.
 Charts are generated per AAMA 507

SYSTEM U-FACTOR vs PERCENT OF GLASS AREA



Laws and building and safety codes governing the design and use of glazed entrance, window, and curtain wall products vary widely. THERMTEK™ does not control the selection of product configurations, operating hardware, or glazing materials, and assumes no responsibility therefor.

THERMTEK™ reserves the right to change configuration without prior notice when deemed necessary for product improvement.

THERMTEK.COM

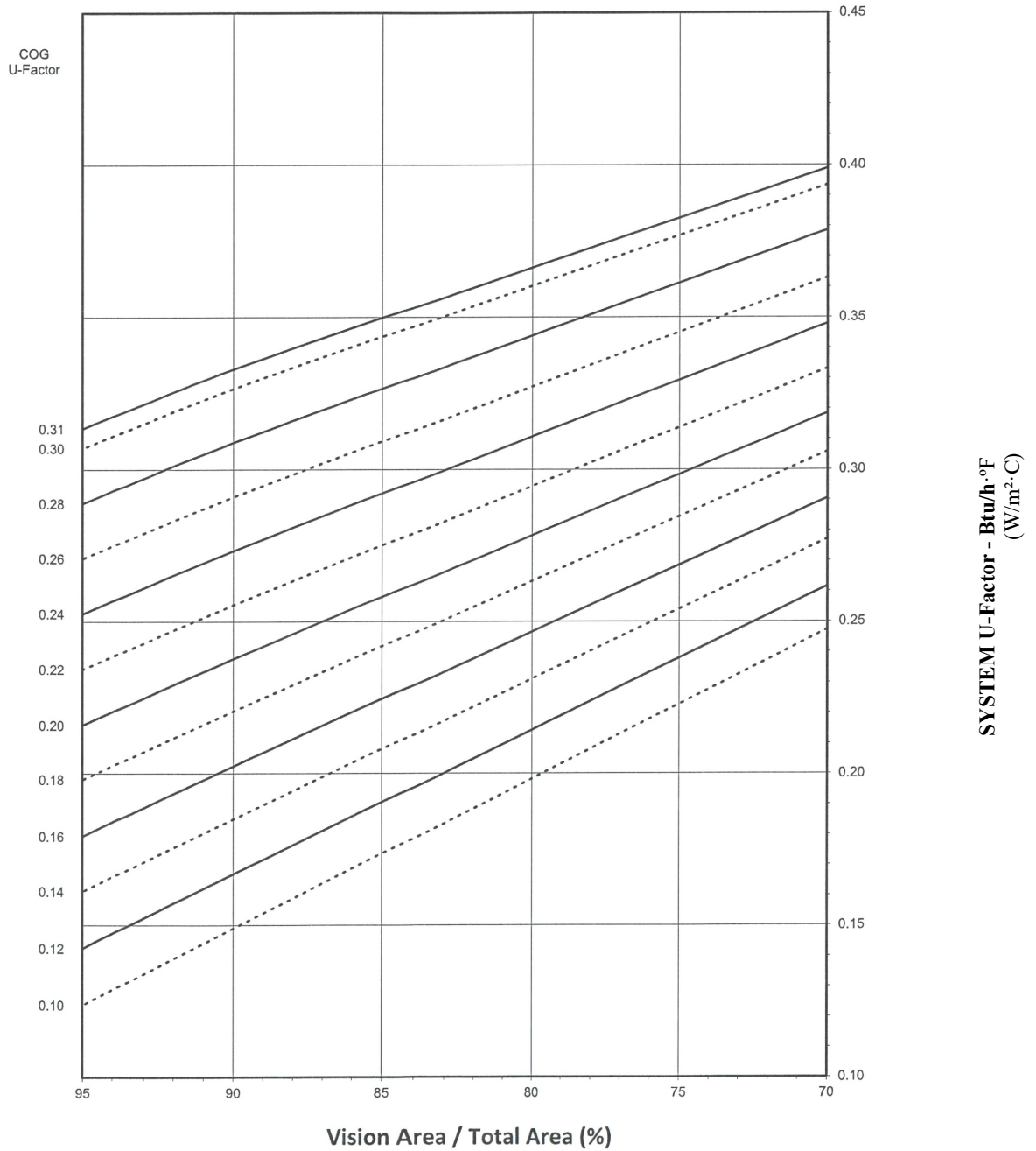
Notes for system U-factor, SHGC and VT charts:
 For glass values that are not listed, linear interpolation is permitted.
 Glass properties are based on center of glass values and are obtained from your glass supplier.

THERMAL CHARTS

**HORIZONTAL SSG
1 3/4" TRIPLE GLAZED - WARM EDGE GLASS SPACER**

Note:
 Values in parentheses are metric.
 COG = Center of glass.
 Charts are generated per AAMA 507

SYSTEM U-FACTOR vs PERCENT OF GLASS AREA



Notes for system U-factor, SHGC and VT charts:
 For glass values that are not listed, linear interpolation is permitted.
 Glass properties are based on center of glass values and are obtained from your glass supplier.

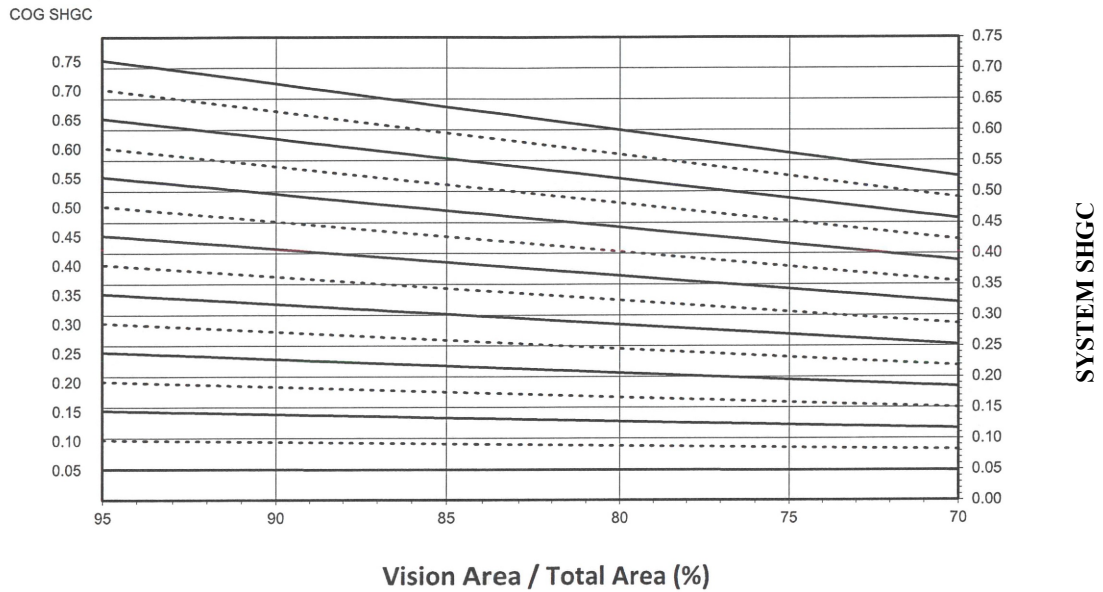
Laws and building and safety codes governing the design and use of glazed entrance, window, and curtain wall products vary widely. THERMTEK™ does not control the selection of product configurations, operating hardware, or glazing materials, and assumes no responsibility therefor.

THERMTEK™ reserves the right to change configuration without prior notice when deemed necessary for product improvement.
 THERMTEK.COM

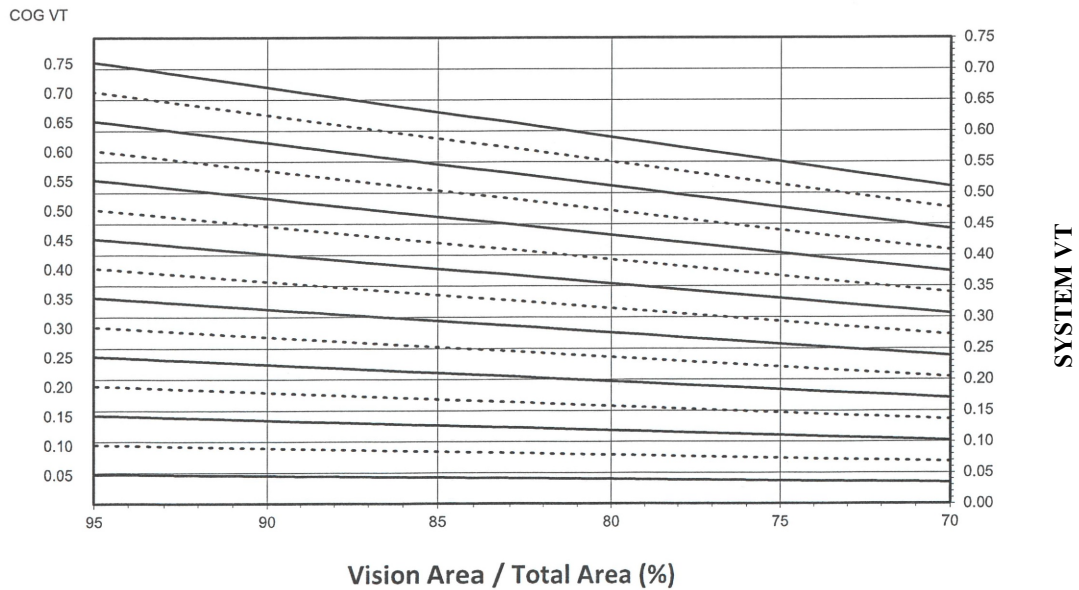
THERMAL CHARTS

**HORIZONTAL SSG
1" DOUBLE GLAZED - WARM EDGE GLASS SPACER**

SYSTEM SOLAR HEAT GAIN COEFFICIENT (SHGC) vs. PERCENT OF VISION AREA



SYSTEM VISIBLE TRANSMITTANCE (VT) vs. PERCENT OF VISION AREA



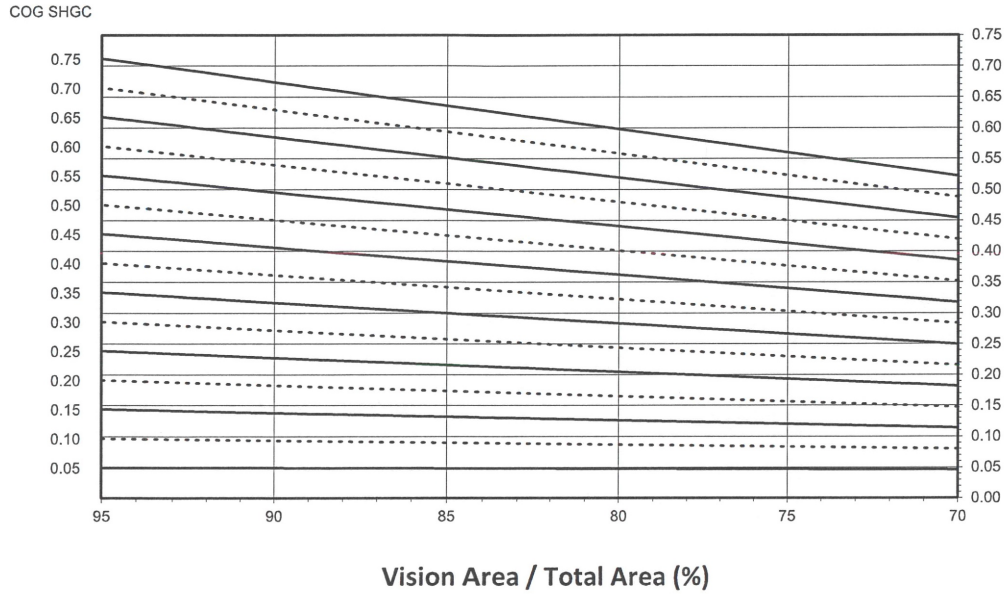
CHARTS ARE GENERATED PER AAMA 507

THERMAL CHARTS

HORIZONTAL SSG

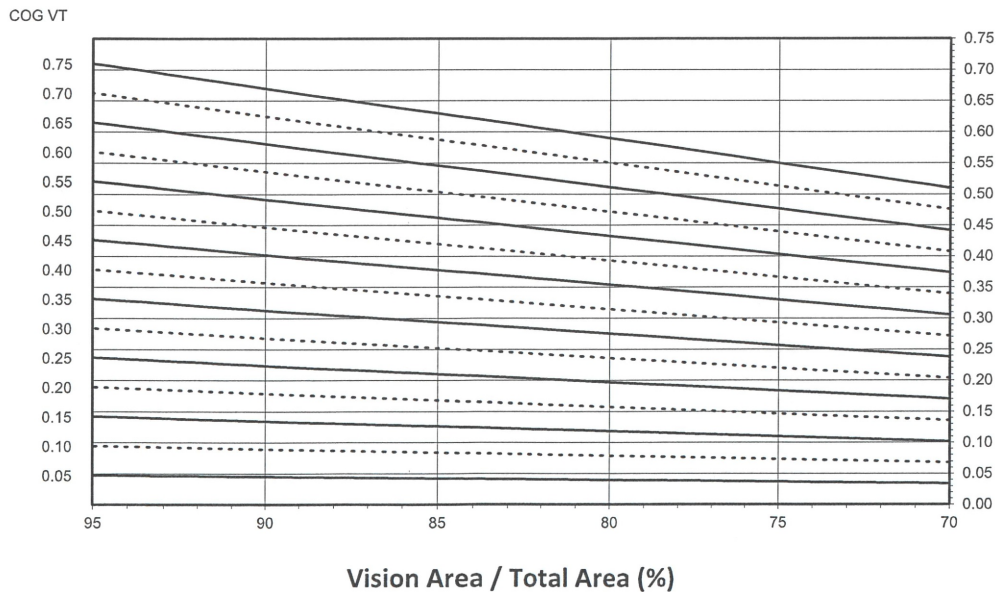
1 3/4" TRIPLE GLAZED - WARM EDGE GLASS SPACER

SYSTEM SOLAR HEAT GAIN COEFFICIENT (SHGC) vs. PERCENT OF VISION AREA



SYSTEM SHGC

SYSTEM VISIBLE TRANSMITTANCE (VT) vs. PERCENT OF VISION AREA



SYSTEM VT

CHARTS ARE GENERATED PER AAMA 507

Laws and building and safety codes governing the design and use of glazed entrance, window, and curtain wall products vary widely. THERMTEK™ does not control the selection of product configurations, operating hardware, or glazing materials, and assumes no responsibility therefor.

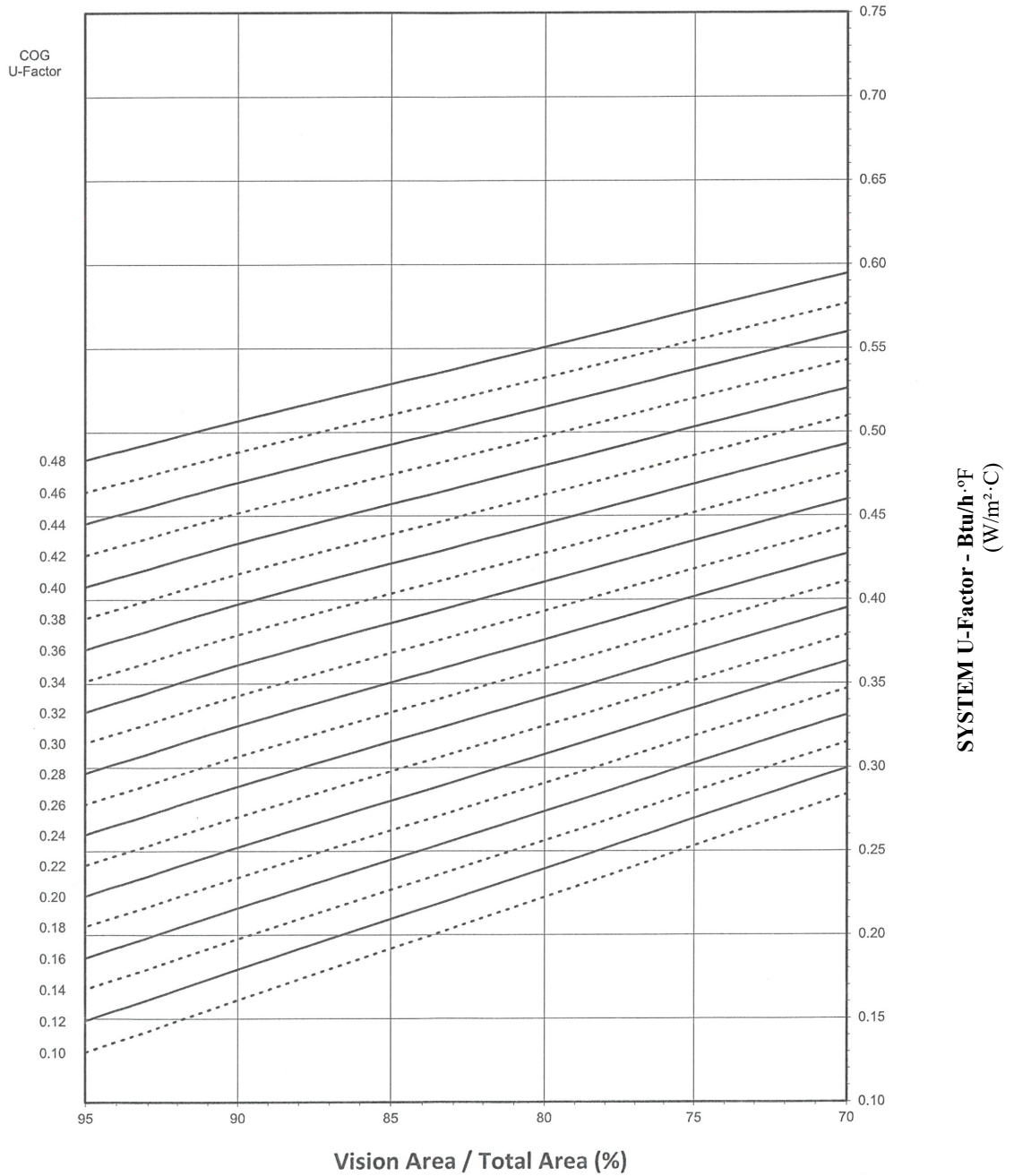
THERMTEK™ reserves the right to change configuration without prior notice when deemed necessary for product improvement.
™THERMTEK.COM

THERMAL CHARTS

**4 SIDED SSG
1" DOUBLE GLAZED - WARM EDGE GLASS SPACER**

Note:
 Values in parentheses are metric.
 COG = Center of glass.
 Charts are generated per AAMA 507

SYSTEM U-FACTOR vs PERCENT OF GLASS AREA



Laws and building and safety codes governing the design and use of glazed entrance, window, and curtain wall products vary widely. THERMTEK™ does not control the selection of product configurations, operating hardware, or glazing materials, and assumes no responsibility therefor.

THERMTEK™ reserves the right to change configuration without prior notice when deemed necessary for product improvement.

THERMTEK.COM

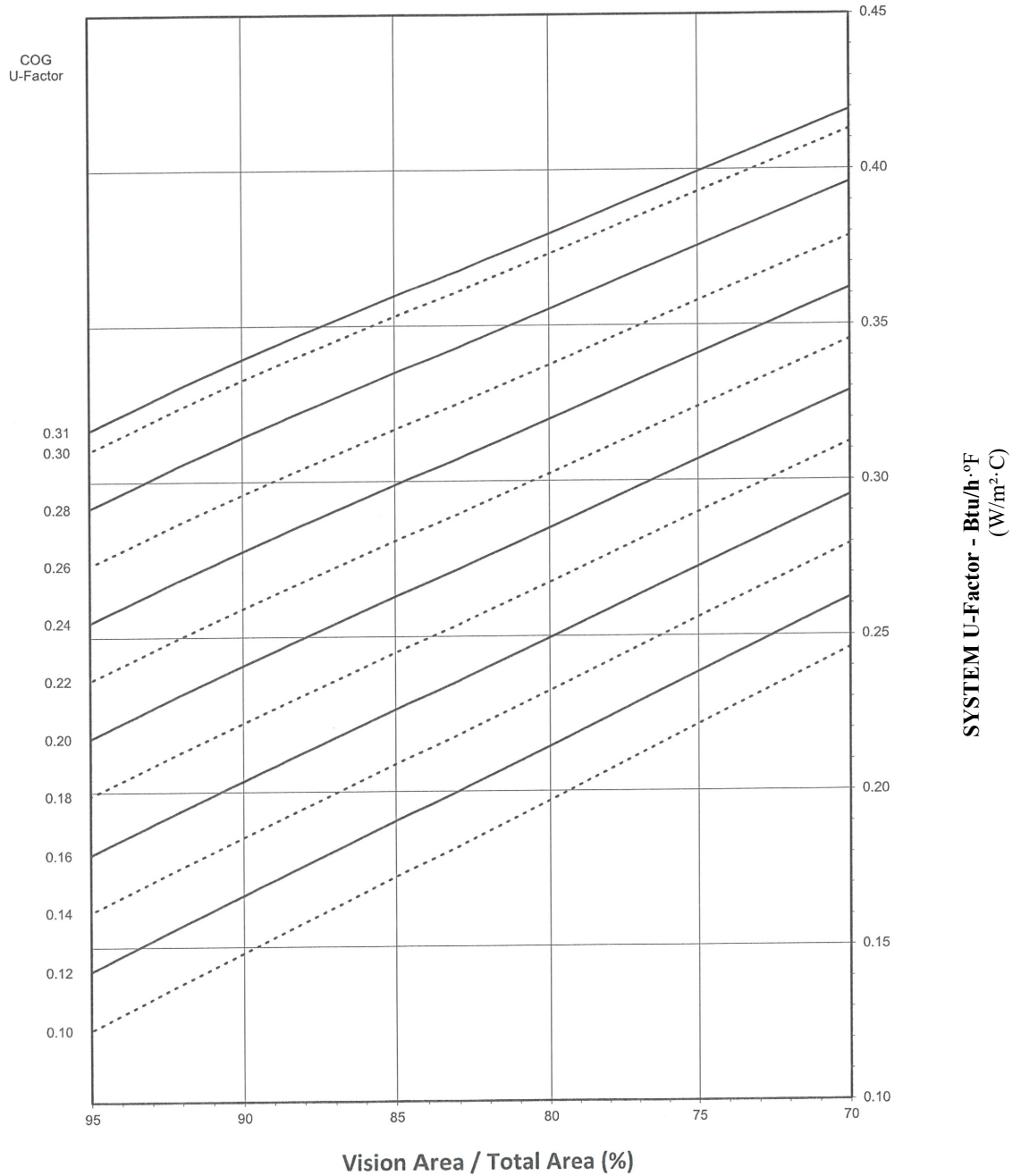
Notes for system U-factor, SHGC and VT charts:
 For glass values that are not listed, linear interpolation is permitted.
 Glass properties are based on center of glass values and are obtained from your glass supplier.

THERMAL CHARTS

**4 SIDED SSG
1 3/4" TRIPLE GLAZED - WARM EDGE GLASS SPACER**

Note:
Values in parentheses are metric.
COG = Center of glass.
Charts are generated per AAMA 507

SYSTEM U-FACTOR vs PERCENT OF GLASS AREA



Laws and building and safety codes governing the design and use of glazed entrance, window, and curtain wall products vary widely. THERMTEK™ does not control the selection of product configurations, operating hardware, or glazing materials, and assumes no responsibility therefor.

THERMTEK™ reserves the right to change configuration without prior notice when deemed necessary for product improvement.

THERMTEK.COM

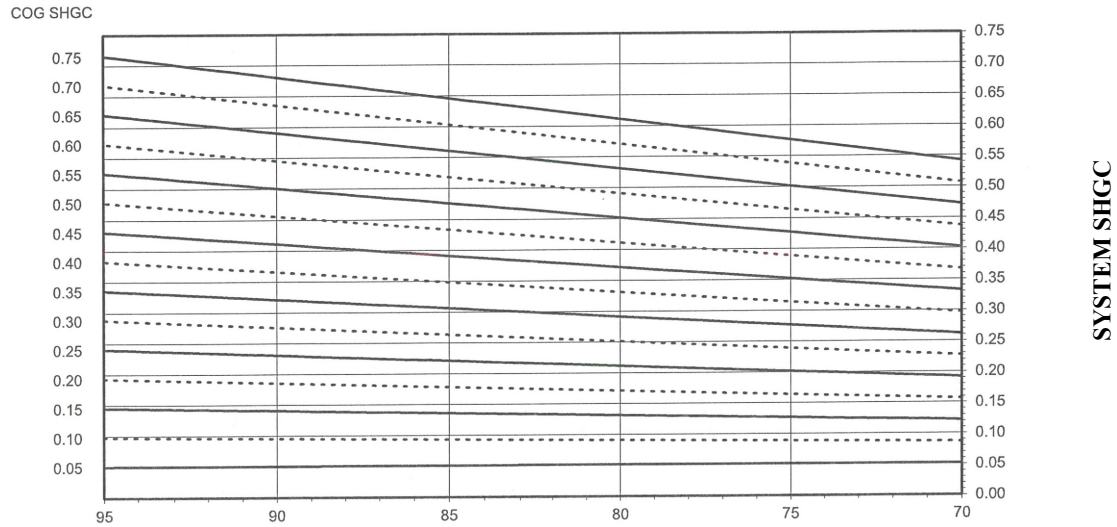
Notes for system U-factor, SHGC and VT charts:

For glass values that are not listed, linear interpolation is permitted.
Glass properties are based on center of glass values and are obtained from your glass supplier.

THERMAL CHARTS

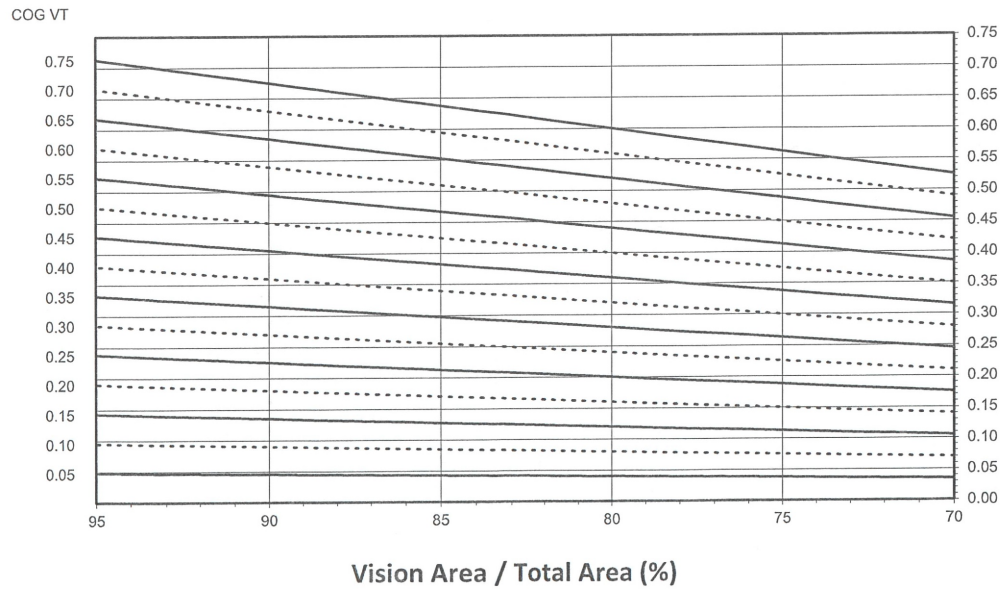
**4 SIDED SSG
1" DOUBLE GLAZED - WARM EDGE GLASS SPACER**

SYSTEM SOLAR HEAT GAIN COEFFICIENT (SHGC) vs. PERCENT OF VISION AREA



SYSTEM SHGC

SYSTEM VISIBLE TRANSMITTANCE (VT) vs. PERCENT OF VISION AREA



SYSTEM VT

CHARTS ARE GENERATED PER AAMA 507

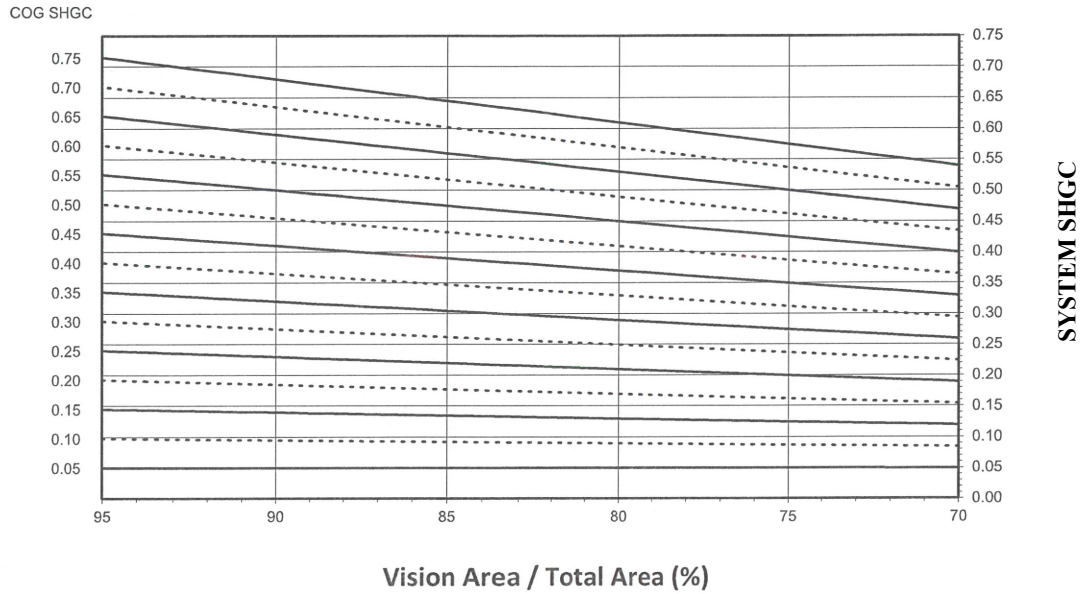
Laws and building and safety codes governing the design and use of glazed entrance, window, and curtain wall products vary widely. THERMTEK™ does not control the selection of product configurations, operating hardware, or glazing materials, and assumes no responsibility therefor.

THERMTEK™ reserves the right to change configuration without prior notice when deemed necessary for product improvement.
THERMTEK.COM

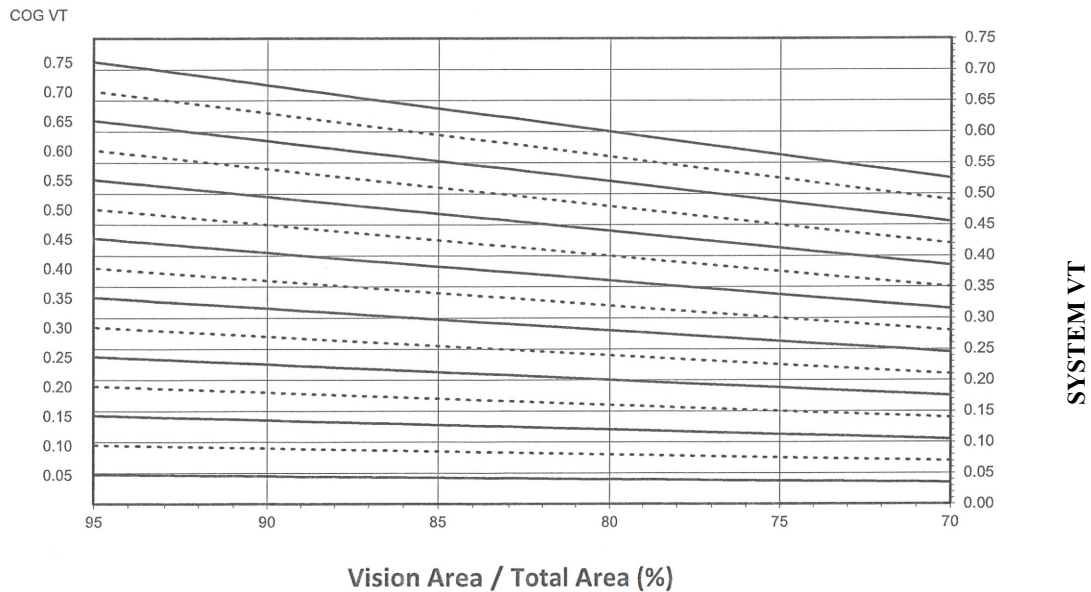
THERMAL CHARTS

4 SIDED SSG 1 3/4" TRIPLE GLAZED - WARM EDGE GLASS SPACER

SYSTEM SOLAR HEAT GAIN COEFFICIENT (SHGC) vs. PERCENT OF VISION AREA



SYSTEM VISIBLE TRANSMITTANCE (VT) vs. PERCENT OF VISION AREA



CHARTS ARE GENERATED PER AAMA 507

Laws and building and safety codes governing the design and use of glazed entrance, window, and curtain wall products vary widely. THERMTEK™ does not control the selection of product configurations, operating hardware, or glazing materials, and assumes no responsibility therefor.

THERMTEK™ reserves the right to change configuration without prior notice when deemed necessary for product improvement.
THERMTEK.COM

THERMAL TRANSMITTANCE¹ (BTU/hr • ft² • °F)

Glass U-Factor ³	Overall U-Factor ⁴
0.32	0.34
0.30	0.32
0.28	0.31
0.26	0.29
0.24	0.27
0.22	0.25
0.20	0.24
0.18	0.22
0.16	0.20
0.14	0.19
0.12	0.17
0.10	0.15

CAPTURED SYSTEM
 1" DOUBLE GLAZING
 WARM-EDGE GLAZING SPACER

NOTE: For glass values that are not listed, linear interpolation is permitted.

1. U-Factors are determined in accordance with NFRC 100.
2. SHGC and VT values are determined in accordance with NFRC 200.
3. Glass properties are based on center of glass values and are obtained from your glass supplier.
4. overall U-Factor, SHGC, and VT Matricies are based on the standard NFRC specimen size of 2,000 mm wide by 2,000 mm high (78-3/4" by 78-3/4").

SHGC MATRIX²

Glass SHGC ³	Overall SHGC ⁴
0.75	0.66
0.70	0.62
0.65	0.58
0.60	0.53
0.55	0.49
0.50	0.44
0.45	0.40
0.40	0.36
0.35	0.31
0.30	0.27
0.25	0.22
0.20	0.18
0.15	0.14
0.10	0.09
0.05	0.05

VISIBLE TRANSMITTANCE²

Glass SHGC ³	Overall SHGC ⁴
0.75	0.66
0.70	0.61
0.65	0.57
0.60	0.53
0.55	0.48
0.50	0.44
0.45	0.40
0.40	0.35
0.35	0.31
0.30	0.26
0.25	0.22
0.20	0.18
0.15	0.13
0.10	0.09
0.05	0.04

Laws and building and safety codes governing the design and use of glazed entrance, window, and curtain wall products vary widely. THERMTEK™ does not control the selection of product configurations, operating hardware, or glazing materials, and assumes no responsibility therefor.

THERMTEK™ reserves the right to change configuration without prior notice when deemed necessary for product improvement.
 THERMTEK.COM

THERMAL TRANSMITTANCE¹ (BTU/hr • ft² • °F)

Glass U-Factor ³	Overall U-Factor ⁴
0.31	0.32
0.30	0.31
0.28	0.29
0.26	0.27
0.24	0.26
0.22	0.24
0.20	0.22
0.18	0.21
0.16	0.19
0.14	0.17
0.12	0.15
0.10	0.14

CAPTURED SYSTEM

1 3/4" TRIPLE GLAZING
WARM-EDGE GLAZING SPACER

NOTE: For glass values that are not listed, linear interpolation is permitted.

1. U-Factors are determined in accordance with NFRC 100.
2. SHGC and VT values are determined in accordance with NFRC 200.
3. Glass properties are based on center of glass values and are obtained from your glass supplier.
4. overall U-Factor, SHGC, and VT Matrices are based on the standard NFRC specimen size of 2,000 mm wide by 2,000 mm high (78-3/4" by 78-3/4").

SHGC MATRIX²

Glass SHGC ³	Overall SHGC ⁴
0.75	0.66
0.70	0.62
0.65	0.57
0.60	0.53
0.55	0.49
0.50	0.44
0.45	0.40
0.40	0.35
0.35	0.31
0.30	0.27
0.25	0.22
0.20	0.18
0.15	0.14
0.10	0.09
0.05	0.05

VISIBLE TRANSMITTANCE²

Glass SHGC ³	Overall SHGC ⁴
0.75	0.66
0.70	0.61
0.65	0.57
0.60	0.53
0.55	0.48
0.50	0.44
0.45	0.39
0.40	0.35
0.35	0.31
0.30	0.26
0.25	0.22
0.20	0.18
0.15	0.13
0.10	0.09
0.05	0.04

Laws and building and safety codes governing the design and use of glazed entrance, window, and curtain wall products vary widely. THERMTEK™ does not control the selection of product configurations, operating hardware, or glazing materials, and assumes no responsibility therefor.

THERMTEK™ reserves the right to change configuration without prior notice when deemed necessary for product improvement.

™THERMTEK.COM

THERMTEK™ CURTAIN WALL SYSTEM (STICK)

THERMAL PERFORMANCE (DOUBLE GLAZED)

THERMAL TRANSMITTANCE¹ (BTU/hr • ft² • °F)

Glass U-Factor ³	Overall U-Factor ⁴
0.32	0.35
0.30	0.33
0.28	0.31
0.26	0.29
0.24	0.27
0.22	0.26
0.20	0.24
0.18	0.22
0.16	0.20
0.14	0.18
0.12	0.17
0.10	0.15

SSG VERTICAL SYSTEM

1" DOUBLE GLAZING
WARM-EDGE GLAZING SPACER

NOTE: For glass values that are not listed, linear interpolation is permitted.

1. U-Factors are determined in accordance with NFRC 100.
2. SHGC and VT values are determined in accordance with NFRC 200.
3. Glass properties are based on center of glass values and are obtained from your glass supplier.
4. overall U-Factor, SHGC, and VT Matricies are based on the standard NFRC specimen size of 2,000 mm wide by 2,000 mm high (78-3/4" by 78-3/4").

SHGC MATRIX²

Glass SHGC ³	Overall SHGC ⁴
0.75	0.67
0.70	0.62
0.65	0.58
0.60	0.53
0.55	0.49
0.50	0.45
0.45	0.40
0.40	0.36
0.35	0.31
0.30	0.27
0.25	0.23
0.20	0.18
0.15	0.14
0.10	0.09
0.05	0.05

VISIBLE TRANSMITTANCE²

Glass SHGC ³	Overall SHGC ⁴
0.75	0.66
0.70	0.62
0.65	0.58
0.60	0.53
0.55	0.49
0.50	0.44
0.45	0.40
0.40	0.35
0.35	0.31
0.30	0.27
0.25	0.22
0.20	0.18
0.15	0.13
0.10	0.09
0.05	0.04

Laws and building and safety codes governing the design and use of glazed entrance, window, and curtain wall products vary widely. THERMTEK™ does not control the selection of product configurations, operating hardware, or glazing materials, and assumes no responsibility therefor.

THERMTEK™ reserves the right to change configuration without prior notice when deemed necessary for product improvement.

™THERMTEK.COM

THERMAL TRANSMITTANCE¹ (BTU/hr • ft² • °F)

Glass U-Factor ³	Overall U-Factor ⁴
0.31	0.32
0.30	0.32
0.28	0.30
0.26	0.28
0.24	0.26
0.22	0.24
0.20	0.23
0.18	0.21
0.16	0.19
0.14	0.17
0.12	0.15
0.10	0.13

SSG VERTICAL SYSTEM

1 3/4" TRIPLE GLAZING
WARM-EDGE GLAZING SPACER

NOTE: For glass values that are not listed, linear interpolation is permitted.

1. U-Factors are determined in accordance with NFRC 100.
2. SHGC and VT values are determined in accordance with NFRC 200.
3. Glass properties are based on center of glass values and are obtained from your glass supplier.
4. overall U-Factor, SHGC, and VT Matricies are based on the standard NFRC specimen size of 2,000 mm wide by 2,000 mm high (78-3/4" by 78-3/4").

SHGC MATRIX²

Glass SHGC ³	Overall SHGC ⁴
0.75	0.67
0.70	0.62
0.65	0.58
0.60	0.53
0.55	0.49
0.50	0.45
0.45	0.40
0.40	0.36
0.35	0.31
0.30	0.27
0.25	0.22
0.20	0.18
0.15	0.14
0.10	0.09
0.05	0.05

VISIBLE TRANSMITTANCE²

Glass SHGC ³	Overall SHGC ⁴
0.75	0.66
0.70	0.62
0.65	0.58
0.60	0.53
0.55	0.49
0.50	0.44
0.45	0.40
0.40	0.35
0.35	0.31
0.30	0.27
0.25	0.22
0.20	0.18
0.15	0.13
0.10	0.09
0.05	0.04

Laws and building and safety codes governing the design and use of glazed entrance, window, and curtain wall products vary widely. THERMTEK™ does not control the selection of product configurations, operating hardware, or glazing materials, and assumes no responsibility therefor.

THERMTEK™ reserves the right to change configuration without prior notice when deemed necessary for product improvement.
THERMTEK.COM

THERMTEK™ CURTAIN WALL SYSTEM (STICK)

THERMAL PERFORMANCE (DOUBLE GLAZED)

THERMAL TRANSMITTANCE¹ (BTU/hr • ft² • °F)

Glass U-Factor ³	Overall U-Factor ⁴
0.32	0.36
0.30	0.34
0.28	0.33
0.26	0.31
0.24	0.29
0.22	0.28
0.20	0.26
0.18	0.24
0.16	0.22
0.14	0.21
0.12	0.19
0.10	0.17

SSG HORIZONTAL SYSTEM

1" DOUBLE GLAZING
WARM-EDGE GLAZING SPACER

NOTE: For glass values that are not listed, linear interpolation is permitted.

1. U-Factors are determined in accordance with NFRC 100.
2. SHGC and VT values are determined in accordance with NFRC 200.
3. Glass properties are based on center of glass values and are obtained from your glass supplier.
4. overall U-Factor, SHGC, and VT Matricies are based on the standard NFRC specimen size of 2,000 mm wide by 2,000 mm high (78-3/4" by 78-3/4").

SHGC MATRIX²

Glass SHGC ³	Overall SHGC ⁴
0.75	0.67
0.70	0.62
0.65	0.58
0.60	0.53
0.55	0.49
0.50	0.45
0.45	0.40
0.40	0.36
0.35	0.31
0.30	0.27
0.25	0.23
0.20	0.18
0.15	0.14
0.10	0.09
0.05	0.05

VISIBLE TRANSMITTANCE²

Glass SHGC ³	Overall SHGC ⁴
0.75	0.66
0.70	0.62
0.65	0.57
0.60	0.53
0.55	0.48
0.50	0.44
0.45	0.40
0.40	0.35
0.35	0.31
0.30	0.26
0.25	0.22
0.20	0.18
0.15	0.13
0.10	0.09
0.05	0.04

Laws and building and safety codes governing the design and use of glazed entrance, window, and curtain wall products vary widely. THERMTEK™ does not control the selection of product configurations, operating hardware, or glazing materials, and assumes no responsibility therefor.

THERMTEK™ reserves the right to change configuration without prior notice when deemed necessary for product improvement.

™THERMTEK.COM

THERMAL PERFORMANCE (TRIPLE GLAZED)

THERMAL TRANSMITTANCE¹ (BTU/hr • ft² • °F)

Glass U-Factor ³	Overall U-Factor ⁴
0.31	0.34
0.30	0.33
0.28	0.31
0.26	0.30
0.24	0.28
0.22	0.26
0.20	0.24
0.18	0.23
0.16	0.21
0.14	0.19
0.12	0.17
0.10	0.15

SSG HORIZONTAL SYSTEM

1 3/4" TRIPLE GLAZING
WARM-EDGE GLAZING SPACER

NOTE: For glass values that are not listed, linear interpolation is permitted.

1. U-Factors are determined in accordance with NFRC 100.
2. SHGC and VT values are determined in accordance with NFRC 200.
3. Glass properties are based on center of glass values and are obtained from your glass supplier.
4. overall U-Factor, SHGC, and VT Matricies are based on the standard NFRC specimen size of 2,000 mm wide by 2,000 mm high (78-3/4" by 78-3/4").

SHGC MATRIX²

Glass SHGC ³	Overall SHGC ⁴
0.75	0.67
0.70	0.62
0.65	0.58
0.60	0.53
0.55	0.49
0.50	0.44
0.45	0.40
0.40	0.36
0.35	0.31
0.30	0.27
0.25	0.22
0.20	0.18
0.15	0.14
0.10	0.09
0.05	0.05

VISIBLE TRANSMITTANCE²

Glass SHGC ³	Overall SHGC ⁴
0.75	0.66
0.70	0.62
0.65	0.57
0.60	0.53
0.55	0.48
0.50	0.44
0.45	0.40
0.40	0.35
0.35	0.31
0.30	0.26
0.25	0.22
0.20	0.18
0.15	0.13
0.10	0.09
0.05	0.04

Laws and building and safety codes governing the design and use of glazed entrance, window, and curtain wall products vary widely. THERMTEK™ does not control the selection of product configurations, operating hardware, or glazing materials, and assumes no responsibility therefor.

THERMTEK™ reserves the right to change configuration without prior notice when deemed necessary for product improvement.

™THERMTEK.COM

THERMTEK™ CURTAIN WALL SYSTEM (STICK)

THERMAL PERFORMANCE (DOUBLE GLAZED)

THERMAL TRANSMITTANCE¹ (BTU/hr • ft² • °F)

Glass U-Factor ³	Overall U-Factor ⁴
0.32	0.37
0.30	0.35
0.28	0.33
0.26	0.31
0.24	0.29
0.22	0.28
0.20	0.26
0.18	0.24
0.16	0.22
0.14	0.20
0.12	0.19
0.10	0.17

4 SIDED SSG SYSTEM

1" DOUBLE GLAZING
WARM-EDGE GLAZING SPACER

NOTE: For glass values that are not listed, linear interpolation is permitted.

1. U-Factors are determined in accordance with NFRC 100.
2. SHGC and VT values are determined in accordance with NFRC 200.
3. Glass properties are based on center of glass values and are obtained from your glass supplier.
4. overall U-Factor, SHGC, and VT Matricies are based on the standard NFRC specimen size of 2,000 mm wide by 2,000 mm high (78-3/4" by 78-3/4").

SHGC MATRIX²

Glass SHGC ³	Overall SHGC ⁴
0.75	0.67
0.70	0.63
0.65	0.58
0.60	0.54
0.55	0.49
0.50	0.45
0.45	0.41
0.40	0.36
0.35	0.32
0.30	0.27
0.25	0.23
0.20	0.18
0.15	0.14
0.10	0.10
0.05	0.05

VISIBLE TRANSMITTANCE²

Glass SHGC ³	Overall SHGC ⁴
0.75	0.67
0.70	0.62
0.65	0.58
0.60	0.53
0.55	0.49
0.50	0.44
0.45	0.40
0.40	0.36
0.35	0.31
0.30	0.27
0.25	0.22
0.20	0.18
0.15	0.13
0.10	0.09
0.05	0.04

Laws and building and safety codes governing the design and use of glazed entrance, window, and curtain wall products vary widely. THERMTEK™ does not control the selection of product configurations, operating hardware, or glazing materials, and assumes no responsibility therefor.

THERMTEK™ reserves the right to change configuration without prior notice when deemed necessary for product improvement.
™THERMTEK.COM

THERMAL PERFORMANCE (TRIPLE GLAZED)

THERMAL TRANSMITTANCE¹ (BTU/hr • ft² • °F)

Glass U-Factor ³	Overall U-Factor ⁴
0.31	0.34
0.30	0.34
0.28	0.32
0.26	0.30
0.24	0.28
0.22	0.26
0.20	0.25
0.18	0.23
0.16	0.21
0.14	0.19
0.12	0.17
0.10	0.15

4 SIDED SSG SYSTEM

1 3/4" TRIPLE GLAZING
WARM-EDGE GLAZING SPACER

NOTE: For glass values that are not listed, linear interpolation is permitted.

1. U-Factors are determined in accordance with NFRC 100.
2. SHGC and VT values are determined in accordance with NFRC 200.
3. Glass properties are based on center of glass values and are obtained from your glass supplier.
4. overall U-Factor, SHGC, and VT Matricies are based on the standard NFRC specimen size of 2,000 mm wide by 2,000 mm high (78-3/4" by 78-3/4").

SHGC MATRIX²

Glass SHGC ³	Overall SHGC ⁴
0.75	0.67
0.70	0.63
0.65	0.58
0.60	0.54
0.55	0.49
0.50	0.45
0.45	0.41
0.40	0.36
0.35	0.32
0.30	0.27
0.25	0.23
0.20	0.18
0.15	0.14
0.10	0.09
0.05	0.05

VISIBLE TRANSMITTANCE²

Glass SHGC ³	Overall SHGC ⁴
0.75	0.67
0.70	0.62
0.65	0.58
0.60	0.53
0.55	0.49
0.50	0.44
0.45	0.40
0.40	0.36
0.35	0.31
0.30	0.27
0.25	0.22
0.20	0.18
0.15	0.13
0.10	0.09
0.05	0.04

Laws and building and safety codes governing the design and use of glazed entrance, window, and curtain wall products vary widely. THERMTEK™ does not control the selection of product configurations, operating hardware, or glazing materials, and assumes no responsibility therefor.

THERMTEK™ reserves the right to change configuration without prior notice when deemed necessary for product improvement.

™THERMTEK.COM